

PCDH18 Antibody

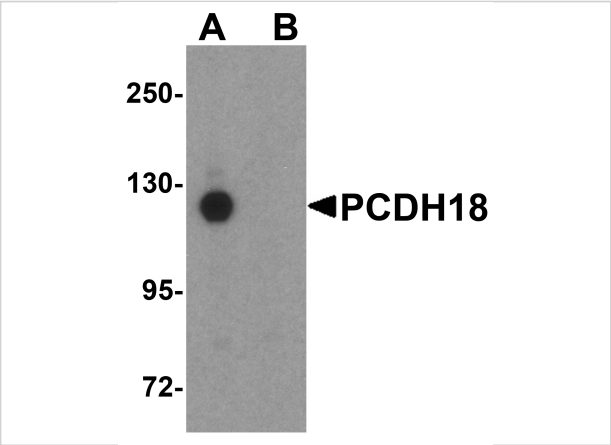
CATALOG NUMBER: 5081

Specifications

Host Species	Rabbit
Species Reactivity	Human, Mouse, Rat
Homology	Predicted species reactivity based on immunogen sequence: Bovine: (95%)
Immunogen	PCDH18 antibody was raised against a 17 amino acid synthetic peptide near the amino terminus of human PCDH18. The immunogen is located within amino acids 50 - 100 of PCDH18.
Conjugate	Unconjugated
Tested Applications	ELISA, IF, IHC-P, WB
User Note	Optimal dilutions for each application to be determined by the researcher.
Specificity	At least three isoforms of PCDH18 are known to exist. This antibody is predicted to not cross-react with PCDH12.

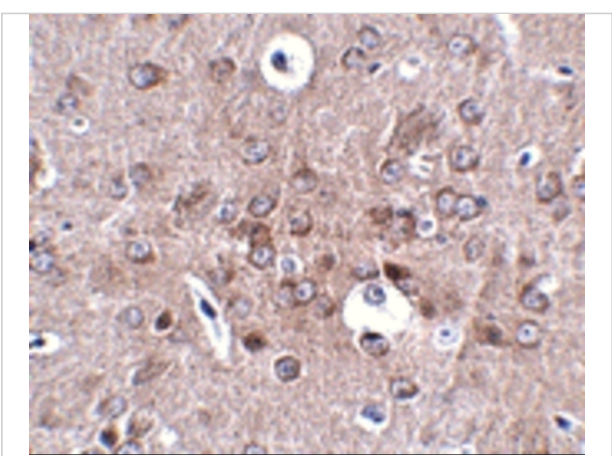
Properties

Purification	PCDH18 Antibody is affinity chromatography purified via peptide column.
Clonality	Polyclonal
Isotype	IgG
Physical State	Liquid
Buffer	PCDH18 Antibody is supplied in PBS containing 0.02% sodium azide.
Concentration	1 mg/mL
Storage Conditions	PCDH18 antibody can be stored at 4°C for three months and -20°C, stable for up to one year. As with all antibodies care should be taken to avoid repeated freeze thaw cycles. Antibodies should not be exposed to prolonged high temperatures.



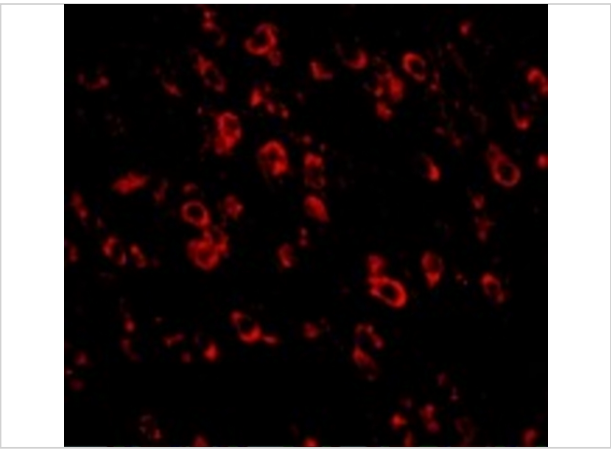
PCDH18 Antibody 1

Western blot analysis of PCDH18 in HepG2 cell lysate with PCDH18 antibody at 1 µg/mL in (A) the absence and (B) the presence of blocking peptide.



PCDH18 Antibody 2

Immunohistochemistry of PCDH18 in mouse brain tissue with PCDH18 antibody at 2.5 µg/mL.



PCDH18 Antibody 3

Immunofluorescence of PCDH18 in Mouse Brain cells with PCDH18 antibody at 20 µg/mL.

Disclaimer

Disclaimer	Optimal dilutions/concentrations should be determined by the end user. The information provided is a guideline for product use. This product is for research use only.
------------	--

For research use only. For additional information, visit ProSci's [Terms and Conditions Page](#).