

LRFN4 Antibody

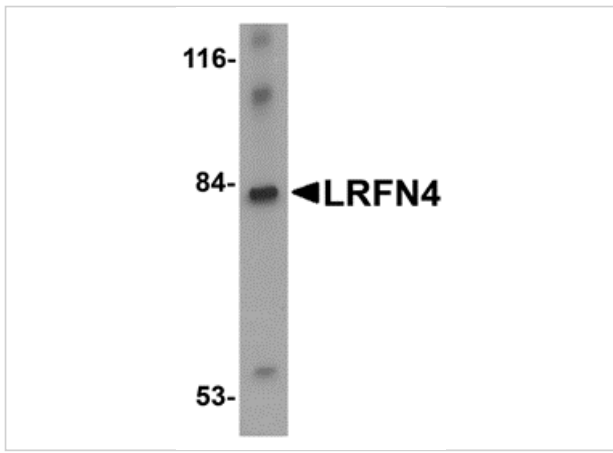
CATALOG NUMBER: 5077

Specifications

Host Species	Rabbit
Species Reactivity	Human, Mouse, Rat
Immunogen	LRFN4 antibody was raised against a 14amino acid synthetic peptide near the carboxy terminus of human LRFN4. The immunogen is located within amino acids 550 - 600 of LRFN4.
Conjugate	Unconjugated
Tested Applications	ELISA, IF, IHC-P, WB
User Note	Optimal dilutions for each application to be determined by the researcher.
Specificity	This antibody is predicted to not cross-react with other members of the LRFN family.

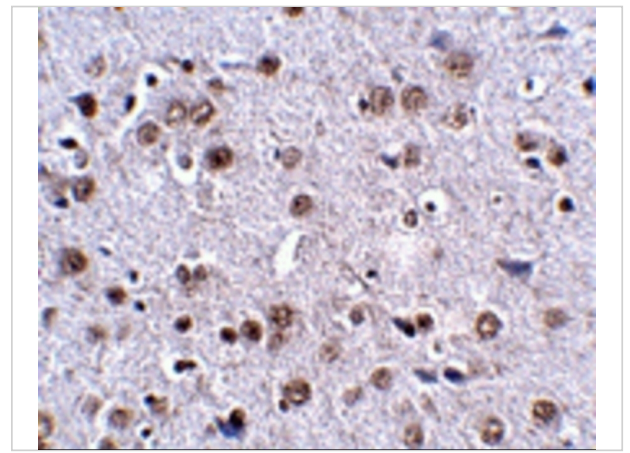
Properties

Purification	LRFN4 Antibody is affinity chromatography purified via peptide column.
Clonality	Polyclonal
Isotype	IgG
Physical State	Liquid
Buffer	LRFN4 Antibody is supplied in PBS containing 0.02% sodium azide.
Concentration	1 mg/mL
Storage Conditions	LRFN4 antibody can be stored at 4°C for three months and -20°C, stable for up to one year. As with all antibodies care should be taken to avoid repeated freeze thaw cycles. Antibodies should not be exposed to prolonged high temperatures.



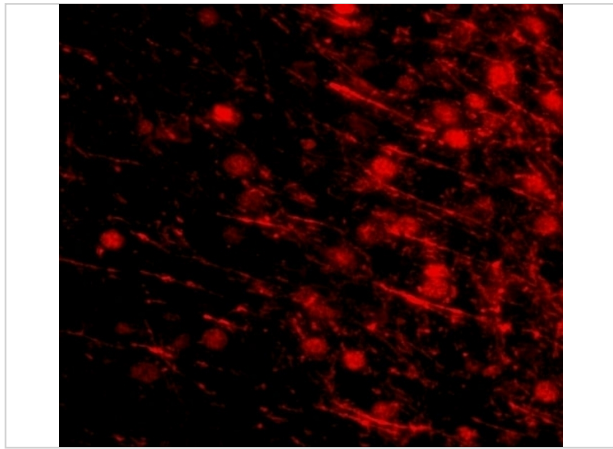
LRFN4 Antibody 1

Western blot analysis of LRFN4 in rat brain lysate with LRFN4 antibody at 1 µg/mL.



LRFN4 Antibody 2

Immunohistochemistry of LRFN4 in mouse brain tissue with LRFN4 antibody at 2.5 µg/mL.



LRFN4 Antibody 3

Immunofluorescence of LRFN4 in mouse brain tissue with LRFN4 antibody at 20 µg/mL.

Disclaimer

Disclaimer	Optimal dilutions/concentrations should be determined by the end user. The information provided is a guideline for product use. This product is for research use only.
-------------------	--

For research use only. For additional information, visit ProSci's [Terms and Conditions Page](#).