

PCDH12 Antibody

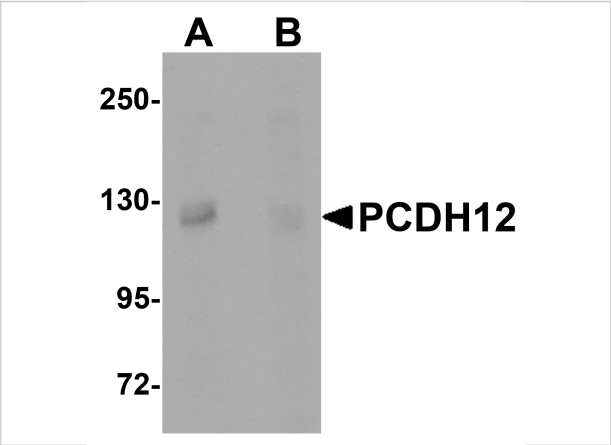
CATALOG NUMBER: 5071

Specifications

Host Species	Rabbit
Species Reactivity	Human, Mouse, Rat
Immunogen	PCDH12 antibody was raised against a 17 amino acid synthetic peptide near the amino terminus of human PCDH12. The immunogen is located within amino acids 30 - 80 of PCDH12.
Conjugate	Unconjugated
Tested Applications	ELISA, IHC-P, WB
User Note	Optimal dilutions for each application to be determined by the researcher.
Specificity	This antibody is predicted to not cross-react with PCDH18.
Predicted Molecular Weight	Predicted: 128 kDa Observed: 125 kDa

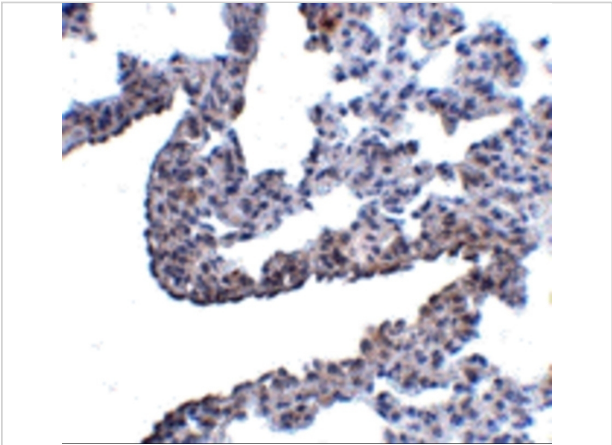
Properties

Purification	PCDH12 Antibody is affinity chromatography purified via peptide column.
Clonality	Polyclonal
Isotype	IgG
Physical State	Liquid
Buffer	PCDH12 Antibody is supplied in PBS containing 0.02% sodium azide.
Concentration	1 mg/mL
Storage Conditions	PCDH12 antibody can be stored at 4°C for three months and -20°C, stable for up to one year. As with all antibodies care should be taken to avoid repeated freeze thaw cycles. Antibodies should not be exposed to prolonged high temperatures.



PCDH12 Antibody 1

Western blot analysis of PCDH12 in K562 cell lysate with PCDH12 antibody at 1 µg/mL in (A) the absence and (B) the presence of blocking peptide.



PCDH12 Antibody 2

Immunohistochemistry of PCDH12 in rat lung tissue with PCDH12 antibody at 5 µg/mL.

Disclaimer

Disclaimer	Optimal dilutions/concentrations should be determined by the end user. The information provided is a guideline for product use. This product is for research use only.
------------	--

For research use only. For additional information, visit ProSci's [Terms and Conditions Page](#).