

RCAN2 Antibody

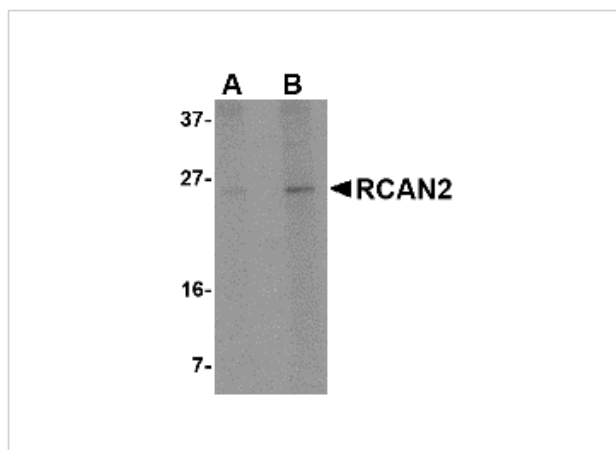
CATALOG NUMBER: 5051

Specifications

Host Species	Rabbit
Species Reactivity	Human, Mouse, Rat
Homology	Predicted species reactivity based on immunogen sequence: Bovine: (100%)
Immunogen	RCAN2 antibody was raised against a 14 amino acid synthetic peptide near the center of human RCAN2. The immunogen is located within amino acids 70 - 120 of RCAN2.
Conjugate	Unconjugated
Tested Applications	ELISA, IF, IHC-P, WB
User Note	Optimal dilutions for each application to be determined by the researcher.

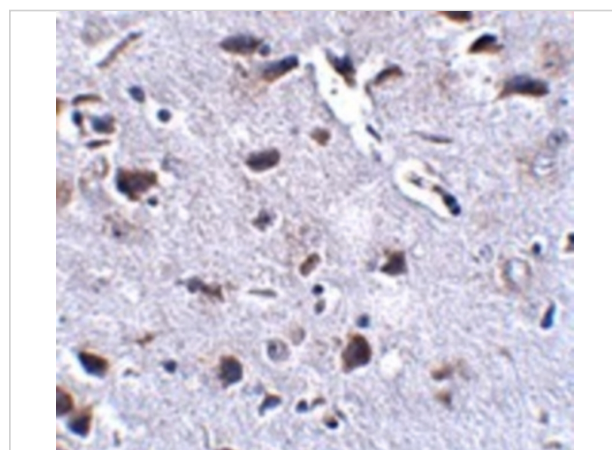
Properties

Purification	RCAN2 Antibody is affinity chromatography purified via peptide column.
Clonality	Polyclonal
Isotype	IgG
Physical State	Liquid
Buffer	RCAN2 Antibody is supplied in PBS containing 0.02% sodium azide.
Concentration	1 mg/mL
Storage Conditions	RCAN2 antibody can be stored at 4°C for three months and -20°C, stable for up to one year. As with all antibodies care should be taken to avoid repeated freeze thaw cycles. Antibodies should not be exposed to prolonged high temperatures.



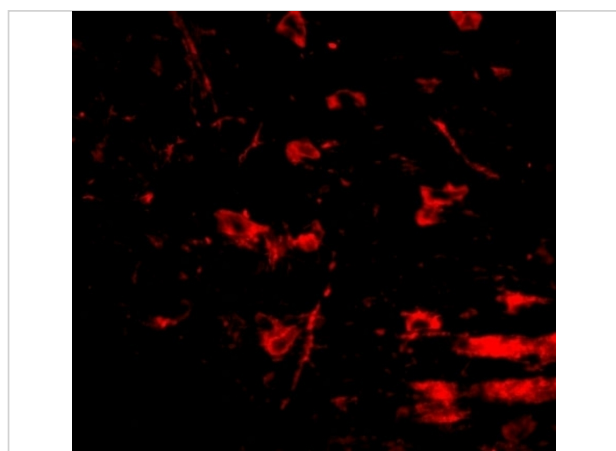
RCAN2 Antibody 1

Western blot analysis of RCAN2 in 3T3 cell lysate with RCAN2 antibody at (A) 1 and (B) 2 $\mu\text{g/mL}$.



RCAN2 Antibody 2

Immunohistochemistry of RCAN2 in mouse brain tissue with RCAN2 antibody at 2.5 $\mu\text{g/mL}$.



RCAN2 Antibody 3

Immunofluorescence of RCAN2 in mouse brain tissue with RCAN2 antibody at 20 $\mu\text{g/mL}$.

Disclaimer

Disclaimer

Optimal dilutions/concentrations should be determined by the end user. The information provided is a guideline for product use. This product is for research use only.

For research use only. For additional information, visit ProSci's [Terms and Conditions Page](#).