

PDCD5 Antibody

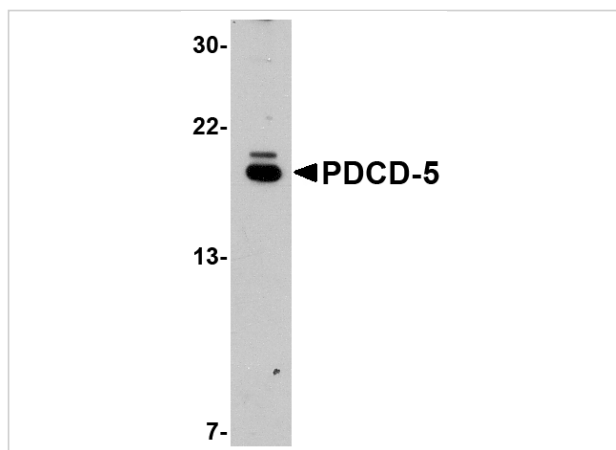
CATALOG NUMBER: 5011

Specifications

Host Species	Rabbit
Species Reactivity	Human, Mouse, Rat
Homology	Predicted species reactivity based on immunogen sequence: Bovine: (100%)
Immunogen	PDCD5 antibody was raised against a 21 amino acid synthetic peptide from near the carboxy terminus of human PDCD5. The immunogen is located within the last 50 amino acids of PDCD5.
Conjugate	Unconjugated
Tested Applications	ELISA, ICC, IF, WB
User Note	Optimal dilutions for each application to be determined by the researcher.

Properties

Purification	PDCD5 Antibody is affinity chromatography purified via peptide column.
Clonality	Polyclonal
Isotype	IgG
Physical State	Liquid
Buffer	PDCD5 Antibody is supplied in PBS containing 0.02% sodium azide.
Concentration	1 mg/mL
Storage Conditions	PDCD5 antibody can be stored at 4°C for three months and -20°C, stable for up to one year. As with all antibodies care should be taken to avoid repeated freeze thaw cycles. Antibodies should not be exposed to prolonged high temperatures.



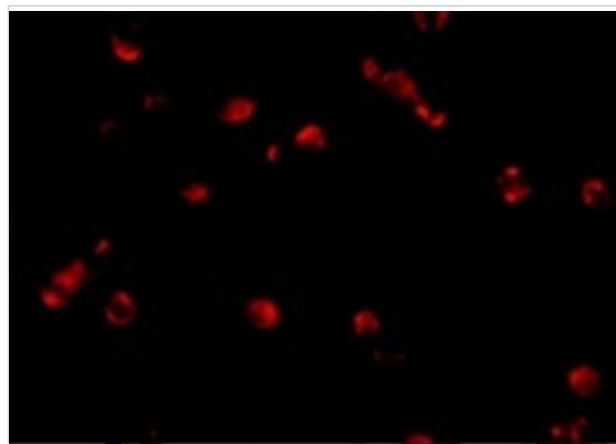
PDCD5 Antibody 1

Western blot analysis of PDCD5 in EL4 cell lysate with PDCD5 antibody at 1 µg/mL.



PDCD5 Antibody 2

Immunocytochemistry of PDCD5 in Jurkat cells with PDCD5 antibody at 2 µg/mL.



PDCD5 Antibody 3

Immunofluorescence of PDCD5 in Jurkat cells with PDCD5 antibody at 10 µg/mL.

Disclaimer

Disclaimer

Optimal dilutions/concentrations should be determined by the end user. The information provided is a guideline for product use. This product is for research use only.

For research use only. For additional information, visit ProSci's [Terms and Conditions Page](#).