

CRMP1 Antibody

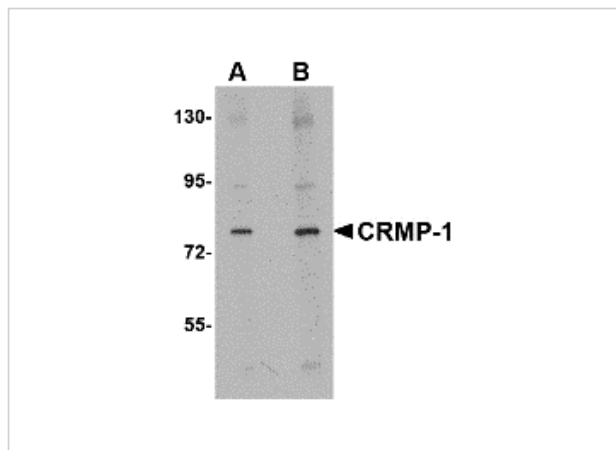
CATALOG NUMBER: 4983

Specifications

| | |
|---------------------|--|
| Host Species | Rabbit |
| Species Reactivity | Human, Mouse, Rat |
| Immunogen | CRMP1 antibody was raised against a 18 amino acid synthetic peptide from near the amino terminus of human CRMP1. The immunogen is located within amino acids 90 - 140 of CRMP1. |
| Conjugate | Unconjugated |
| Tested Applications | ELISA, IF, IHC-P, WB |
| User Note | Optimal dilutions for each application to be determined by the researcher. |
| Specificity | This antibody is expected to recognize only the longest isoform of CRMP-1. |

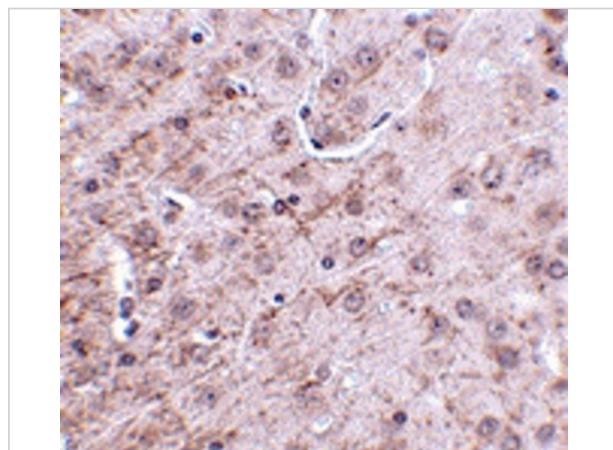
Properties

| | |
|--------------------|---|
| Purification | CRMP1 Antibody is affinity chromatography purified via peptide column. |
| Clonality | Polyclonal |
| Isotype | IgG |
| Physical State | Liquid |
| Buffer | CRMP1 Antibody is supplied in PBS containing 0.02% sodium azide. |
| Concentration | 1 mg/mL |
| Storage Conditions | CRMP1 antibody can be stored at 4°C for three months and -20°C, stable for up to one year. As with all antibodies care should be taken to avoid repeated freeze thaw cycles. Antibodies should not be exposed to prolonged high temperatures. |



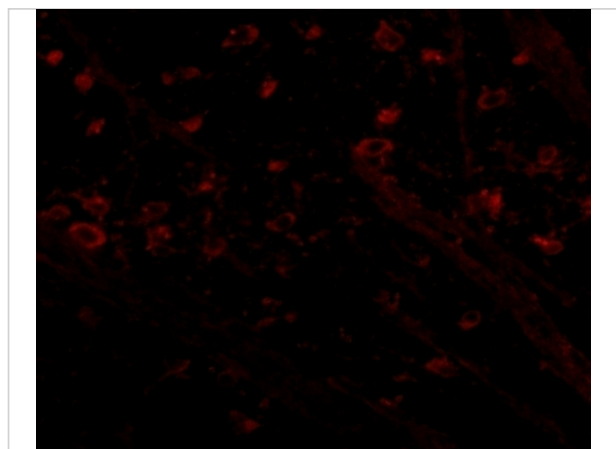
CRMP1 Antibody 1

Western blot analysis of CRMP1 in rat brain tissue lysate with CRMP1 antibody at (A) 1 and (B) 2 $\mu\text{g/mL}$.



CRMP1 Antibody 2

Immunohistochemistry of CRMP-1 in mouse brain tissue with CRMP-1 antibody at 2.5 $\mu\text{g/mL}$.



CRMP1 Antibody 3

Immunofluorescence of CRMP1 in mouse brain tissue with CRMP1 antibody at 5 $\mu\text{g/mL}$.

Disclaimer

Disclaimer

Optimal dilutions/concentrations should be determined by the end user. The information provided is a guideline for product use. This product is for research use only.

For research use only. For additional information, visit ProSci's [Terms and Conditions Page](#).