

TREX1 Antibody

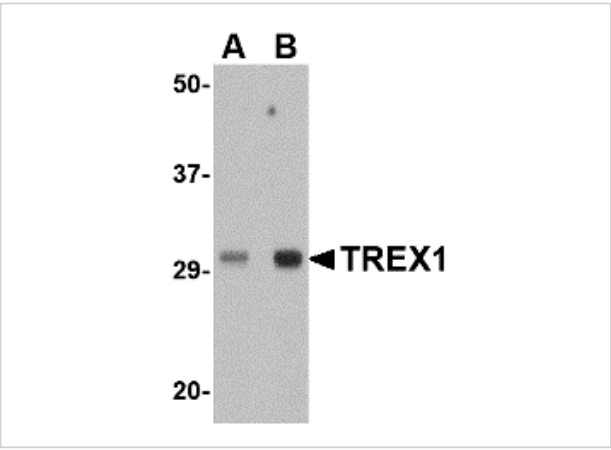
CATALOG NUMBER: 4969

Specifications

Host Species	Rabbit
Species Reactivity	Human, Mouse, Rat
Homology	Predicted species reactivity based on immunogen sequence: Bovine: (92%)
Immunogen	TREX1 antibody was raised against a 15 amino acid synthetic peptide near the center of human TREX1. The immunogen is located within amino acids 220 - 270 of TREX1.
Conjugate	Unconjugated
Tested Applications	ELISA, IF, IHC-P, WB
User Note	Optimal dilutions for each application to be determined by the researcher.
Specificity	TREX1 antibody will not cross-react with the related protein TREX2. At least three isoforms of TREX1 are known to exist; this antibody will recognize all three isoforms.
Predicted Molecular Weight	Predicted: 33, 35, 41 kDa Observed: 31 kDa

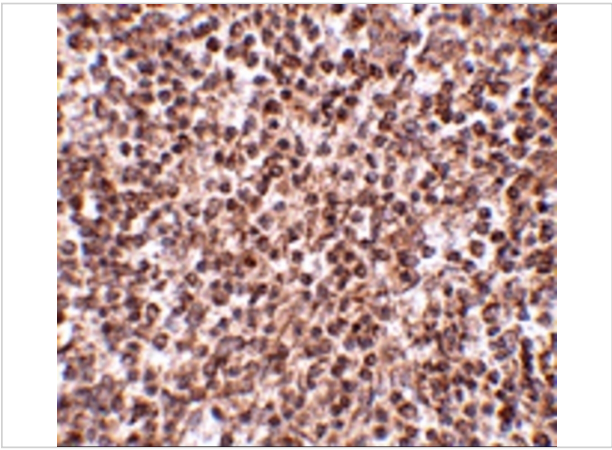
Properties

Purification	TREX1 Antibody is affinity chromatography purified via peptide column.
Clonality	Polyclonal
Isotype	IgG
Physical State	Liquid
Buffer	TREX1 Antibody is supplied in PBS containing 0.02% sodium azide.
Concentration	1 mg/mL
Storage Conditions	TREX1 antibody can be stored at 4°C for three months and -20°C, stable for up to one year. As with all antibodies care should be taken to avoid repeated freeze thaw cycles. Antibodies should not be exposed to prolonged high temperatures.



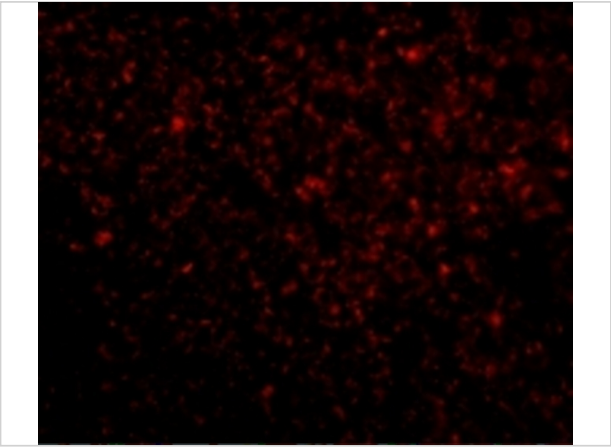
TREX1 Antibody 1

Western blot analysis of TREX1 in human spleen tissue lysate with TREX1 antibody at (A) 0.5 and (B) 1 µg/mL.



TREX1 Antibody 2

Immunohistochemistry of TREX1 in human spleen tissue with TREX1 antibody at 2.5 µg/mL.



TREX1 Antibody 3

Immunofluorescence of TREX1 in Human Spleen tissue with TREX1 antibody at 20 µg/mL.

Disclaimer

Disclaimer	Optimal dilutions/concentrations should be determined by the end user. The information provided is a guideline for product use. This product is for research use only.
------------	------------------------------------------------------------------------------------------------------------------------------------------------------------------------

For research use only. For additional information, visit ProSci's [Terms and Conditions Page](#).