

EBI3 Antibody

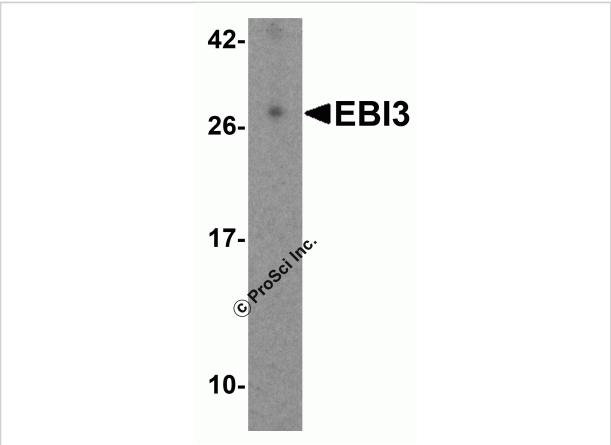
CATALOG NUMBER: 4967

Specifications

Host Species	Rabbit
Species Reactivity	Human
Homology	Predicted species reactivity based on immunogen sequence: Mouse: (46.7%), Rat: (46.7%)
Immunogen	Anti-EBI-3 antibody (4967) was raised against a peptide corresponding to 16 amino acids near the carboxy terminus of mature human EBI-3. The immunogen is located within the last 50 amino acids of EBI3.
Conjugate	Unconjugated
Tested Applications	ELISA, IF, IHC-P, WB
User Note	Optimal dilutions for each application to be determined by the researcher.
Predicted Molecular Weight	Predicted: 25kD Observed: 30 kD (25kD + 2 N-Glycosylations)

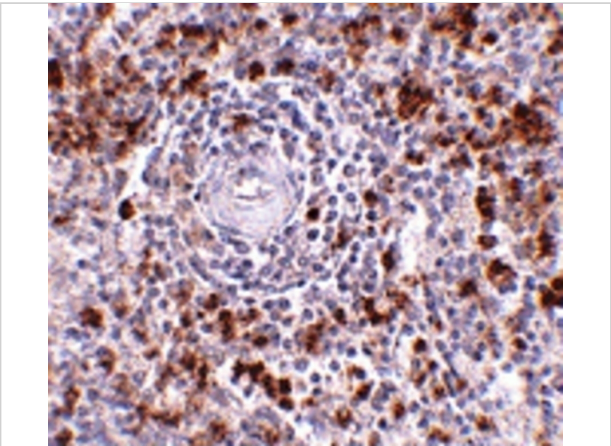
Properties

Purification	EBI3 Antibody is affinity chromatography purified via peptide column.
Clonality	Polyclonal
Isotype	IgG
Physical State	Liquid
Buffer	EBI3 Antibody is supplied in PBS containing 0.02% sodium azide.
Concentration	1 mg/mL
Storage Conditions	EBI3 antibody can be stored at 4°C for three months and -20°C, stable for up to one year. As with all antibodies care should be taken to avoid repeated freeze thaw cycles. Antibodies should not be exposed to prolonged high temperatures.



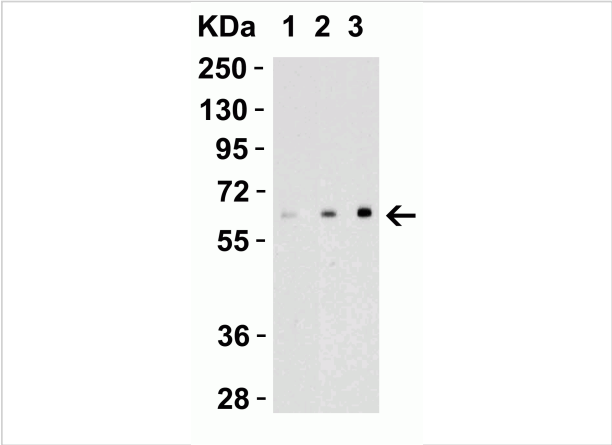
EBI3 Antibody 1

Figure 1 Western Blot Validation in Human Tonsil Tissue
Loading: 15 µg of lysates per lane. Antibodies: EBI-3 4967 (2 µg/mL), 1h incubation at RT in 5% NFDm/TBST. Secondary: Goat ...



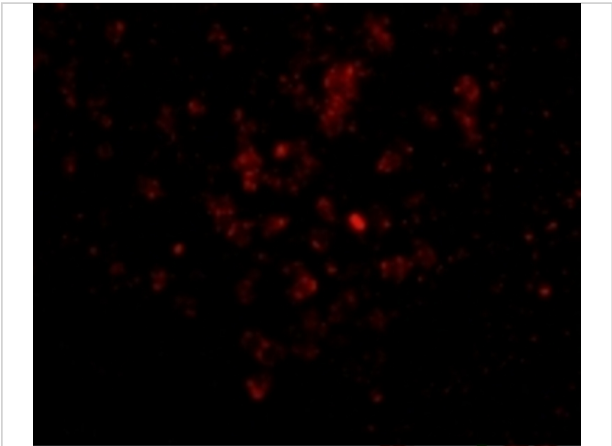
EBI3 Antibody 3

Figure 3 Immunohistochemistry Validation of EBI-3 in Human Spleen Tissue
Immunohistochemical analysis of paraffin-embedded Human Spleen tissue using anti-EBI-3 antibody (4967)...



EBI3 Antibody 2

Figure 2 Recombinant Protein Validation
Loading: 30 ng of human recombinant IL-17 (IL-17A+IL-17B) protein per lane. Antibodies: EBI-3 4967, 1h incubation at RT in 5% NFDm/TBST.S...



EBI3 Antibody 4

Figure 4 Immunofluorescence Validation of EBI-3 in Human Spleen Tissue
Immunofluorescent analysis of 4% paraformaldehyde-fixed Human Spleen tissue labeling EBI-3 with 4967 at 20...

Disclaimer

Disclaimer	Optimal dilutions/concentrations should be determined by the end user. The information provided is a guideline for product use. This product is for research use only.
------------	--

For research use only. For additional information, visit ProSci's [Terms and Conditions Page](#).