

PIG-Y Antibody

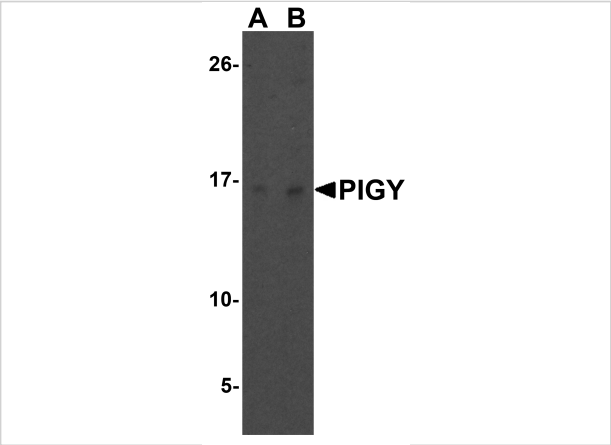
CATALOG NUMBER: 4955

Specifications

Host Species	Rabbit
Species Reactivity	Human, Mouse
Homology	Predicted species reactivity based on immunogen sequence: Bovine: (100%), Rat: (94%)
Immunogen	PIG-Y antibody was raised against a 16 amino acid synthetic peptide near the center of human PIG-Y. The immunogen is located within amino acids 50 - 100 of PIG-Y.
Conjugate	Unconjugated
Tested Applications	ELISA, IF, IHC-P, WB
User Note	Optimal dilutions for each application to be determined by the researcher.
Specificity	This antibody only detects isoform 1 of PIG-Y.
Predicted Molecular Weight	Predicted: 8 kDa Observed: 16 kDa

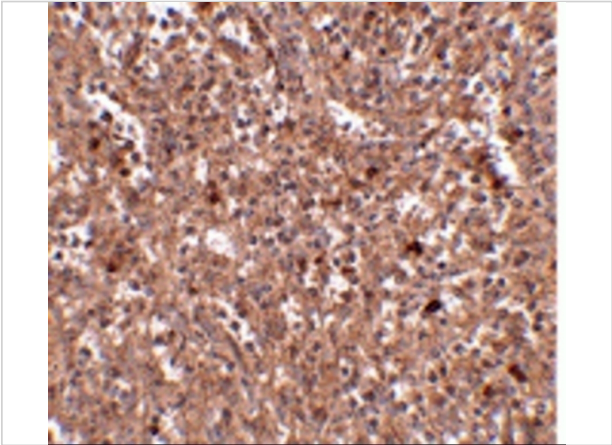
Properties

Purification	PIG-Y Antibody is affinity chromatography purified via peptide column.
Clonality	Polyclonal
Isotype	IgG
Physical State	Liquid
Buffer	PIG-Y Antibody is supplied in PBS containing 0.02% sodium azide.
Concentration	1 mg/mL
Storage Conditions	PIG-Y antibody can be stored at 4°C for three months and -20°C, stable for up to one year. As with all antibodies care should be taken to avoid repeated freeze thaw cycles. Antibodies should not be exposed to prolonged high temperatures.



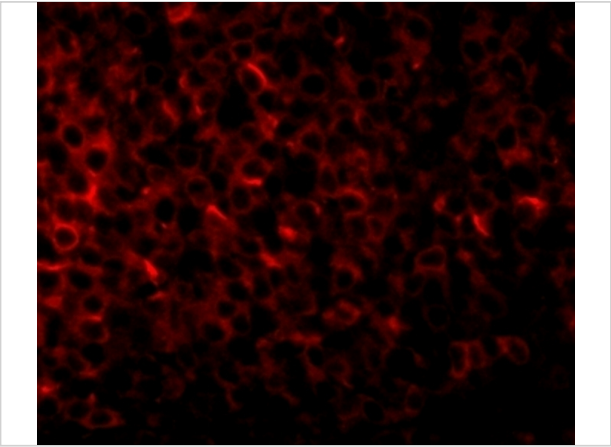
PIG-Y Antibody 1

Western blot analysis of PIG-Y in human liver tissue lysate with PIG-Y antibody at (A) 1 and (B) 2 µg/mL.



PIG-Y Antibody 2

Immunohistochemistry of PIG-Y in human spleen tissue with PIG-Y antibody at 2.5 µg/mL.



PIG-Y Antibody 3

Immunofluorescence of PIGY in human spleen tissue with PIGY1 antibody at 20 µg/mL.

Disclaimer

Disclaimer	Optimal dilutions/concentrations should be determined by the end user. The information provided is a guideline for product use. This product is for research use only.
------------	--

For research use only. For additional information, visit ProSci's [Terms and Conditions Page](#).