

NIPSNAP2 Antibody

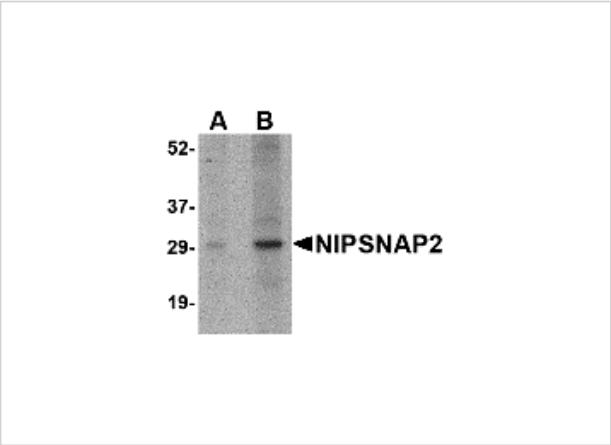
CATALOG NUMBER: 4953

Specifications

Host Species	Rabbit
Species Reactivity	Human, Mouse, Rat
Immunogen	NIPSNAP2 antibody was raised against a 14 amino acid synthetic peptide near the center of human NIPSNAP2. The immunogen is located within the first 50 amino acids of NIPSNAP2.
Conjugate	Unconjugated
Tested Applications	ELISA, IHC-P, WB
User Note	Optimal dilutions for each application to be determined by the researcher.

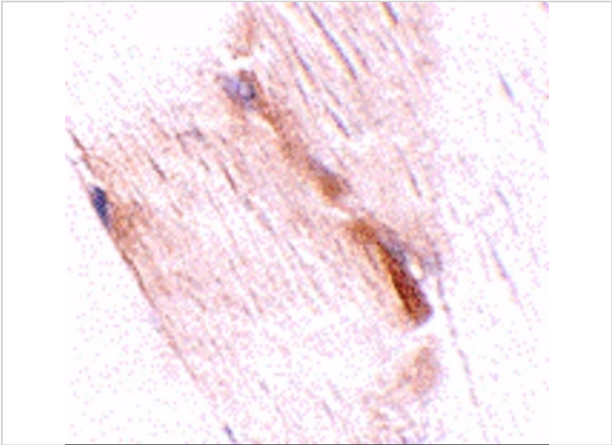
Properties

Purification	NIPSNAP2 Antibody is affinity chromatography purified via peptide column.
Clonality	Polyclonal
Isotype	IgG
Physical State	Liquid
Buffer	NIPSNAP2 Antibody is supplied in PBS containing 0.02% sodium azide.
Concentration	1 mg/mL
Storage Conditions	NIPSNAP2 antibody can be stored at 4°C for three months and -20°C, stable for up to one year. As with all antibodies care should be taken to avoid repeated freeze thaw cycles. Antibodies should not be exposed to prolonged high temperatures.



NIPSNAP2 Antibody 1

Western blot analysis of NIPSNAP2 in human skeletal muscle tissue lysate with NIPSNAP2 antibody at (A) 1 and (B) 2 µg/mL.



NIPSNAP2 Antibody 2

Immunohistochemistry of NIPSNAP2 in mouse skeletal muscle tissue with NIPSNAP2 antibody at 2.5 µg/mL.

Disclaimer

Disclaimer	Optimal dilutions/concentrations should be determined by the end user. The information provided is a guideline for product use. This product is for research use only.
------------	--

For research use only. For additional information, visit ProSci's [Terms and Conditions Page](#).