

TOM70 Antibody

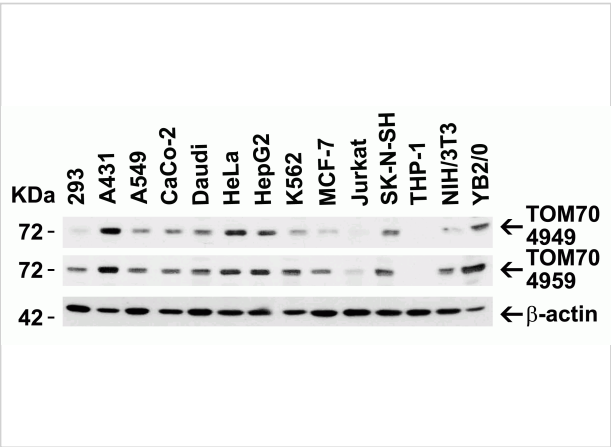
CATALOG NUMBER: 4949

Specifications

Host Species	Rabbit
Species Reactivity	Human, Mouse, Rat
Immunogen	Anti-TOM70 antibody (4949) was raised against a peptide corresponding to 17 amino acids near the amino terminus of human TOM70. The immunogen is located within amino acids 50-100 of TOM70.
Conjugate	Unconjugated
Tested Applications	ELISA, IF, IHC-P, WB
User Note	Optimal dilutions for each application to be determined by the researcher.
Specificity	At least two isoforms of TOM70 are known to exist; this antibody will only detect the larger isoform.
Predicted Molecular Weight	Predicted: 68kD Observed: 72 kD

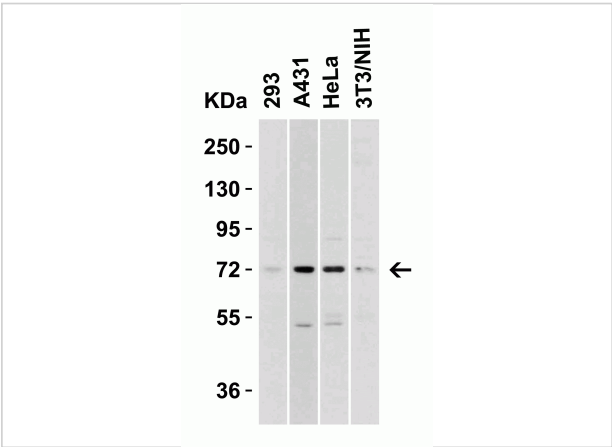
Properties

Purification	TOM70 Antibody is affinity chromatography purified via peptide column.
Clonality	Polyclonal
Isotype	IgG
Physical State	Liquid
Buffer	TOM70 Antibody is supplied in PBS containing 0.02% sodium azide.
Concentration	1 mg/mL
Storage Conditions	TOM70 antibody can be stored at 4°C for three months and -20°C, stable for up to one year. As with all antibodies care should be taken to avoid repeated freeze thaw cycles. Antibodies should not be exposed to prolonged high temperatures.



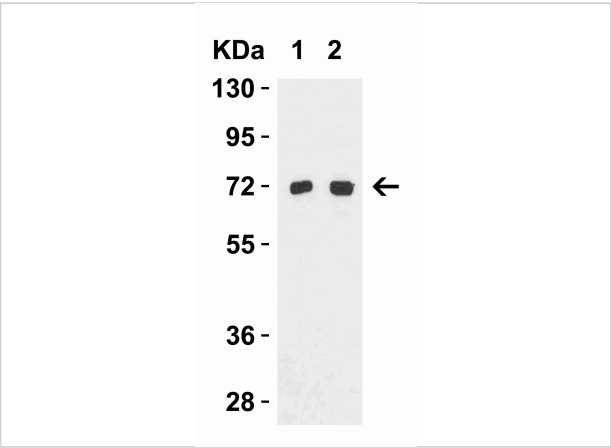
TOM70 Antibody 1

Figure 1 Independent Antibody Validation (IAV) via Protein Expression Profile in Human, Mouse and Rat Cell Lines
 Loading: 15 µg of lysates per lane. Antibodies: TOM70 4949 (2 µg/...



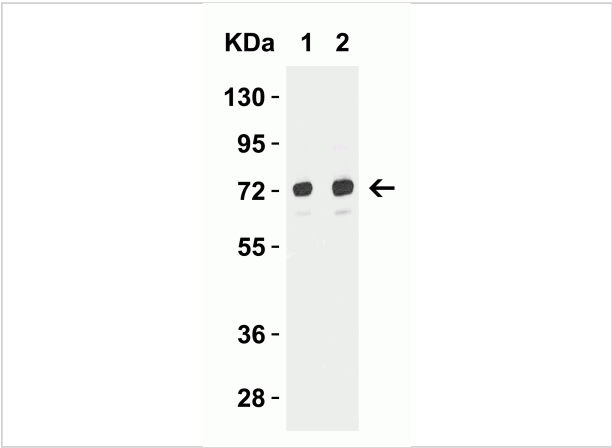
TOM70 Antibody 2

Figure 2 Western Blot Validation in Human and Mouse Cell Lines
 Loading: 15 µg of lysates per lane. Antibodies: TOM70 4949 (2 µg/mL), 1h incubation at RT in 5% NFDm/TBST. Seconda...



TOM70 Antibody 3

Figure 3 Western Blot Validation in Mouse Brain
 Loading: 15 µg of lysates per lane. Antibodies: TOM70 4949 (Lane 1: 2 µg/mL and Lane 2: 4 µg/mL), 1h incubation at RT in 5% NFDm/...



TOM70 Antibody 4

Figure 4 Western Blot Validation in Rat Brain
 Loading: 15 µg of lysates per lane. Antibodies: TOM70 4949 (Lane 1: 2 µg/mL and Lane 2: 4 µg/mL), 1h incubation at RT in 5% NFDm/TB...

Disclaimer

Disclaimer	Optimal dilutions/concentrations should be determined by the end user. The information provided is a guideline for product use. This product is for research use only.
------------	--

For research use only. For additional information, visit ProSci's [Terms and Conditions Page](#).