

Bax Antibody

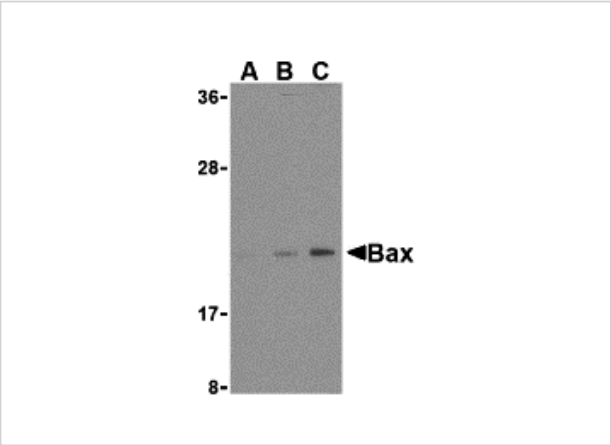
CATALOG NUMBER: 3351

Specifications

Host Species	Rabbit
Species Reactivity	Human
Homology	Predicted species reactivity based on immunogen sequence: Bovine: (100%), Mouse: (81%)
Immunogen	Bax antibody was raised against a peptide corresponding to 16 amino acids near the amino-terminus of human Bax. The immunogen is located within the first 50 amino acids of Bax.
Conjugate	Unconjugated
Tested Applications	ELISA, ICC, IF, IP, WB
User Note	Optimal dilutions for each application to be determined by the researcher.

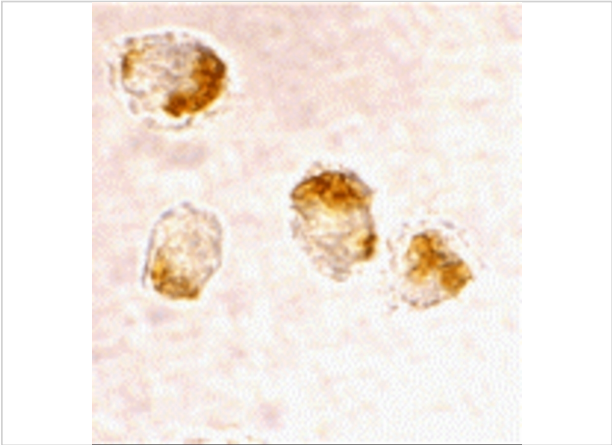
Properties

Purification	Bax Antibody is Ion exchange chromatography purified.
Clonality	Polyclonal
Isotype	IgG
Physical State	Liquid
Buffer	Bax Antibody is supplied in PBS containing 0.02% sodium azide.
Concentration	1 mg/mL
Storage Conditions	Bax antibody can be stored at 4°C for three months and -20°C, stable for up to one year. As with all antibodies care should be taken to avoid repeated freeze thaw cycles. Antibodies should not be exposed to prolonged high temperatures.



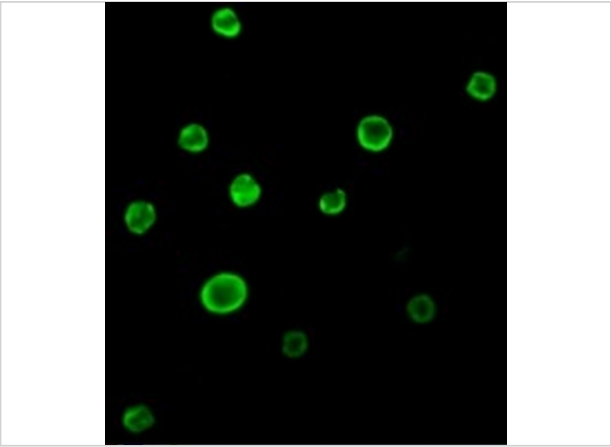
Bax Antibody 1

Western blot analysis of Bax in HL-60 cell lysates with Bax antibody at (A) 1, (B) 2, and (C) 4 µg/mL.



Bax Antibody 2

Immunocytochemistry staining of HL-60 cells using Bax at 2 µg/mL.



Bax Antibody 3

Immunofluorescence of Bax in HL60 cells with Bax antibody at 2 µg/mL.

Disclaimer

Disclaimer	Optimal dilutions/concentrations should be determined by the end user. The information provided is a guideline for product use. This product is for research use only.
------------	--

For research use only. For additional information, visit ProSci's [Terms and Conditions Page](#).