

## JPH3 Antibody

CATALOG NUMBER: 4931

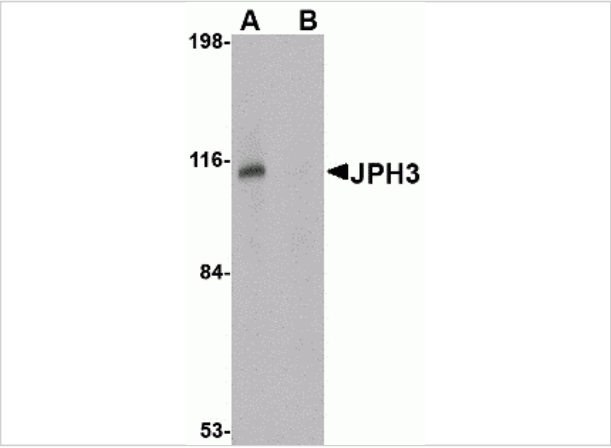
### Specifications

Host Species	Rabbit
Species Reactivity	Human, Mouse, Rat
Immunogen	JPH3 antibody was raised against a 18 amino acid synthetic peptide near the center of human JPH3. The immunogen is located within amino acids 410 - 460 of JPH3.
Conjugate	Unconjugated
Tested Applications	ELISA, IF, IHC-P, WB
User Note	Optimal dilutions for each application to be determined by the researcher.

### Properties

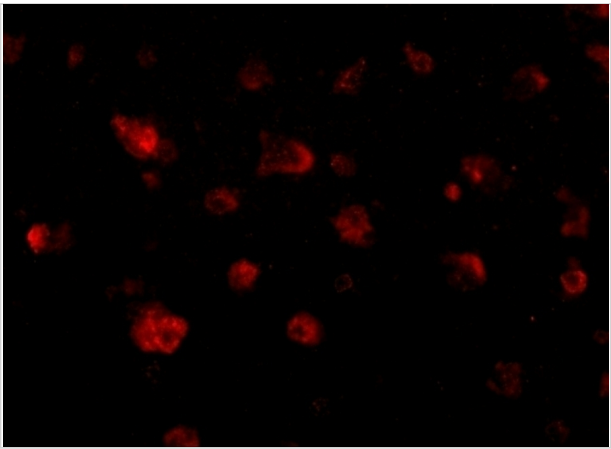
Purification	JPH3 Antibody is affinity chromatography purified via peptide column.
Clonality	Polyclonal
Isotype	IgG
Physical State	Liquid
Buffer	JPH3 Antibody is supplied in PBS containing 0.02% sodium azide.
Concentration	1 mg/mL
Storage Conditions	JPH3 antibody can be stored at 4°C for three months and -20°C, stable for up to one year. As with all antibodies care should be taken to avoid repeated freeze thaw cycles. Antibodies should not be exposed to prolonged high temperatures.





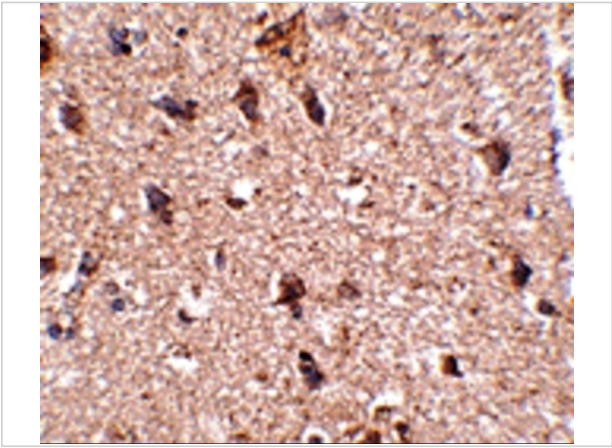
JPH3 Antibody 1

Western blot analysis of JPH3 in Daudi cell lysate with JPH3 antibody at 1 µg/mL in (A) the absence and (B) the presence of blocking peptide.



JPH3 Antibody 3

Immunofluorescence of JPH3 in human brain tissue with JPH3 antibody at 20 µg/mL.



JPH3 Antibody 2

Immunohistochemistry of JPH3 in human brain tissue with JPH3 antibody at 2.5 µg/mL.

Disclaimer

Disclaimer	Optimal dilutions/concentrations should be determined by the end user. The information provided is a guideline for product use. This product is for research use only.
------------	--

For research use only. For additional information, visit ProSci's [Terms and Conditions Page](#).