

## JPH4 Antibody

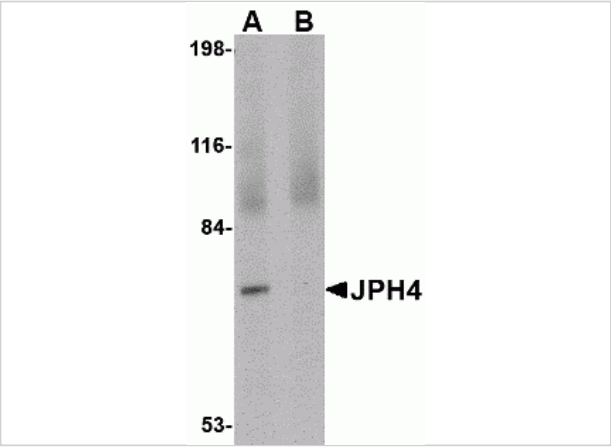
CATALOG NUMBER: 4923

### Specifications

Host Species	Rabbit
Species Reactivity	Human, Mouse, Rat
Immunogen	JPH4 antibody was raised against a 16 amino acid synthetic peptide near the carboxy terminus of human JPH4. The immunogen is located within amino acids 530 - 580 of JPH4.
Conjugate	Unconjugated
Tested Applications	ELISA, IF, IHC-P, WB
User Note	Optimal dilutions for each application to be determined by the researcher.

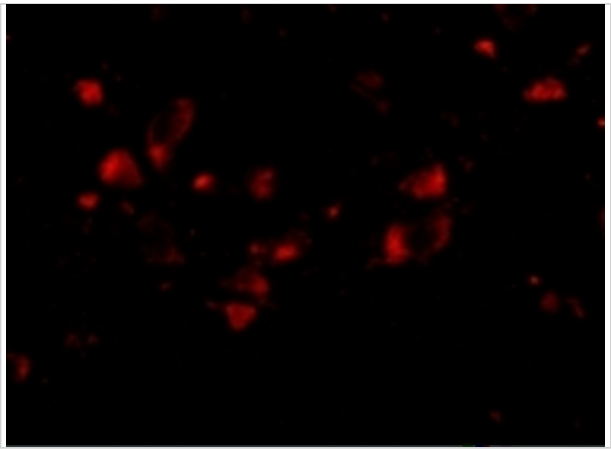
### Properties

Purification	JPH4 Antibody is affinity chromatography purified via peptide column.
Clonality	Polyclonal
Isotype	IgG
Physical State	Liquid
Buffer	JPH4 Antibody is supplied in PBS containing 0.02% sodium azide.
Concentration	1 mg/mL
Storage Conditions	JPH4 antibody can be stored at 4°C for three months and -20°C, stable for up to one year. As with all antibodies care should be taken to avoid repeated freeze thaw cycles. Antibodies should not be exposed to prolonged high temperatures.



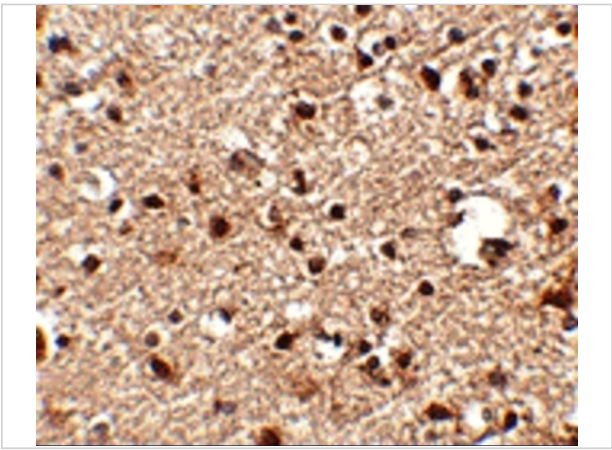
JPH4 Antibody 1

Western blot analysis of JPH4 in 293 cell lysate with JPH4 antibody at 1 µg/mL in (A) the absence and (B) the presence of blocking peptide.



JPH4 Antibody 3

Immunofluorescence of JPH4 in Human Brain cells with JPH4 antibody at 20 µg/mL.



JPH4 Antibody 2

Immunohistochemistry of JPH4 in human brain tissue with JPH4 antibody at 2.5 µg/mL.

Disclaimer

Disclaimer	Optimal dilutions/concentrations should be determined by the end user. The information provided is a guideline for product use. This product is for research use only.
------------	--

For research use only. For additional information, visit ProSci's [Terms and Conditions Page](#).