

## Bcl-2 Antibody

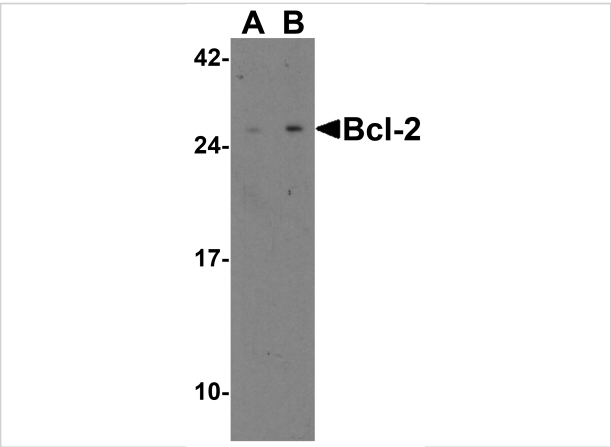
CATALOG NUMBER: 3335

### Specifications

Host Species	Rabbit
Species Reactivity	Human, Mouse
Homology	Predicted species reactivity based on immunogen sequence: Bovine: (100%), Rat: (100%), Chicken: (93%)
Immunogen	Anti-Bcl-2 antibody ( <b>3335</b> ) was raised against a peptide corresponding to 15 amino acids near the amino terminus of human Bcl-2. The immunogen is located within the first 50 amino acids of Bcl-2.
Conjugate	Unconjugated
Tested Applications	ELISA, IF, IHC-P, WB
User Note	Optimal dilutions for each application to be determined by the researcher.
Predicted Molecular Weight	Predicted: 26kD Observed: 26 kD

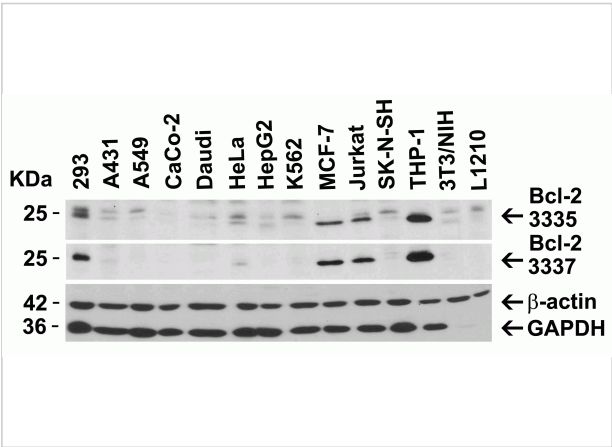
### Properties

Purification	Bcl-2 Antibody is Ion exchange chromatography purified.
Clonality	Polyclonal
Isotype	IgG
Physical State	Liquid
Buffer	Bcl-2 Antibody is supplied in PBS containing 0.02% sodium azide.
Concentration	1 mg/mL
Storage Conditions	Bcl-2antibody can be stored at 4°C for three months and -20°C, stable for up to one year. As with all antibodies care should be taken to avoid repeated freeze thaw cycles. Antibodies should not be exposed to prolonged high temperatures.



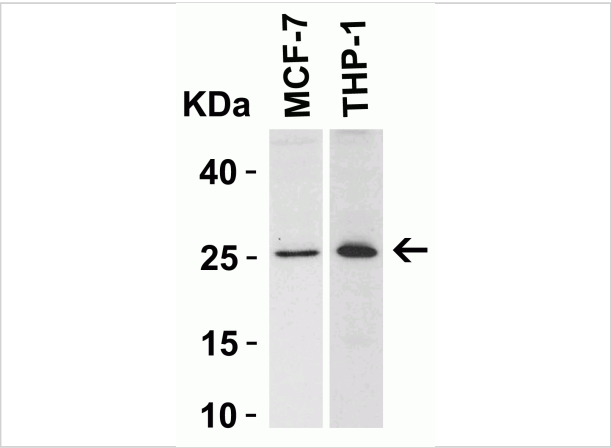
### Bcl-2 Antibody 1

**Figure 1 Western Blot Validation in Human and Mouse Cell Lines**  
 Loading: 15 µg of lysates per lane. Antibodies: Bcl-2 3335, (2 µg/mL), 1h incubation at RT in 5% NFDm/TBST. Secondary: Goat anti-mouse IgG (2 µg/mL), 1h incubation at RT in 5% NFDm/TBST. ECL substrate.



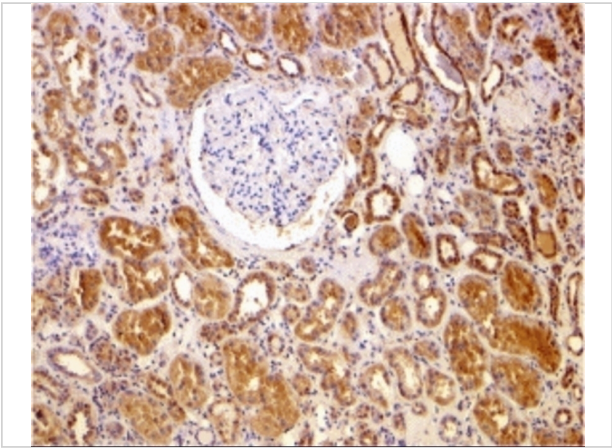
### Bcl-2 Antibody 2

**Figure 2 Independent Antibody Validation (IAV) via Protein Expression Profile in Cell Lines**  
 Loading: 15 µg of lysates per lane. Antibodies: Bcl-2 3335, (2 µg/mL), Bcl-2 3337, (2 µg/mL), β-actin, (2 µg/mL), GAPDH, (2 µg/mL). ECL substrate.



### Bcl-2 Antibody 3

**Figure 3 Western Blot Validation in Human Cell Lines**  
 Loading: 15 µg of lysates per lane. Antibodies: Bcl-2 3335, (2 µg/mL), 1h incubation at RT in 5% NFDm/TBST. Secondary: Goat anti-mouse IgG (2 µg/mL), 1h incubation at RT in 5% NFDm/TBST. ECL substrate.



### Bcl-2 Antibody 4

**Figure 4 Immunohistochemistry Validation of Bcl-2 in Human Kidney**  
 Immunohistochemical analysis of paraffin-embedded Human Kidney using anti-Bcl-2 antibody (3335) at 2 µg/mL. Ti...

## Disclaimer

<b>Disclaimer</b>	Optimal dilutions/concentrations should be determined by the end user. The information provided is a guideline for product use. This product is for research use only.
-------------------	--

For research use only. For additional information, visit ProSci's [Terms and Conditions Page](#).