

ZBRK1 Antibody

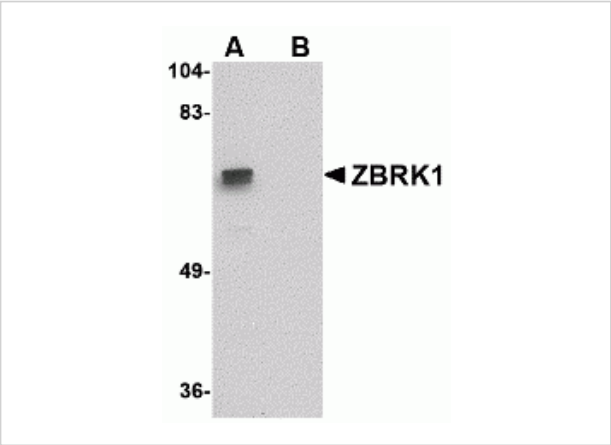
CATALOG NUMBER: 4817

Specifications

Host Species	Rabbit
Species Reactivity	Human, Mouse, Rat
Immunogen	ZBRK1 antibody was raised against a 20 amino acid synthetic peptide near the carboxy terminus of the human ZBRK1. The immunogen is located within amino acids 410 - 460 of ZBRK1.
Conjugate	Unconjugated
Tested Applications	ELISA, WB
User Note	Optimal dilutions for each application to be determined by the researcher.

Properties

Purification	ZBRK1 Antibody is affinity chromatography purified via peptide column.
Clonality	Polyclonal
Isotype	IgG
Physical State	Liquid
Buffer	ZBRK1 Antibody is supplied in PBS containing 0.02% sodium azide.
Concentration	1 mg/mL
Storage Conditions	ZBRK1 antibody can be stored at 4°C for three months and -20°C, stable for up to one year. As with all antibodies care should be taken to avoid repeated freeze thaw cycles. Antibodies should not be exposed to prolonged high temperatures.



ZBRK1 Antibody 1

Western blot analysis of ZBRK1 in A-20 lysate with ZBRK1 antibody at 1 µg/mL in (A) the absence and (B) the presence of blocking peptide.

Disclaimer

Disclaimer	Optimal dilutions/concentrations should be determined by the end user. The information provided is a guideline for product use. This product is for research use only.
------------	--

For research use only. For additional information, visit ProSci's [Terms and Conditions Page](#).