

HINT1 Antibody

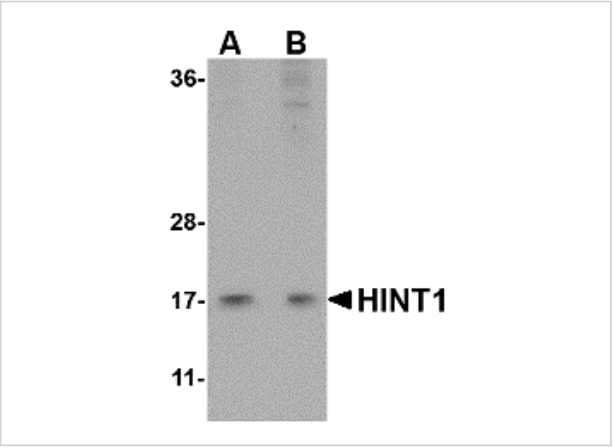
CATALOG NUMBER: 4815

Specifications

Host Species	Rabbit
Species Reactivity	Human, Mouse, Rat
Homology	Predicted species reactivity based on immunogen sequence: Rabbit: (100%), Bovine: (100%)
Immunogen	HINT1 antibody was raised against a 17 amino acid synthetic peptide near the center of the human HINT1. The immunogen is located within the last 50 amino acids of HINT1.
Conjugate	Unconjugated
Tested Applications	ELISA, ICC, WB
User Note	Optimal dilutions for each application to be determined by the researcher.

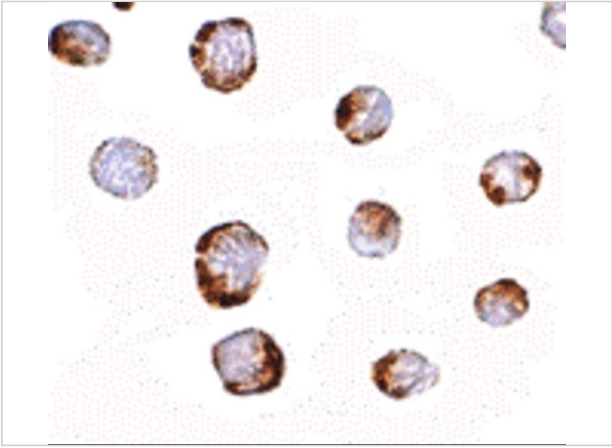
Properties

Purification	HINT1 Antibody is affinity chromatography purified via peptide column.
Clonality	Polyclonal
Isotype	IgG
Physical State	Liquid
Buffer	HINT1 Antibody is supplied in PBS containing 0.02% sodium azide.
Concentration	1 mg/mL
Storage Conditions	HINT1 antibody can be stored at 4°C for three months and -20°C, stable for up to one year. As with all antibodies care should be taken to avoid repeated freeze thaw cycles. Antibodies should not be exposed to prolonged high temperatures.



HINT1 Antibody 1

Western blot analysis of HINT1 in Jurkat lysate with HINT1 antibody at (A) 1 and (B) 2 µg/mL.



HINT1 Antibody 2

Immunocytochemistry of HINT1 in Jurkat cells with HINT1 antibody at 2.5 µg/mL.

Disclaimer

Disclaimer	Optimal dilutions/concentrations should be determined by the end user. The information provided is a guideline for product use. This product is for research use only.
-------------------	--

For research use only. For additional information, visit ProSci's [Terms and Conditions Page](#).