

## Akirin2 Antibody

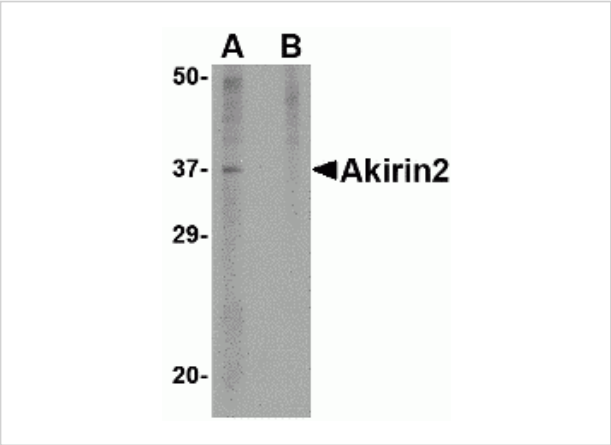
CATALOG NUMBER: 4803

### Specifications

Host Species	Rabbit
Species Reactivity	Human, Mouse
Homology	Predicted species reactivity based on immunogen sequence: Rat: (100%), Bovine: (100%)
Immunogen	Akirin2 antibody was raised against a 15 amino acid synthetic peptide near the center of the human Akirin2. The immunogen is located within amino acids 50 - 100 of Akirin2.
Conjugate	Unconjugated
Tested Applications	ELISA, WB
User Note	Optimal dilutions for each application to be determined by the researcher.

### Properties

Purification	Akirin2 Antibody is affinity chromatography purified via peptide column.
Clonality	Polyclonal
Isotype	IgG
Physical State	Liquid
Buffer	Akirin2 Antibody is supplied in PBS containing 0.02% sodium azide.
Concentration	1 mg/mL
Storage Conditions	Akirin2 antibody can be stored at 4°C for three months and -20°C, stable for up to one year. As with all antibodies care should be taken to avoid repeated freeze thaw cycles. Antibodies should not be exposed to prolonged high temperatures.



Akirin2 Antibody 1

Western blot analysis of Akirin2 in mouse brain tissue lysate with Akirin2 antibody at 1 µg/mL in (A) the absence and (B) the presence of blocking peptide.

Disclaimer

Disclaimer	Optimal dilutions/concentrations should be determined by the end user. The information provided is a guideline for product use. This product is for research use only.
------------	--

For research use only. For additional information, visit ProSci's [Terms and Conditions Page](#).