

CDCA8 Antibody

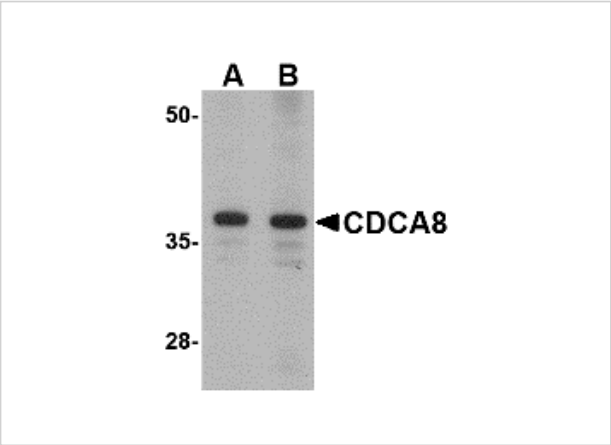
CATALOG NUMBER: 4751

Specifications

Host Species	Rabbit
Species Reactivity	Human, Mouse, Rat
Immunogen	CDCA8 antibody was raised against a 19 amino acid synthetic peptide near the amino terminus of the human CDCA8. The immunogen is located within the first 50 amino acids of CDCA8.
Conjugate	Unconjugated
Tested Applications	ELISA, IF, WB
User Note	Optimal dilutions for each application to be determined by the researcher.

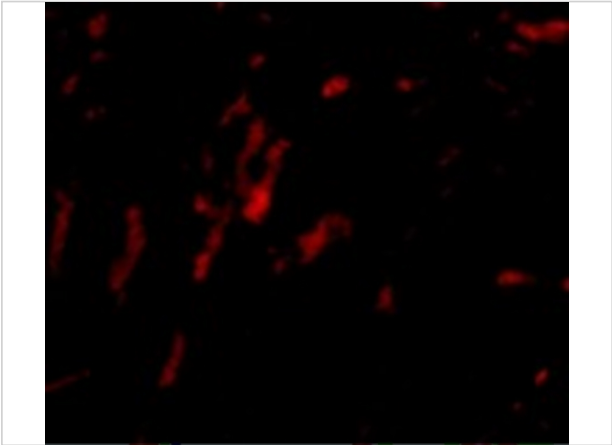
Properties

Purification	CDCA8 Antibody is affinity chromatography purified via peptide column.
Clonality	Polyclonal
Isotype	IgG
Physical State	Liquid
Buffer	CDCA8 Antibody is supplied in PBS containing 0.02% sodium azide.
Concentration	1 mg/mL
Storage Conditions	CDCA8 antibody can be stored at 4°C for three months and -20°C, stable for up to one year. As with all antibodies care should be taken to avoid repeated freeze thaw cycles. Antibodies should not be exposed to prolonged high temperatures.



CDCA8 Antibody 1

Western blot analysis of CDCA8 in Rat kidney lysate with CDCA8 antibody at (A) 1 and (B) 2 µg/mL.



CDCA8 Antibody 2

Immunofluorescence of CDCA8 in rat kidney tissue with CDCA8 antibody at 20 µg/mL.

Disclaimer

Disclaimer	Optimal dilutions/concentrations should be determined by the end user. The information provided is a guideline for product use. This product is for research use only.
------------	--

For research use only. For additional information, visit ProSci's [Terms and Conditions Page](#).