



ProSci Incorporated  
12170 Flint Place  
Poway, CA 92064, USA  
prosci-inc.com

P: +1 (888) 513-9525  
Local: +1 (858) 513-2638  
Fax: +1 (858) 513-2692

customercare@prosci-inc.com  
techsupport@prosci-inc.com

## TRIM30 Antibody

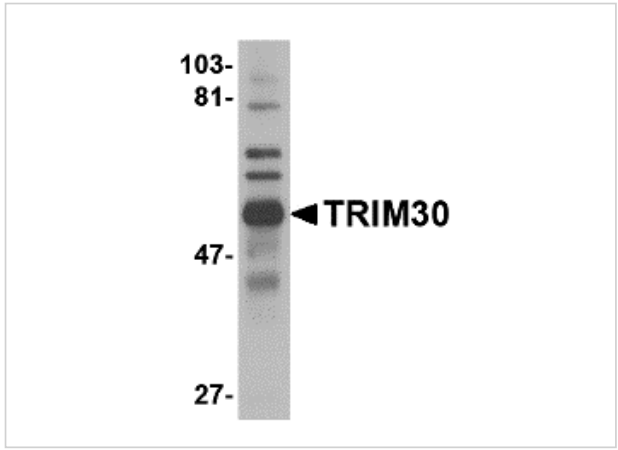
CATALOG NUMBER: 4745

### Specifications

Host Species	Rabbit
Species Reactivity	Mouse
Immunogen	TRIM30 antibody was raised against a 16 amino acid synthetic peptide near the carboxy terminus of the mouse TRIM30. The immunogen is located within amino acids 250 - 300 of TRIM30.
Conjugate	Unconjugated
Tested Applications	ELISA, IF, IHC-P, WB
User Note	Optimal dilutions for each application to be determined by the researcher.

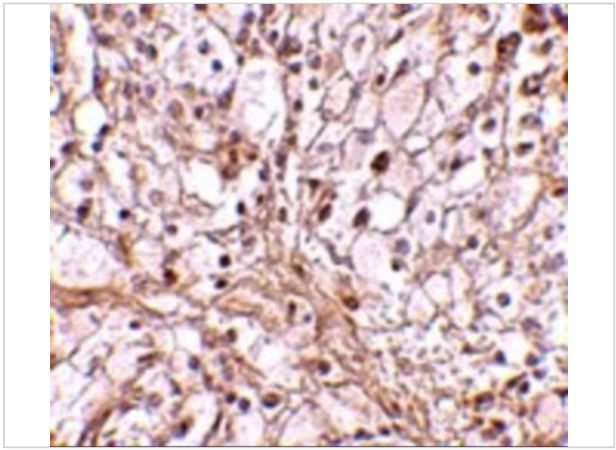
### Properties

Purification	TRIM30 Antibody is affinity chromatography purified via peptide column.
Clonality	Polyclonal
Isotype	IgG
Physical State	Liquid
Buffer	TRIM30 Antibody is supplied in PBS containing 0.02% sodium azide.
Concentration	1 mg/mL
Storage Conditions	TRIM30 antibody can be stored at 4°C for three months and -20°C, stable for up to one year. As with all antibodies care should be taken to avoid repeated freeze thaw cycles. Antibodies should not be exposed to prolonged high temperatures.



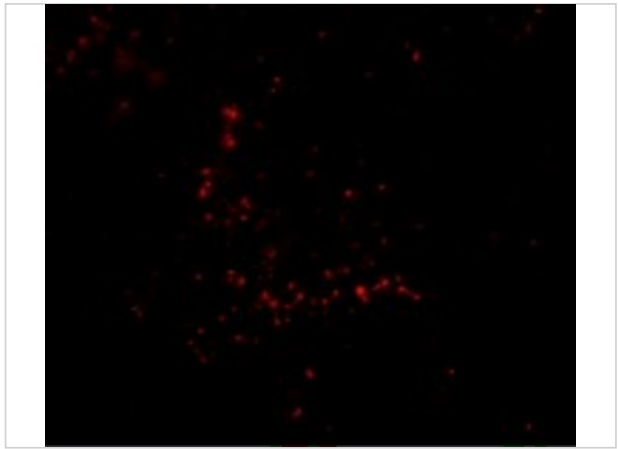
### TRIM30 Antibody 1

Western blot analysis of TRIM30 in mouse spleen tissue lysate with TRIM30 antibody at 1 µg/mL.



### TRIM30 Antibody 2

Immunohistochemistry of TRIM30 in mouse ovary tissue with TRIM30 antibody at 10 µg/mL.



### TRIM30 Antibody 3

Immunofluorescence of TRIM30 in Human Ovary cells with TRIM30 antibody at 20 µg/mL.

## Disclaimer

Disclaimer	Optimal dilutions/concentrations should be determined by the end user. The information provided is a guideline for product use. This product is for research use only.
------------	--

For research use only. For additional information, visit ProSci's [Terms and Conditions Page](#).