

BMP15 Antibody

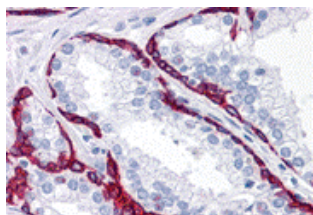
CATALOG NUMBER: 4739

Specifications

Host Species	Rabbit
Species Reactivity	Human
Homology	Predicted species reactivity based on immunogen sequence: Mouse: (89%), Sheep: (83%), Bovine: (83%)
Immunogen	Rabbit polyclonal BMP15 antibody was raised against an 18 amino acid peptide near the amino terminus of human BMP15. The immunogen is located within amino acids 60 - 110 of BMP15.
Conjugate	Unconjugated
Tested Applications	ELISA, IHC-P
User Note	Optimal dilutions for each application to be determined by the researcher.
Predicted Molecular Weight	43 kDa

Properties

Purification	BMP15 Antibody is affinity chromatography purified via peptide column.
Clonality	Polyclonal
Isotype	IgG
Physical State	Liquid
Buffer	BMP15 Antibody is supplied in PBS containing 0.02% sodium azide.
Concentration	1 mg/mL
Storage Conditions	BMP15 antibody can be stored at 4°C for three months and -20°C, stable for up to one year.



BMP15 Antibody 1

Immunohistochemistry of BMP15 in human prostate tissue with BMP15 antibody at 10 µg/mL

Disclaimer

Disclaimer	Optimal dilutions/concentrations should be determined by the end user. The information provided is a guideline for product use. This product is for research use only.
------------	--

For research use only. For additional information, visit ProSci's [Terms and Conditions Page](#).