

## RIPK1 Antibody

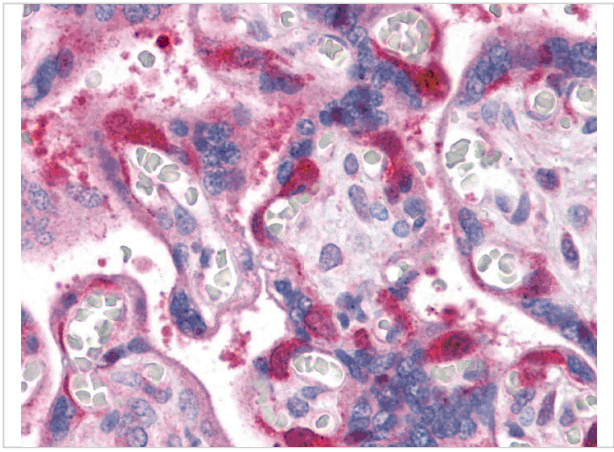
CATALOG NUMBER: 3291

### Specifications

|                            |   |
|----------------------------|---|
| Host Species               | Rabbit  |
| Species Reactivity         | Human   |
| Homology                   | Predicted species reactivity based on immunogen sequence: Mouse: (100%)   |
| Immunogen                  | RIPK1 antibody was raised against a 14 amino acid peptide near the carboxy terminus of human RIP1.<br>The immunogen is located within amino acids 600 - 650 of RIPK1. |
| Conjugate                  | Unconjugated  |
| Tested Applications        | ELISA, IHC-P  |
| User Note                  | Optimal dilutions for each application to be determined by the researcher.  |
| Predicted Molecular Weight | Predicted: 74 kDa   |

### Properties

|                    |  |
|--------------------|--|
| Purification       | RIPK1 Antibody is affinity chromatography purified via peptide column.                     |
| Clonality          | Polyclonal   |
| Isotype            | IgG  |
| Physical State     | Liquid   |
| Buffer             | RIPK1 Antibody is supplied in PBS containing 0.02% sodium azide.                           |
| Concentration      | 1 mg/mL  |
| Storage Conditions | RIPK1 antibody can be stored at 4°C for three months and -20°C, stable for up to one year. |



## RIPK1 Antibody 1

Immunohistochemistry of RIP1 in human placenta tissue with RIP1 antibody at 10 µg/mL.

## Disclaimer

|            |  |
|------------|--|
| Disclaimer | Optimal dilutions/concentrations should be determined by the end user. The information provided is a guideline for product use. This product is for research use only. |
|------------|--|

For research use only. For additional information, visit ProSci's [Terms and Conditions Page](#).