

MD-2 Antibody

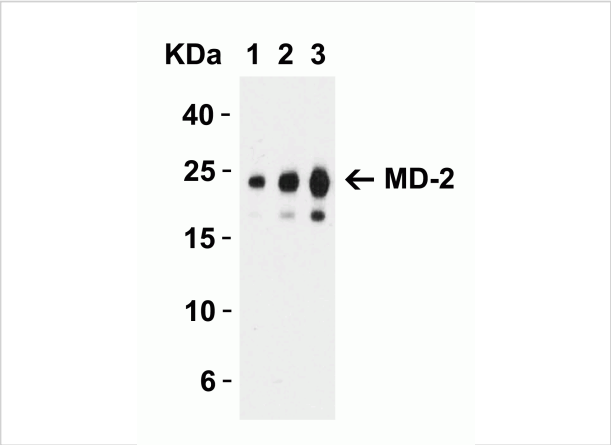
CATALOG NUMBER: 3289

Specifications

Host Species	Rabbit
Species Reactivity	Human, Mouse, Rat
Immunogen	Anti-MD-2 antibody (3289) was raised against a peptide corresponding to 13 amino acids near the center of human MD-2. The immunogen is located within the last 50 amino acids of MD-2.
Conjugate	Unconjugated
Tested Applications	ELISA, IF, IHC-P, WB
User Note	Optimal dilutions for each application to be determined by the researcher.
Predicted Molecular Weight	Predicted: 19kD Observed: 26 kD (Post-modification: 2 N-linked glycosylations)

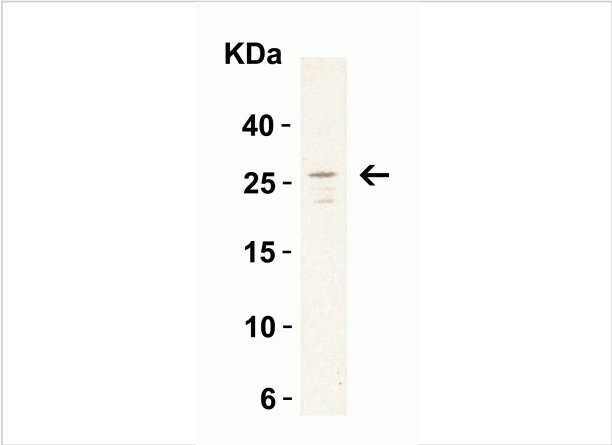
Properties

Purification	MD-2 Antibody is affinity chromatography purified via peptide column.
Clonality	Polyclonal
Isotype	IgG
Physical State	Liquid
Buffer	MD-2 Antibody is supplied in PBS containing 0.02% sodium azide.
Concentration	1 mg/mL
Storage Conditions	MD-2 antibody can be stored at 4°C up to one year. Antibodies should not be exposed to prolonged high temperatures.



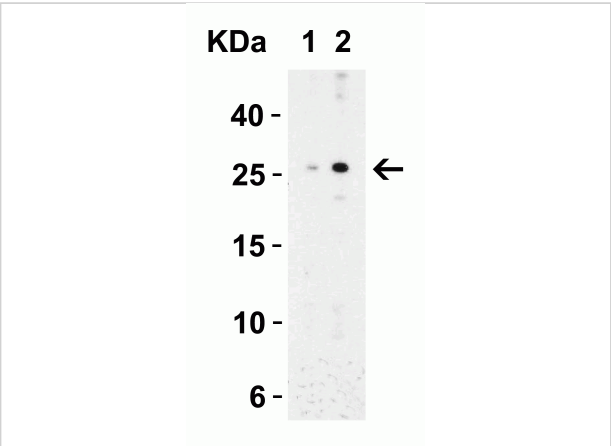
MD-2 Antibody 1

Figure 1 Western Blot Validation with Recombinant Protein
Loading: 30 ng of human MD-2 recombinant protein per lane. Antibodies: MD-2, 3289 (Lane 1: 0.5 µg/mL, Lane 2: 1 µg/mL an...



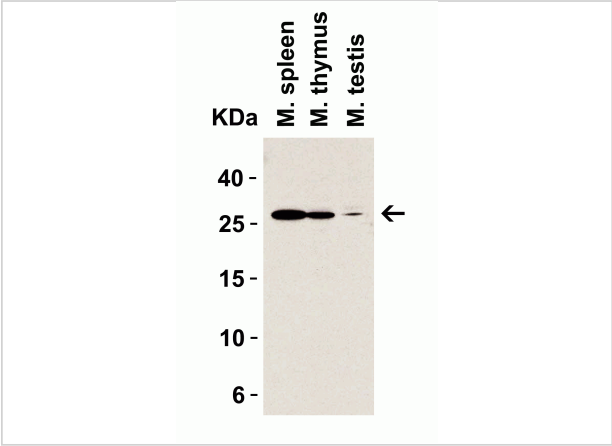
MD-2 Antibody 2

Figure 2 Western Blot Validation in Daudi Cell Lysate
Loading: 15 µg of lysates per lane. Antibodies: MD-2, 3289 (1 µg/mL), 1h incubation at RT in 5% NFDm/TBST. Secondary: Goat an...



MD-2 Antibody 3

Figure 3 Western Blot Validation in Mouse Spleen Tissue Lysate
Loading: 15 µg of lysates per lane. Antibodies: MD-2, 3289 (Lane 1: 0.5 µg/mL and Lane 2: 1 µg/mL), 1h incubation a...



MD-2 Antibody 4

Figure 4 Western Blot Validation in Mouse Tissue Lysates
Loading: 15 µg of lysates per lane. Antibodies: MD-2, 3289 (1 µg/mL), 1h incubation at RT in 5% NFDm/TBST. Secondary: Goat...

Disclaimer

Disclaimer	Optimal dilutions/concentrations should be determined by the end user. The information provided is a guideline for product use. This product is for research use only.
------------	--

For research use only. For additional information, visit ProSci's [Terms and Conditions Page](#).