

LASS5 Antibody

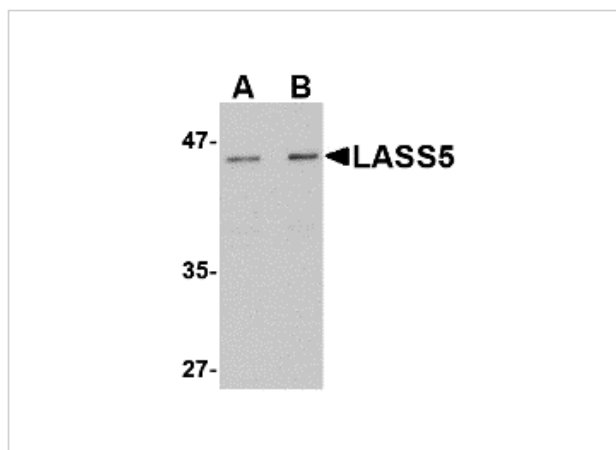
CATALOG NUMBER: 4697

Specifications

Host Species	Rabbit
Species Reactivity	Human, Mouse, Rat
Immunogen	LASS5 antibody was raised against a 18 amino acid synthetic peptide near the amino terminus of the human LASS5. The immunogen is located within amino acids 90 - 140 of LASS5.
Conjugate	Unconjugated
Tested Applications	ELISA, IF, IHC-P, WB
User Note	Optimal dilutions for each application to be determined by the researcher.
Specificity	Multiple isoforms of LASS5 are known to exist. This antibody may cross-react with the highly homologous LASS6.

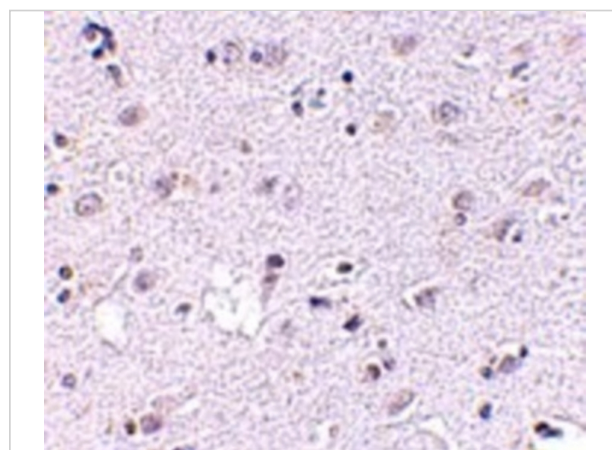
Properties

Purification	LASS5 Antibody is affinity chromatography purified via peptide column.
Clonality	Polyclonal
Isotype	IgG
Physical State	Liquid
Buffer	LASS5 Antibody is supplied in PBS containing 0.02% sodium azide.
Concentration	1 mg/mL
Storage Conditions	LASS5 antibody can be stored at 4°C for three months and -20°C, stable for up to one year. As with all antibodies care should be taken to avoid repeated freeze thaw cycles. Antibodies should not be exposed to prolonged high temperatures.



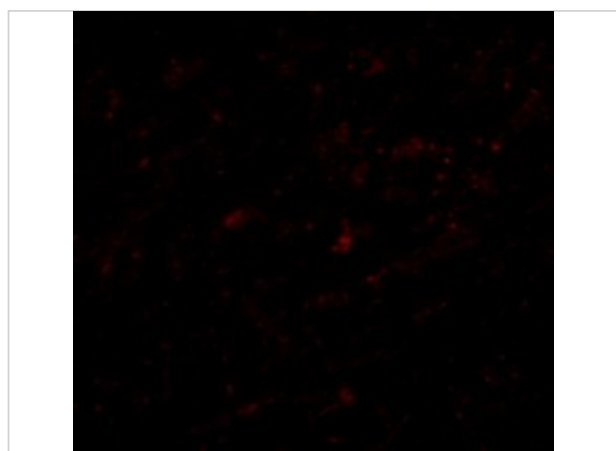
LASS5 Antibody 1

Western blot analysis of LASS5 in rat brain tissue lysate with LASS5 antibody at (A) 1 and (B) 2 $\mu\text{g/mL}$.



LASS5 Antibody 2

Immunohistochemistry of LASS5 in human brain tissue with LASS5 antibody at 2.5 $\mu\text{g/mL}$.



LASS5 Antibody 3

Immunofluorescence of LASS5 in Human Brain cells with LASS5 antibody at 20 $\mu\text{g/mL}$.

Disclaimer

Disclaimer

Optimal dilutions/concentrations should be determined by the end user. The information provided is a guideline for product use. This product is for research use only.

For research use only. For additional information, visit ProSci's [Terms and Conditions Page](#).