

Nanos1 Antibody

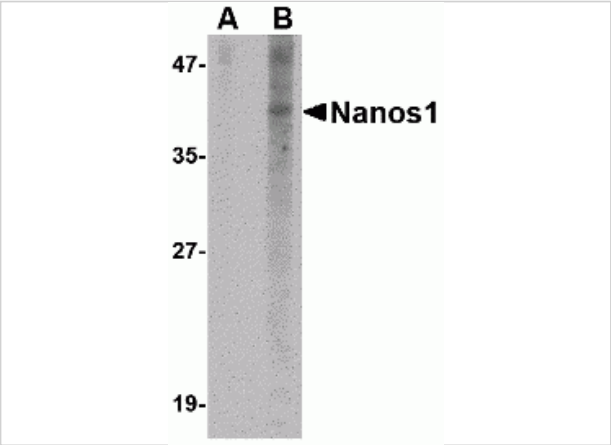
CATALOG NUMBER: 4683

Specifications

Host Species	Rabbit
Species Reactivity	Human
Homology	Predicted species reactivity based on immunogen sequence: Mouse: (88%)
Immunogen	Nanos1 antibody was raised against a 17 amino acid synthetic peptide from near the amino terminus of human Nanos1. The immunogen is located within the first 50 amino acids of Nanos1.
Conjugate	Unconjugated
Tested Applications	ELISA, IF, IHC-P, WB
User Note	Optimal dilutions for each application to be determined by the researcher.

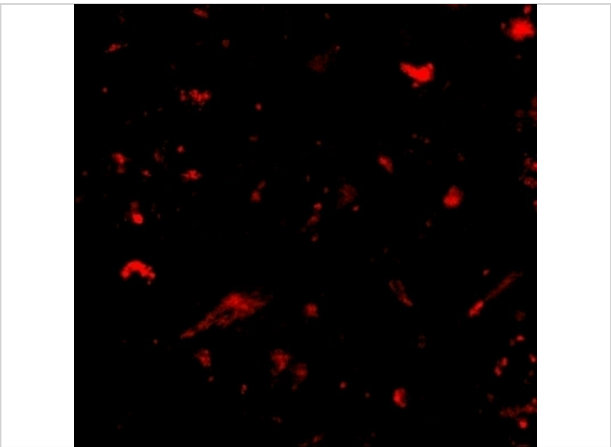
Properties

Purification	Nanos1 Antibody is affinity chromatography purified via peptide column.
Clonality	Polyclonal
Isotype	IgG
Physical State	Liquid
Buffer	Nanos1 Antibody is supplied in PBS containing 0.02% sodium azide.
Concentration	1 mg/mL
Storage Conditions	Nanos1 antibody can be stored at 4°C for three months and -20°C, stable for up to one year. As with all antibodies care should be taken to avoid repeated freeze thaw cycles. Antibodies should not be exposed to prolonged high temperatures.



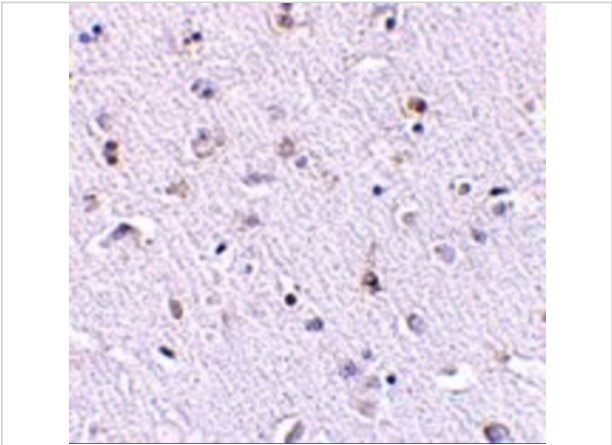
Nanos1 Antibody 1

Western blot analysis of Nanos1 in SK-N-SH cell lysate with Nanos1 antibody at 1 µg/mL in (A) the presence and (B) the absence of blocking peptide.



Nanos1 Antibody 3

Immunofluorescence of nanos1 in human brain tissue with nanos1 antibody at 20 µg/mL.



Nanos1 Antibody 2

Immunohistochemistry of Nanos1 in human brain tissue with Nanos1 antibody at 2.5 µg/mL

Disclaimer

Disclaimer	Optimal dilutions/concentrations should be determined by the end user. The information provided is a guideline for product use. This product is for research use only.
------------	------------------------------------------------------------------------------------------------------------------------------------------------------------------------

For research use only. For additional information, visit ProSci's [Terms and Conditions Page](#).