

GPAT1 Antibody

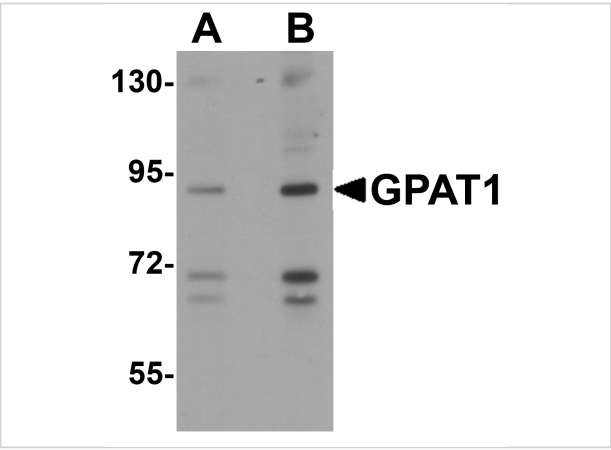
CATALOG NUMBER: 4613

Specifications

Host Species	Rabbit
Species Reactivity	Human, Mouse, Rat
Homology	Predicted species reactivity based on immunogen sequence: Pig: (100%), Bovine: (93%)
Immunogen	GPAT1 antibody was raised against a 15 amino acid synthetic peptide near the carboxy terminus of the human GPAT1. The immunogen is located within amino acids 730 - 780 of GPAT1.
Conjugate	Unconjugated
Tested Applications	ELISA, IF, IHC-P, WB
User Note	Optimal dilutions for each application to be determined by the researcher.
Specificity	At least four isoforms of GPAT1 are known to exist; this antibody will detect only the two largest isoforms.
Predicted Molecular Weight	Predicted: 87, 91 kDa Observed: 92 kDa

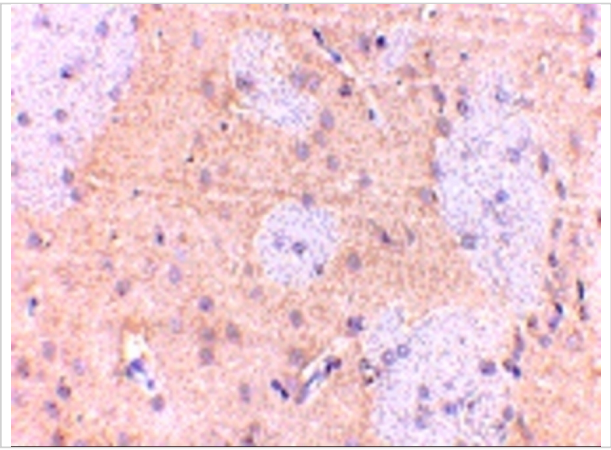
Properties

Purification	GPAT1 Antibody is affinity chromatography purified via peptide column.
Clonality	Polyclonal
Isotype	IgG
Physical State	Liquid
Buffer	GPAT1 Antibody is supplied in PBS containing 0.02% sodium azide.
Concentration	1 mg/mL
Storage Conditions	GPAT1 antibody can be stored at 4°C for three months and -20°C, stable for up to one year. As with all antibodies care should be taken to avoid repeated freeze thaw cycles. Antibodies should not be exposed to prolonged high temperatures.



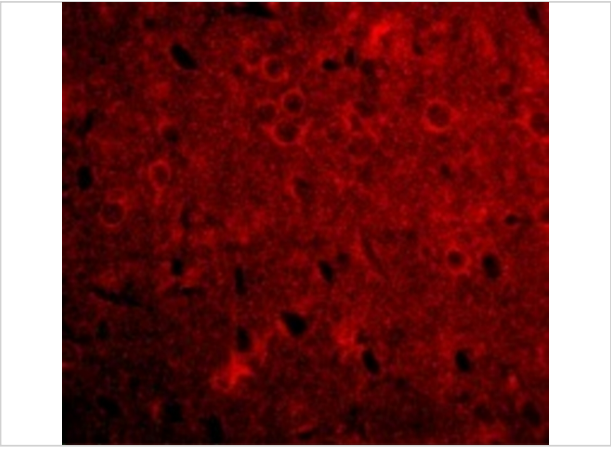
GPAT1 Antibody 1

Western blot analysis of GPAT1 in rat brain tissue lysate with GPAT1 antibody at (A) 1 and (B) 2 µg/mL.



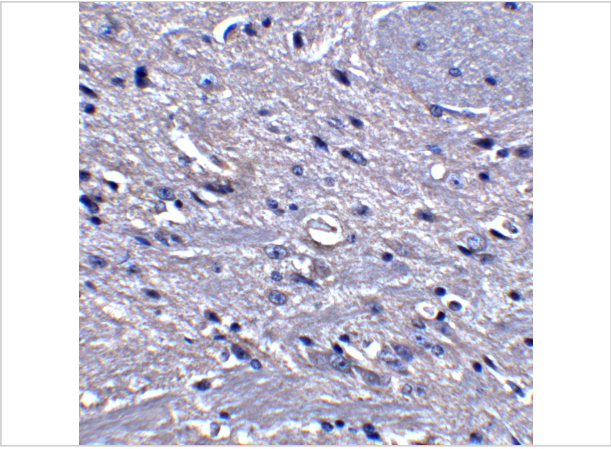
GPAT1 Antibody 2

Immunohistochemistry of GPAT1 in rat brain with GPAT1 antibody at 2.5 µg/mL.



GPAT1 Antibody 3

Immunofluorescence of GPAT1 in Rat Brain tissue with GPAT1 antibody at 20 µg/mL.



GPAT1 Antibody 4

Immunohistochemistry of GPAT1 in mouse brain tissue with GPAT1 antibody at 5 µg/mL.

Disclaimer

Disclaimer	Optimal dilutions/concentrations should be determined by the end user. The information provided is a guideline for product use. This product is for research use only.
-------------------	--

For research use only. For additional information, visit ProSci's [Terms and Conditions Page](#).