

## TLR7 Antibody

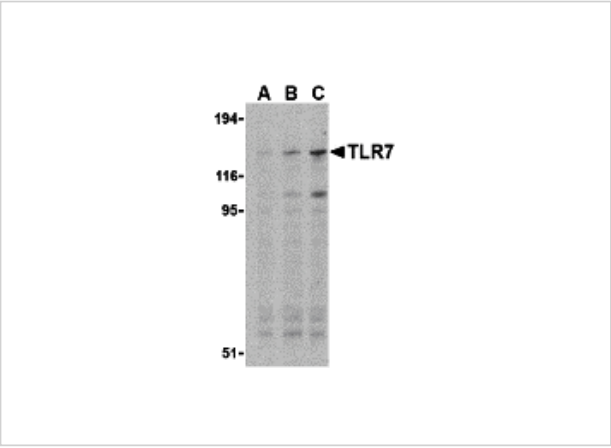
CATALOG NUMBER: 3269

### Specifications

Host Species	Rabbit
Species Reactivity	Human, Mouse
Immunogen	TLR7 antibody was raised against a peptide corresponding to 14 amino acids near the center of mouse TLR7. The immunogen is located within amino acids 420 - 470 of TLR7.
Conjugate	Unconjugated
Tested Applications	ELISA, ICC, WB
User Note	Optimal dilutions for each application to be determined by the researcher.
Predicted Molecular Weight	Predicted: 116 kDa Observed: 135 kDa

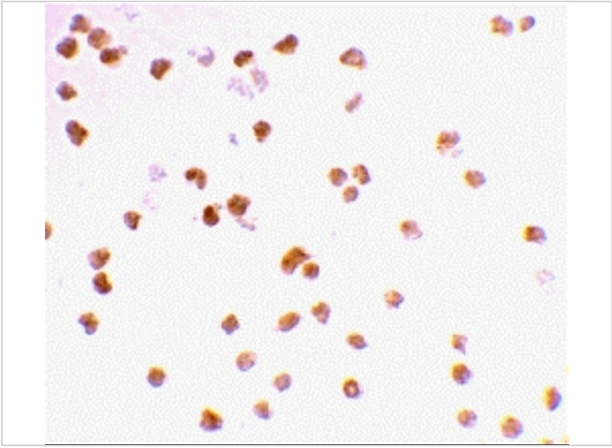
### Properties

Purification	TLR7 Antibody is affinity chromatography purified via peptide column.
Clonality	Polyclonal
Isotype	IgG
Physical State	Liquid
Buffer	TLR7 Antibody is supplied in PBS containing 0.02% sodium azide.
Concentration	1 mg/mL
Storage Conditions	TLR7 antibody can be stored at 4°C for three months and -20°C, stable for up to one year. As with all antibodies care should be taken to avoid repeated freeze thaw cycles. Antibodies should not be exposed to prolonged high temperatures.



TLR7 Antibody 1

Western blot analysis of TLR7 in Daudi cell lysates with TLR7 antibody at (A) 0.5, (B) 1, and (C) 2 µg/mL.



TLR7 Antibody 2

Immunocytochemistry staining of Daudi cells using TLR7 antibody at 2 µg/mL.

Disclaimer

Disclaimer	Optimal dilutions/concentrations should be determined by the end user. The information provided is a guideline for product use. This product is for research use only.
------------	--

For research use only. For additional information, visit ProSci's [Terms and Conditions Page](#).