

## VPS53 Antibody

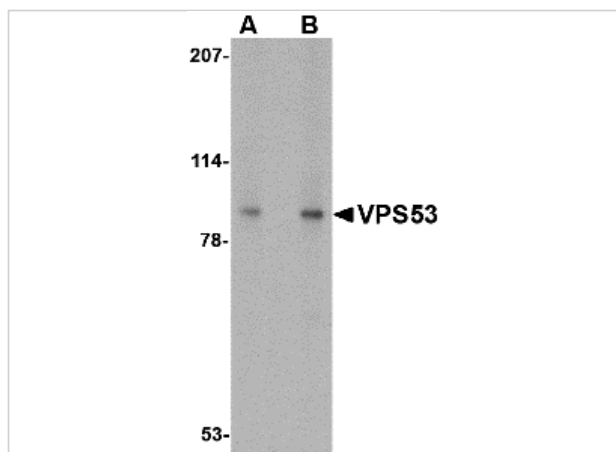
CATALOG NUMBER: 4593

### Specifications

Host Species	Rabbit
Species Reactivity	Human, Mouse, Rat
Homology	Predicted species reactivity based on immunogen sequence: Chicken: (94%)
Immunogen	VPS53 antibody was raised against a 18 amino acid synthetic peptide from near the carboxy terminus of human VPS53. The immunogen is located within the last 50 amino acids of VPS53.
Conjugate	Unconjugated
Tested Applications	ELISA, ICC, IF, WB
User Note	Optimal dilutions for each application to be determined by the researcher.

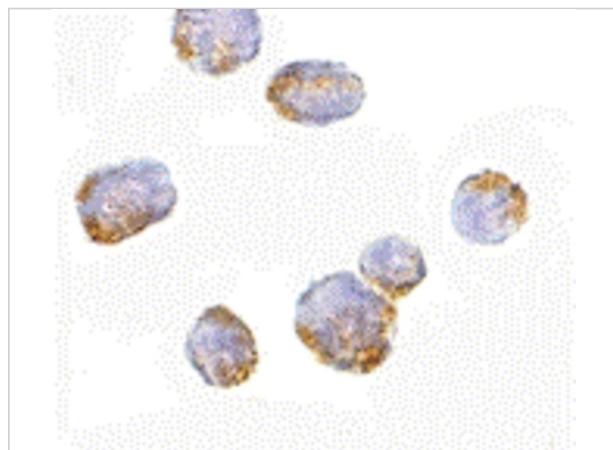
### Properties

Purification	VPS53 Antibody is affinity chromatography purified via peptide column.
Clonality	Polyclonal
Isotype	IgG
Physical State	Liquid
Buffer	VPS53 Antibody is supplied in PBS containing 0.02% sodium azide.
Concentration	1 mg/mL
Storage Conditions	VPS53 antibody can be stored at 4°C for three months and -20°C, stable for up to one year. As with all antibodies care should be taken to avoid repeated freeze thaw cycles. Antibodies should not be exposed to prolonged high temperatures.



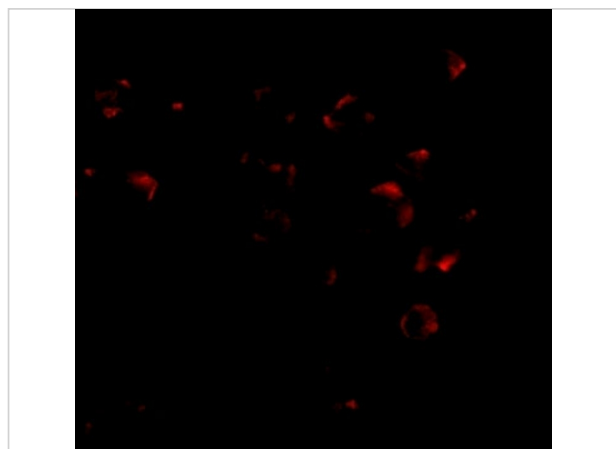
## VPS53 Antibody 1

Western blot analysis of VPS53 in 293 cell lysate with VPS53 antibody at (A) 0.5 and (B) 1 µg/mL.



## VPS53 Antibody 2

Immunocytochemistry of VPS53 in 293 cells with VPS53 antibody at 5 µg/mL.



## VPS53 Antibody 3

Immunofluorescence of VPS53 in 293 cells with VPS53 antibody at 2.5 µg/mL.

## Disclaimer

### Disclaimer

Optimal dilutions/concentrations should be determined by the end user. The information provided is a guideline for product use. This product is for research use only.

For research use only. For additional information, visit ProSci's [Terms and Conditions Page](#).