

RGPD5 Antibody

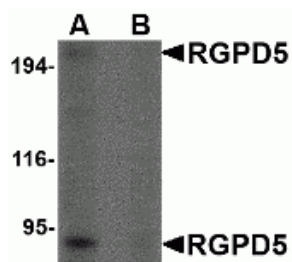
CATALOG NUMBER: 4587

Specifications

Host Species	Rabbit
Species Reactivity	Human
Immunogen	RGPD5 antibody was raised against a 23 amino acid synthetic peptide from near the center of human RGPD5. The immunogen is located within amino acids 1130 - 1180 of RGPD5.
Conjugate	Unconjugated
Tested Applications	ELISA, WB
User Note	Optimal dilutions for each application to be determined by the researcher.

Properties

Purification	RGPD5 Antibody is affinity chromatography purified via peptide column.
Clonality	Polyclonal
Isotype	IgG
Physical State	Liquid
Buffer	RGPD5 Antibody is supplied in PBS containing 0.02% sodium azide.
Concentration	1 mg/mL
Storage Conditions	RGPD5 antibody can be stored at 4°C for three months and -20°C, stable for up to one year. As with all antibodies care should be taken to avoid repeated freeze thaw cycles. Antibodies should not be exposed to prolonged high temperatures.



RGPD5 Antibody 1

Western blot analysis of RGD5 in human thymus tissue lysate with RGD5 antibody at 1 $\mu\text{g/mL}$ in (A) the absence and (B) the presence of blocking peptide.

Disclaimer

Disclaimer

Optimal dilutions/concentrations should be determined by the end user. The information provided is a guideline for product use. This product is for research use only.

For research use only. For additional information, visit ProSci's [Terms and Conditions Page](#).