



ProSci Incorporated
12170 Flint Place
Poway, CA 92064, USA
prosci-inc.com

P: +1 (888) 513-9525
Local: +1 (858) 513-2638
Fax: +1 (858) 513-2692

customercare@prosci-inc.com
techsupport@prosci-inc.com

TRIM5 alpha Antibody

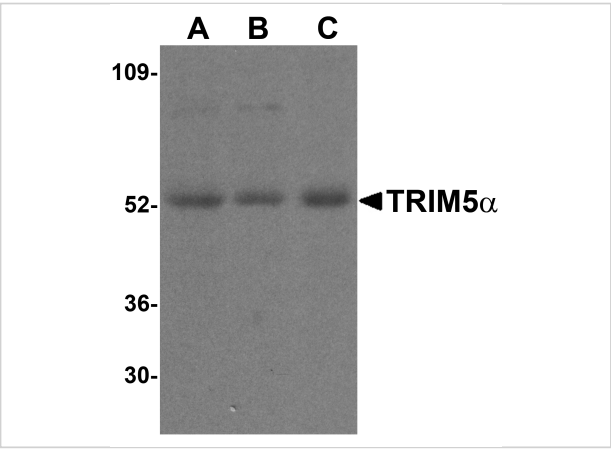
CATALOG NUMBER: 3251

Specifications

Host Species	Rabbit
Species Reactivity	Human
Immunogen	TRIM5 alpha antibody was raised against a synthetic peptide corresponding to 19 amino acids near the center of rhesus monkey TRIM5 alpha. The immunogen is located within amino acids 390 - 440 of TRIM5 alpha.
Conjugate	Unconjugated
Tested Applications	ELISA, IHC-P, WB
User Note	Optimal dilutions for each application to be determined by the researcher.
Specificity	TRIM5 alpha antibody will not cross-react with other isoforms of TRIM5.
Predicted Molecular Weight	Predicted: 54 kDa Observed: 54 kDa

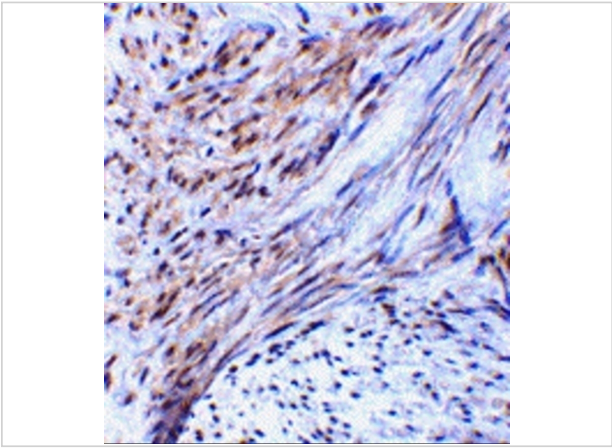
Properties

Purification	TRIM5 alpha Antibody is affinity chromatography purified via peptide column.
Clonality	Polyclonal
Isotype	IgG
Physical State	Liquid
Buffer	TRIM5 alpha Antibody is supplied in PBS containing 0.02% sodium azide.
Concentration	1 mg/mL
Storage Conditions	TRIM5 alpha antibody can be stored at 4°C for three months and -20°C, stable for up to one year. As with all antibodies care should be taken to avoid repeated freeze thaw cycles. Antibodies should not be exposed to prolonged high temperatures.



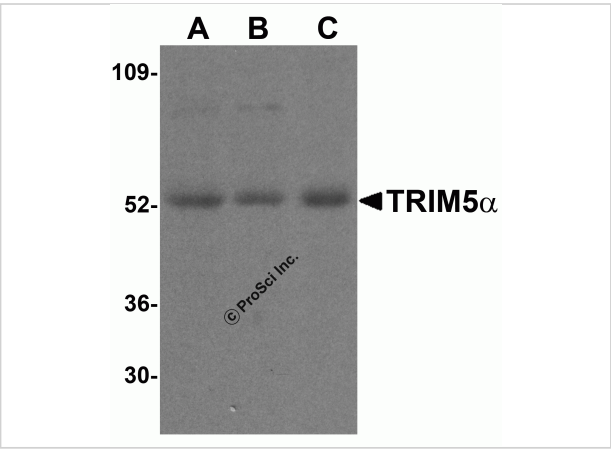
TRIM5 alpha Antibody 1

Western blot analysis of TRIM5 alpha expression in human stomach (A), thymus (B), and uterus (C) cell lysate with TRIM5 alpha antibody at 2 µg/mL.



TRIM5 alpha Antibody 2

Immunohistochemistry of TRIM5 alpha in human uterus tissue with TRIM5 alpha antibody at 2 µg/mL.



TRIM5 alpha Antibody 3

TRIM5 alpha Antibody

Disclaimer

Disclaimer	Optimal dilutions/concentrations should be determined by the end user. The information provided is a guideline for product use. This product is for research use only.
------------	--

For research use only. For additional information, visit ProSci's [Terms and Conditions Page](#).