

## TRIM5 delta Antibody

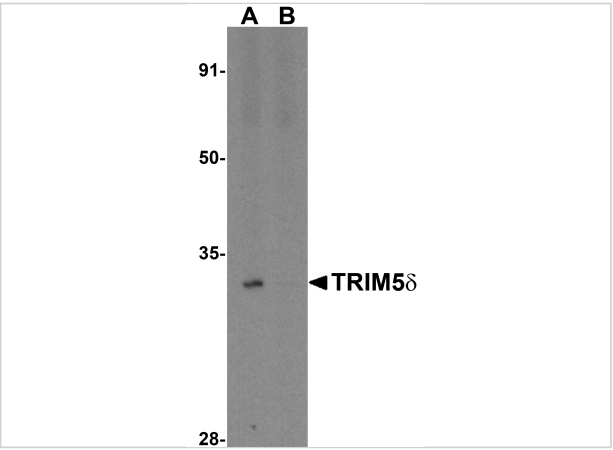
CATALOG NUMBER: 3241

### Specifications

Host Species	Rabbit
Species Reactivity	Human
Immunogen	TRIM5 delta antibody was raised against a synthetic peptide corresponding to 13 amino acids near the carboxy terminus of human TRIM5 delta. The immunogen is located within the last 50 amino acids of TRIM5 delta.
Conjugate	Unconjugated
Tested Applications	ELISA, IF, IHC-P, WB
User Note	Optimal dilutions for each application to be determined by the researcher.
Predicted Molecular Weight	Predicted: 36 kDa Observed: 33 kDa

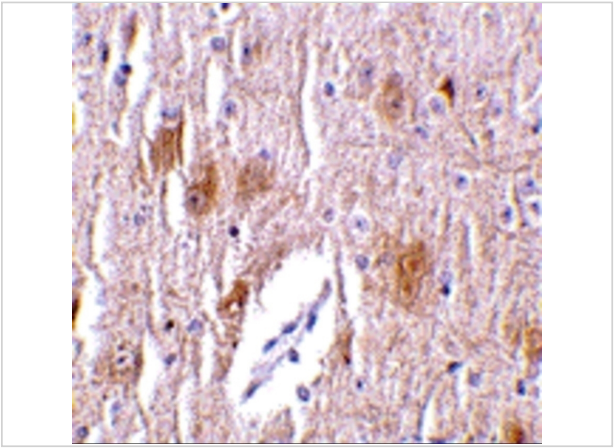
### Properties

Purification	TRIM5 delta Antibody is affinity chromatography purified via peptide column.
Clonality	Polyclonal
Isotype	IgG
Physical State	Liquid
Buffer	TRIM5 delta Antibody is supplied in PBS containing 0.02% sodium azide.
Concentration	1 mg/mL
Storage Conditions	TRIM5 delta antibody can be stored at 4°C for three months and -20°C, stable for up to one year. As with all antibodies care should be taken to avoid repeated freeze thaw cycles. Antibodies should not be exposed to prolonged high temperatures.



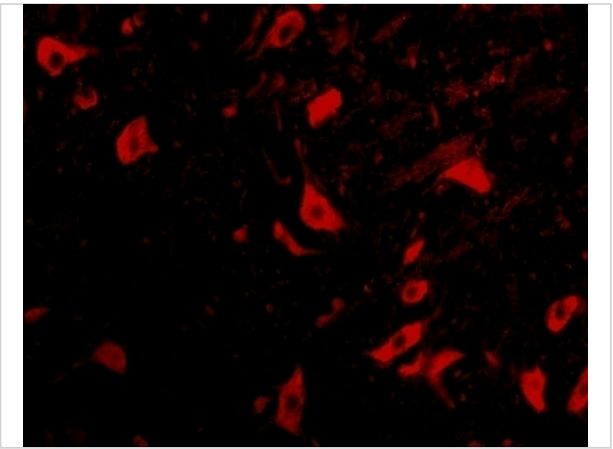
TRIM5 delta Antibody 1

Western blot analysis of TRIM5 delta in human kidney tissue lysate with TRIM5 delta antibody at 1 µg/ml in (A) the absence and (B) the presence of blocking peptide.



TRIM5 delta Antibody 2

Immunohistochemistry of TRIM5 delta in mouse brain tissue with TRIM5 delta antibody at 1 µg/mL.



TRIM5 delta Antibody 3

Immunofluorescence of TRIM5 delta in mouse brain tissue with TRIM5 delta antibody at 10 µg/mL.

Disclaimer

Disclaimer	Optimal dilutions/concentrations should be determined by the end user. The information provided is a guideline for product use. This product is for research use only.
------------	--

For research use only. For additional information, visit ProSci's [Terms and Conditions Page](#).