

## TRIM5 gamma Antibody

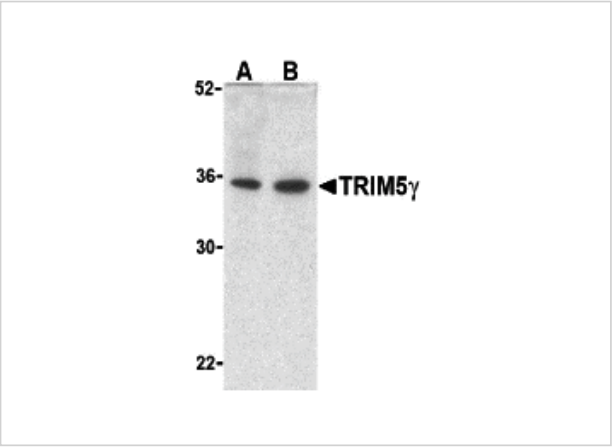
CATALOG NUMBER: 3239

### Specifications

Host Species	Rabbit
Species Reactivity	Human
Immunogen	TRIM5 gamma antibody was raised against a synthetic peptide corresponding to 15 amino acids near the carboxy terminus of human TRIM5 gamma. The immunogen is located within the last 50 amino acids of TRIM5 gamma.
Conjugate	Unconjugated
Tested Applications	ELISA, IF, IHC-P, WB
User Note	Optimal dilutions for each application to be determined by the researcher.

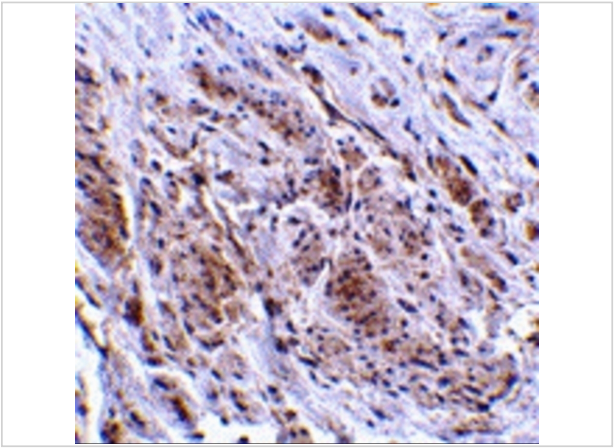
### Properties

Purification	TRIM5 gamma Antibody is affinity chromatography purified via peptide column.
Clonality	Polyclonal
Isotype	IgG
Physical State	Liquid
Buffer	TRIM5 gamma Antibody is supplied in PBS containing 0.02% sodium azide.
Concentration	1 mg/mL
Storage Conditions	TRIM5 gamma antibody can be stored at 4°C for three months and -20°C, stable for up to one year. As with all antibodies care should be taken to avoid repeated freeze thaw cycles. Antibodies should not be exposed to prolonged high temperatures.



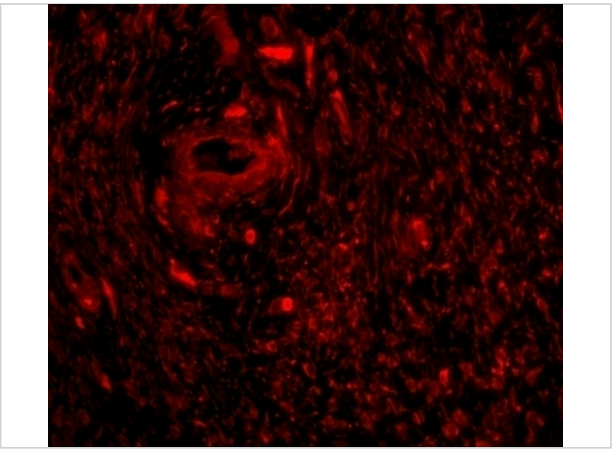
**TRIM5 gamma Antibody 1**

Western blot analysis of TRIM5 gamma expression in human bladder (A) and colon (B) cell lysate with TRIM5 gamma antibody at 2 µg/ml.



**TRIM5 gamma Antibody 2**

Immunohistochemistry of TRIM5 gamma in human bladder tissue with TRIM5 gamma antibody at 2 µg/mL.



**TRIM5 gamma Antibody 3**

Immunofluorescence of TRIM5 gamma in human bladder tissue with TRIM5 gamma antibody at 20 µg/mL.

**Disclaimer**

<b>Disclaimer</b>	Optimal dilutions/concentrations should be determined by the end user. The information provided is a guideline for product use. This product is for research use only.
-------------------	--

For research use only. For additional information, visit ProSci's [Terms and Conditions Page](#).