

Slitrk4 Antibody

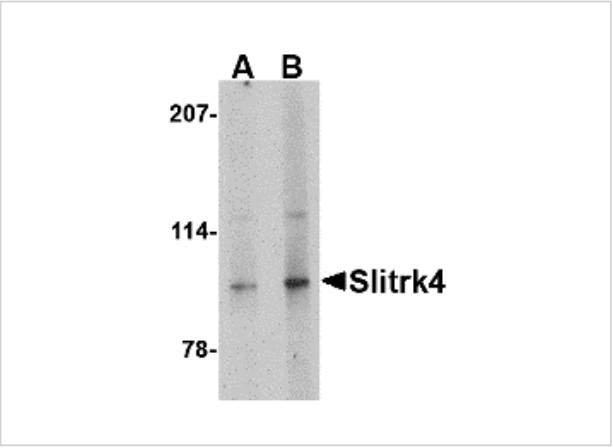
CATALOG NUMBER: 4483

Specifications

| | |
|---------------------|---|
| Host Species | Rabbit |
| Species Reactivity | Human, Mouse, Rat |
| Immunogen | Slitrk4 antibody was raised against a 13 amino acid synthetic peptide from near the carboxy terminus of human Slitrk4. The immunogen is located within amino acids 760 - 810 of Slitrk4. |
| Conjugate | Unconjugated |
| Tested Applications | ELISA, IF, IHC-P, WB |
| User Note | Optimal dilutions for each application to be determined by the researcher. |
| Specificity | This antibody is predicted to have no cross-reactivity to other Slitrk proteins. |

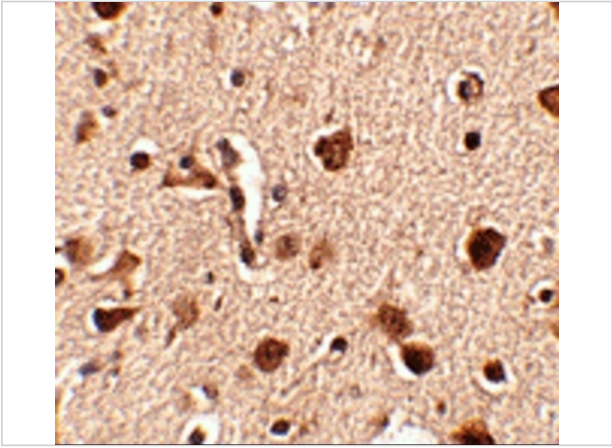
Properties

| | |
|--------------------|---|
| Purification | Slitrk4 Antibody is affinity chromatography purified via peptide column. |
| Clonality | Polyclonal |
| Isotype | IgG |
| Physical State | Liquid |
| Buffer | Slitrk4 Antibody is supplied in PBS containing 0.02% sodium azide. |
| Concentration | 1 mg/mL |
| Storage Conditions | Slitrk4 antibody can be stored at 4°C for three months and -20°C, stable for up to one year. As with all antibodies care should be taken to avoid repeated freeze thaw cycles. Antibodies should not be exposed to prolonged high temperatures. |



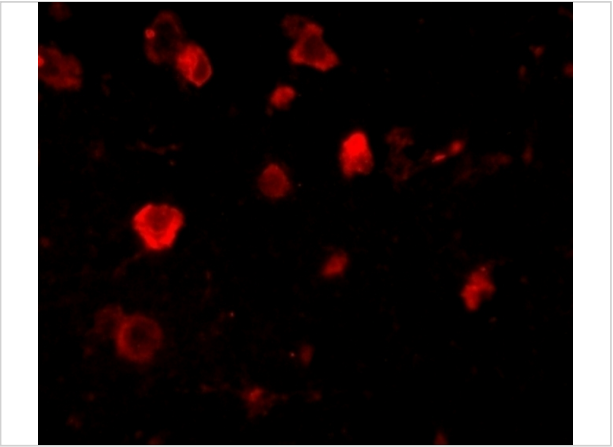
Slitrk4 Antibody 1

Western blot analysis of Slitrk4 in mouse brain tissue lysate with Slitrk4 antibody at (A) 0.5 and (B) 1 µg/mL.



Slitrk4 Antibody 2

Immunohistochemistry of Slitrk4 in human brain tissue with Slitrk4 antibody at 2.5 µg/mL.



Slitrk4 Antibody 3

Immunofluorescence of slitrk4 in human brain tissue with slitrk4 antibody at 20 µg/mL.

Disclaimer

| | |
|-------------------|--|
| Disclaimer | Optimal dilutions/concentrations should be determined by the end user. The information provided is a guideline for product use. This product is for research use only. |
|-------------------|--|

For research use only. For additional information, visit ProSci's [Terms and Conditions Page](#).