



ProSci Incorporated
12170 Flint Place
Poway, CA 92064, USA
prosci-inc.com

P: +1 (888) 513-9525
Local: +1 (858) 513-2638
Fax: +1 (858) 513-2692

customercare@prosci-inc.com
techsupport@prosci-inc.com

SARS-CoV Spike Antibody

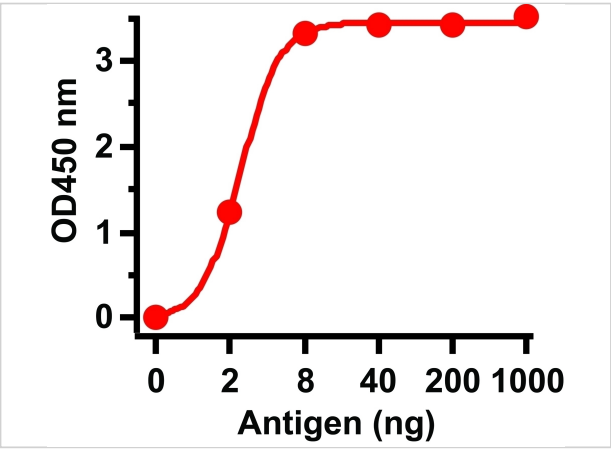
CATALOG NUMBER: 3223

Specifications

Host Species	Rabbit
Species Reactivity	Virus
Homology	Predicted reactivity based on immunogen sequence: SARS-CoV2 Spike protein: (identity 65%, homology 88%)
Immunogen	Anti-SARS-CoV Spike antibody (3223) was raised against a peptide corresponding to 17 amino acids near the center of SARS-CoV Spike glycoprotein. The immunogen is located within amino acids 550-600 of SARS-CoV Spike.
Conjugate	Unconjugated
Tested Applications	ELISA
User Note	Optimal dilutions for each application to be determined by the researcher.

Properties

Purification	SARS-CoV Spike Antibody is affinity chromatography purified via peptide column.
Clonality	Polyclonal
Isotype	IgG
Physical State	Liquid
Buffer	SARS-CoV Spike Antibody is supplied in PBS containing 0.02% sodium azide.
Concentration	1 mg/mL
Storage Conditions	SARS-CoV Spike antibody can be stored at 4°C up to one year. Antibodies should not be exposed to prolonged high temperatures.



SARS-CoV Spike Antibody 1

Figure 1 ELISA Test
Antibodies: SARS-CoV Spike Antibody, 3223 (1 µg/mL). A direct ELISA was performed using immunogen as coating antigen and the anti-SARS-CoV Spike antibody a...

Disclaimer

Disclaimer	Optimal dilutions/concentrations should be determined by the end user. The information provided is a guideline for product use. This product is for research use only.
------------	--

For research use only. For additional information, visit ProSci's [Terms and Conditions Page](#).