

SCRAPPER Antibody

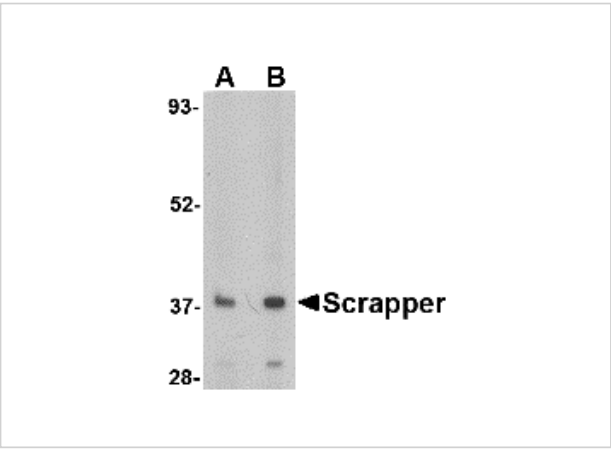
CATALOG NUMBER: 4451

Specifications

Host Species	Rabbit
Species Reactivity	Human, Mouse, Rat
Homology	Predicted species reactivity based on immunogen sequence: Bovine: (100%)
Immunogen	SCRAPPER antibody was raised against a 18 amino acid synthetic peptide near the amino terminus of the human SCRAPPER. The immunogen is located within the first 50 amino acids of SCRAPPER.
Conjugate	Unconjugated
Tested Applications	ELISA, IF, IHC-P, WB
User Note	Optimal dilutions for each application to be determined by the researcher.

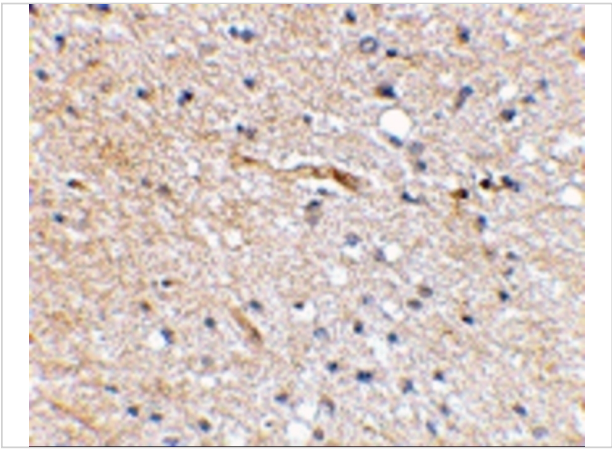
Properties

Purification	SCRAPPER Antibody is affinity chromatography purified via peptide column.
Clonality	Polyclonal
Isotype	IgG
Physical State	Liquid
Buffer	SCRAPPER Antibody is supplied in PBS containing 0.02% sodium azide.
Concentration	1 mg/mL
Storage Conditions	SCRAPPER antibody can be stored at 4°C for three months and -20°C, stable for up to one year. As with all antibodies care should be taken to avoid repeated freeze thaw cycles. Antibodies should not be exposed to prolonged high temperatures.



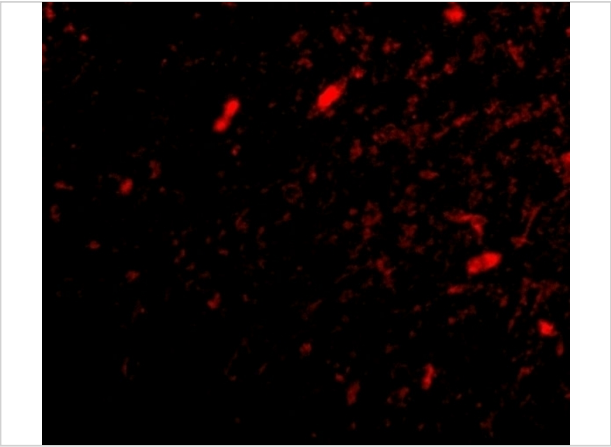
SCRAPPER Antibody 1

Western blot analysis of SCRAPER in A20 cell lysate with SCRAPPER antibody at (A) 0.5 and (B) 1 µg/mL.



SCRAPPER Antibody 2

Immunohistochemical staining of human brain tissue using Scraper antibody at 2.5 µg/mL.



SCRAPPER Antibody 3

Immunofluorescence of scraper in human brain tissue with scraper antibody at 20 µg/mL.

Disclaimer

Disclaimer	Optimal dilutions/concentrations should be determined by the end user. The information provided is a guideline for product use. This product is for research use only.
------------	--

For research use only. For additional information, visit ProSci's [Terms and Conditions Page](#).