

ATG5 Antibody

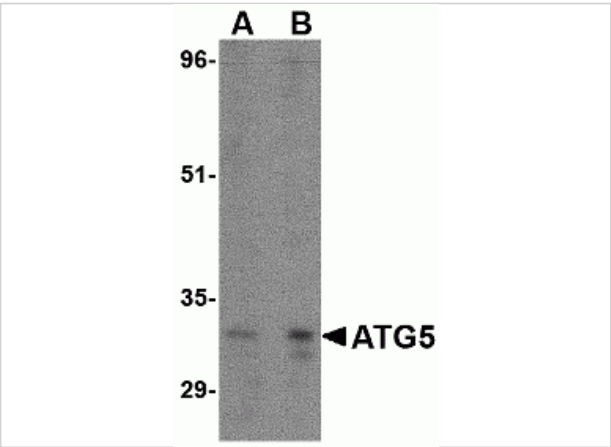
CATALOG NUMBER: 4441

Specifications

Host Species	Rabbit
Species Reactivity	Human, Mouse, Rat
Homology	Predicted species reactivity based on immunogen sequence: Bovine: (94%), Pig: (94%)
Immunogen	ATG5 antibody was raised against a 16 amino acid synthetic peptide from near the amino terminus of human ATG5. The immunogen is located within the first 50 amino acids of ATG5.
Conjugate	Unconjugated
Tested Applications	ELISA, IF, IHC-P, WB
User Note	Optimal dilutions for each application to be determined by the researcher.
Specificity	Three isoforms of ATG5 are known to exist; this ATG5 antibody will only detect the longest isoform.

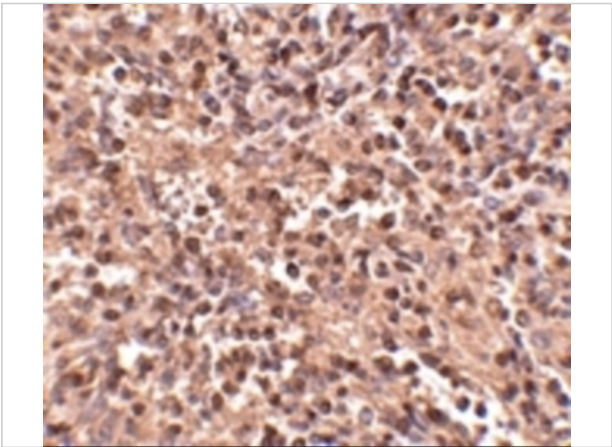
Properties

Purification	ATG5 Antibody is affinity chromatography purified via peptide column.
Clonality	Polyclonal
Isotype	IgG
Physical State	Liquid
Buffer	ATG5 Antibody is supplied in PBS containing 0.02% sodium azide.
Concentration	1 mg/mL
Storage Conditions	ATG5 antibody can be stored at 4°C for three months and -20°C, stable for up to one year. As with all antibodies care should be taken to avoid repeated freeze thaw cycles. Antibodies should not be exposed to prolonged high temperatures.



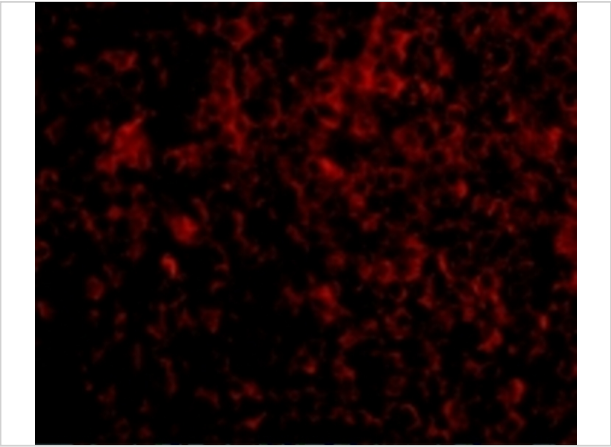
ATG5 Antibody 1

Western blot analysis of ATG5 in rat spleen tissue lysate with ATG5 antibody at (A) 1 and (B) 2 µg/mL.



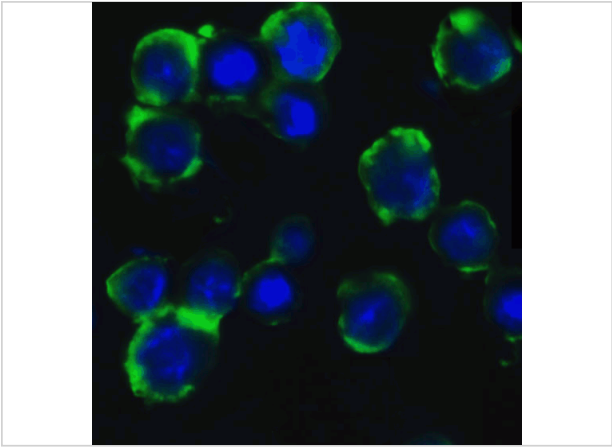
ATG5 Antibody 2

Immunohistochemistry of ATG5 in human spleen tissue with ATG5 antibody at 2.5 µg/mL.



ATG5 Antibody 3

Immunofluorescence of ATG5 in Human Spleen cells with ATG5 antibody at 20 µg/mL.



ATG5 Antibody 4

Immunofluorescence of ATG5 in HeLa cells with ATG5 Antibody at 5 µg/mL.

Disclaimer

Disclaimer	Optimal dilutions/concentrations should be determined by the end user. The information provided is a guideline for product use. This product is for research use only.
------------	--

For research use only. For additional information, visit ProSci's [Terms and Conditions Page](#).