

## Grik1 Antibody

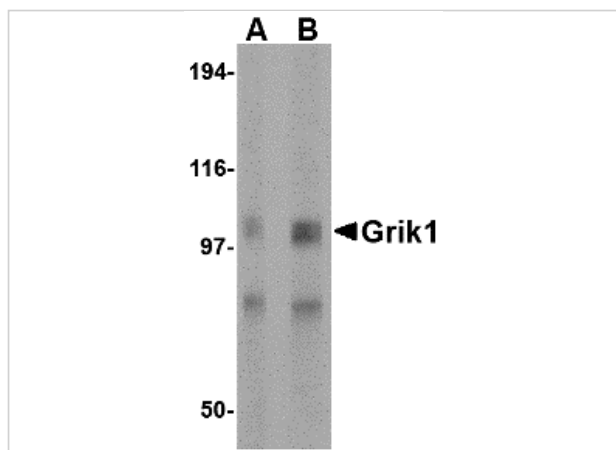
CATALOG NUMBER: 4383

### Specifications

Host Species	Rabbit
Species Reactivity	Human, Mouse, Rat
Immunogen	Grik1 antibody was raised against a 16 amino acid synthetic peptide near the center of the human Grik1. The immunogen is located within amino acids 380 - 430 of Grik1.
Conjugate	Unconjugated
Tested Applications	ELISA, IF, IHC-P, WB
User Note	Optimal dilutions for each application to be determined by the researcher.

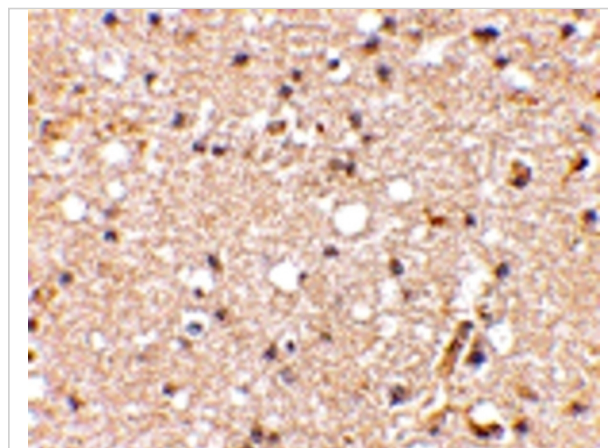
### Properties

Purification	Grik1 Antibody is affinity chromatography purified via peptide column.
Clonality	Polyclonal
Isotype	IgG
Physical State	Liquid
Buffer	Grik1 Antibody is supplied in PBS containing 0.02% sodium azide.
Concentration	1 mg/mL
Storage Conditions	Grik1 antibody can be stored at 4°C for three months and -20°C, stable for up to one year. As with all antibodies care should be taken to avoid repeated freeze thaw cycles. Antibodies should not be exposed to prolonged high temperatures.



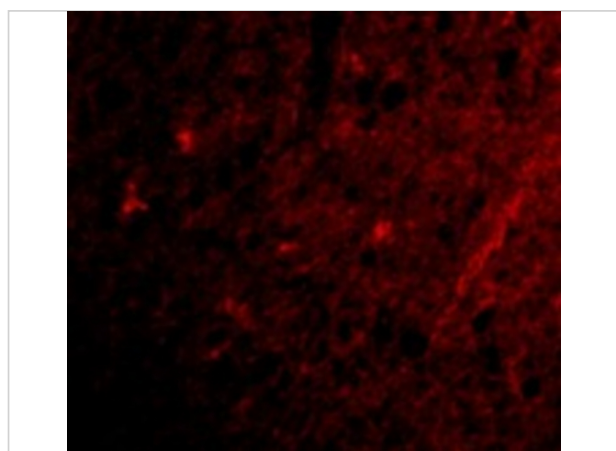
### Grik1 Antibody 1

Western blot analysis of Grik1 in rat brain tissue lysate with Grik1 antibody at (A) 0.5 and (B) 1  $\mu\text{g/mL}$ .



### Grik1 Antibody 2

Immunohistochemical staining of human brain tissue using Grik1 antibody at 2.5  $\mu\text{g/mL}$ .



### Grik1 Antibody 3

Immunofluorescence of Grik1 in Human Brain cells with Grik1 antibody at 20  $\mu\text{g/mL}$ .

## Disclaimer

#### Disclaimer

Optimal dilutions/concentrations should be determined by the end user. The information provided is a guideline for product use. This product is for research use only.

For research use only. For additional information, visit ProSci's [Terms and Conditions Page](#).