

## TEM1 Antibody

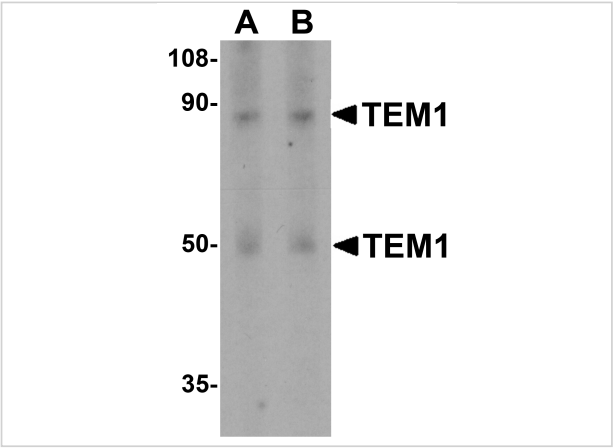
CATALOG NUMBER: 4357

### Specifications

Host Species	Rabbit
Species Reactivity	Human
Homology	Predicted species reactivity based on immunogen sequence: Mouse (86%); Rat: (86%)
Immunogen	Anti-TEM-1 antibody ( <b>4357</b> ) was raised against a peptide corresponding to 14 amino acids near the carboxy terminus of human TEM-1. The immunogen is located within the last 50 amino acids of TEM-1.
Conjugate	Unconjugated
Tested Applications	ELISA, IF, IHC-P, WB
User Note	Optimal dilutions for each application to be determined by the researcher.
Specificity	At least two isoforms of TEM1 are known to exist; this antibody recognizes both isoforms.
Predicted Molecular Weight	Predicted: 81kD and 46kD Observed: 90 kD (post-modifications: 27 O-linked glycosylations) and 46kD

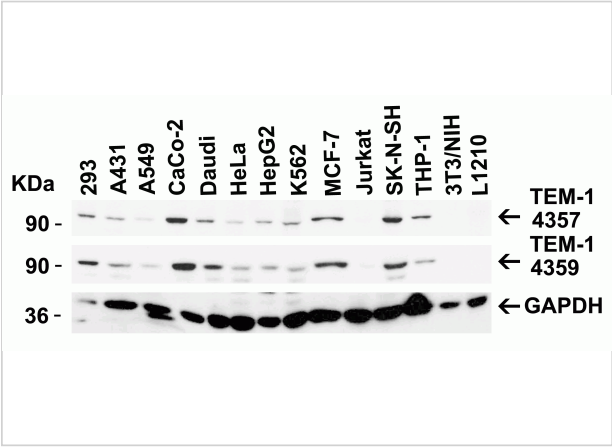
### Properties

Purification	TEM1 Antibody is affinity chromatography purified via peptide column.
Clonality	Polyclonal
Isotype	IgG
Physical State	Liquid
Buffer	TEM1 Antibody is supplied in PBS containing 0.02% sodium azide.
Concentration	1 mg/mL
Storage Conditions	TEM1 antibody can be stored at 4°C up to one year. Antibodies should not be exposed to prolonged high temperatures.



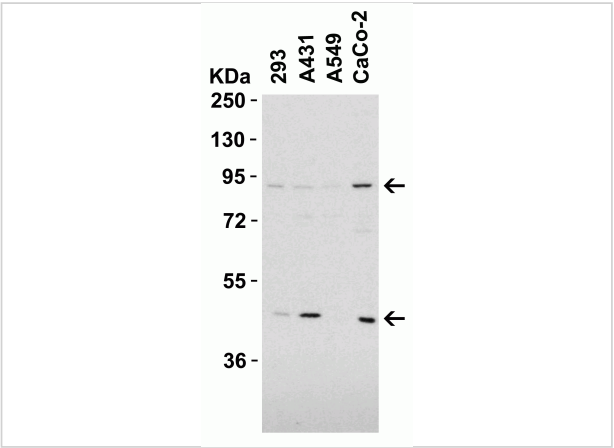
TEM1 Antibody 1

**Figure 1 Western Blot Validation in Human Colon Tissue**  
Loading: 15 µg of lysates per lane. Antibodies: TEM-1 4357, (A, 0.5 µg/mL; B, 1 µg/mL), 1h incubation at RT in 5% NFDM/TBS...



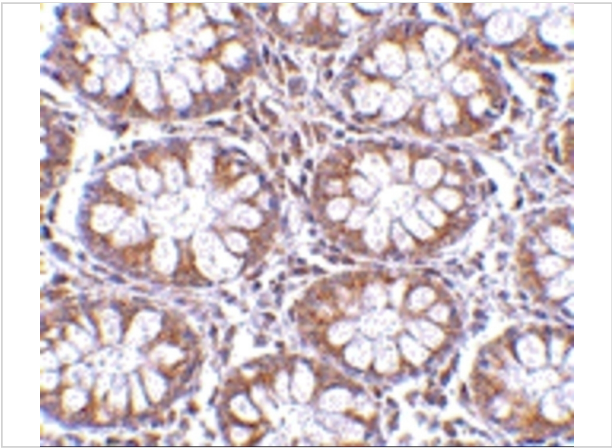
TEM1 Antibody 2

**Figure 2 Independent Antibody Validation (IAV) via Protein Expression Profile in Cell Lines**  
Loading: 15 µg of lysates per lane. Antibodies: TEM-1 4357, (2 µg/mL), TEM-1 4359, (1 µg/mL), 1h incubation at RT in 5% NFDM/TBS...



TEM1 Antibody 3

**Figure 3 Western Blot Validation in Human Cell Lines**  
Loading: 15 µg of lysates per lane. Antibodies: TEM-1 4357, (2 µg/mL), 1h incubation at RT in 5% NFDM/TBST. Secondary: Goat anti-mouse IgG (1:1000), 1h incubation at RT in 5% NFDM/TBST...



TEM1 Antibody 4

**Figure 4 Immunohistochemistry Validation of TEM-1 in Human Colon Tissue**  
Immunohistochemical analysis of paraffin-embedded Human Colon tissue using anti-TEM-1 antibody (4357) at 1:1000 dilution, 1h incubation at RT in 5% NFDM/TBST...

Disclaimer

Disclaimer	Optimal dilutions/concentrations should be determined by the end user. The information provided is a guideline for product use. This product is for research use only.
------------	------------------------------------------------------------------------------------------------------------------------------------------------------------------------

For research use only. For additional information, visit ProSci's [Terms and Conditions Page](#).