

BRCC45 Antibody

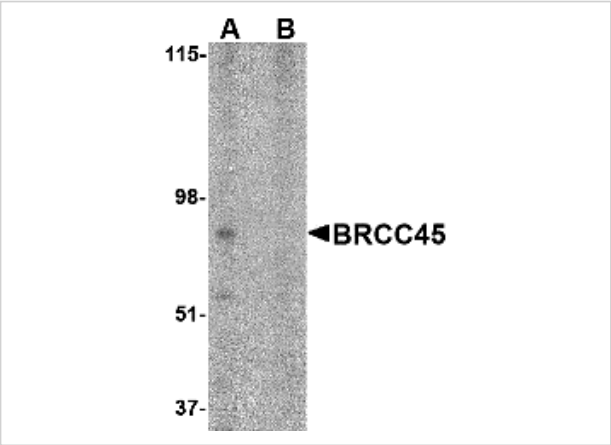
CATALOG NUMBER: 4329

Specifications

Host Species	Rabbit
Species Reactivity	Human, Mouse, Rat
Homology	Predicted species reactivity based on immunogen sequence: Bovine: (100%), Chicken: (100%)
Immunogen	BRCC45 antibody was raised against a 18 amino acid synthetic peptide from near the amino terminus of human BRCC45. The immunogen is located within the last 50 amino acids of BRCC45.
Conjugate	Unconjugated
Tested Applications	ELISA, IF, IHC-P, WB
User Note	Optimal dilutions for each application to be determined by the researcher.

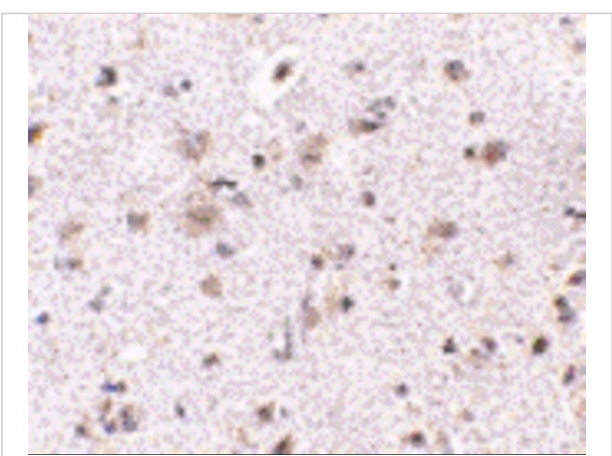
Properties

Purification	BRCC45 Antibody is affinity chromatography purified via peptide column.
Clonality	Polyclonal
Isotype	IgG
Physical State	Liquid
Buffer	BRCC45 Antibody is supplied in PBS containing 0.02% sodium azide.
Concentration	1 mg/mL
Storage Conditions	BRCC45 antibody can be stored at 4°C for three months and -20°C, stable for up to one year. As with all antibodies care should be taken to avoid repeated freeze thaw cycles. Antibodies should not be exposed to prolonged high temperatures.



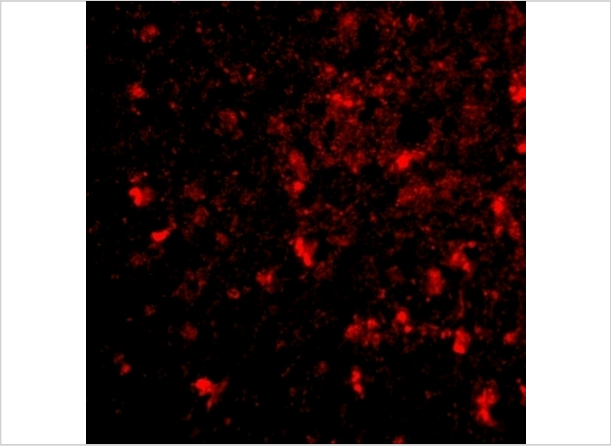
BRCC45 Antibody 1

Western blot analysis of BRCC45 in HeLa cell lysate in (A) the absence and (B) presence of blocking peptide with BRCC45 antibody at 1 µg/mL.



BRCC45 Antibody 2

Immunohistochemistry of BRCC45 in human brain tissue with BRCC45 antibody at 2.5 µg/mL.



BRCC45 Antibody 3

Immunofluorescence of BRCC45 in human brain tissue with BRCC45 antibody at 20 µg/mL.

Disclaimer

Disclaimer	Optimal dilutions/concentrations should be determined by the end user. The information provided is a guideline for product use. This product is for research use only.
-------------------	--

For research use only. For additional information, visit ProSci's [Terms and Conditions Page](#).