

RAP80 Antibody

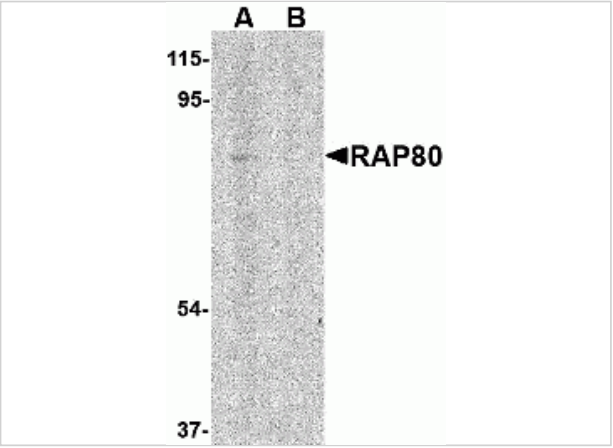
CATALOG NUMBER: 4327

Specifications

Host Species	Rabbit
Species Reactivity	Human, Mouse
Homology	Predicted species reactivity based on immunogen sequence: Pig: (100%), Rat: (88%)
Immunogen	RAP80 antibody was raised against a 17 amino acid synthetic peptide from near the amino terminus of human RAP80. The immunogen is located within amino acids 30 - 80 of RAP80.
Conjugate	Unconjugated
Tested Applications	ELISA, IF, IHC-P, WB
User Note	Optimal dilutions for each application to be determined by the researcher.

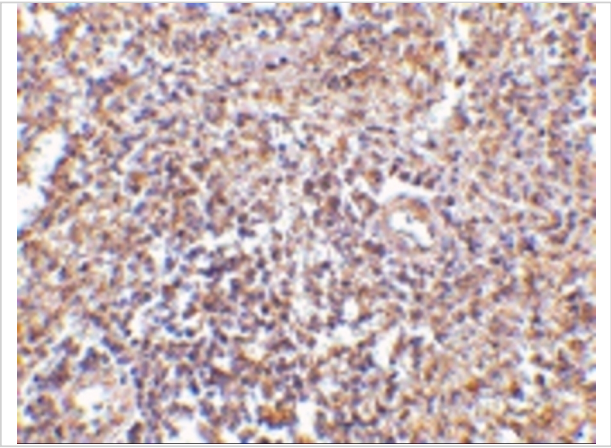
Properties

Purification	RAP80 Antibody is affinity chromatography purified via peptide column.
Clonality	Polyclonal
Isotype	IgG
Physical State	Liquid
Buffer	RAP80 Antibody is supplied in PBS containing 0.02% sodium azide.
Concentration	1 mg/mL
Storage Conditions	RAP80 antibody can be stored at 4°C for three months and -20°C, stable for up to one year. As with all antibodies care should be taken to avoid repeated freeze thaw cycles. Antibodies should not be exposed to prolonged high temperatures.



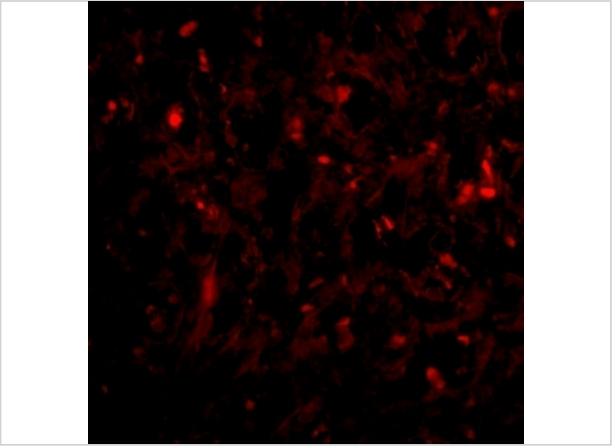
RAP80 Antibody 1

Western blot analysis of RAP80 in 293 cell lysate in (A) the absence and (B) presence of blocking peptide with RAP80 antibody at 1 µg/mL.



RAP80 Antibody 2

Immunohistochemistry of RAP80 in human spleen tissue with RAP80 antibody at 2.5 µg/mL.



RAP80 Antibody 3

Immunofluorescence of RAP80 in human spleen tissue with RAP80 antibody at 20 µg/mL.

Disclaimer

Disclaimer	Optimal dilutions/concentrations should be determined by the end user. The information provided is a guideline for product use. This product is for research use only.
-------------------	--

For research use only. For additional information, visit ProSci's [Terms and Conditions Page](#).