

CARMA1 Antibody

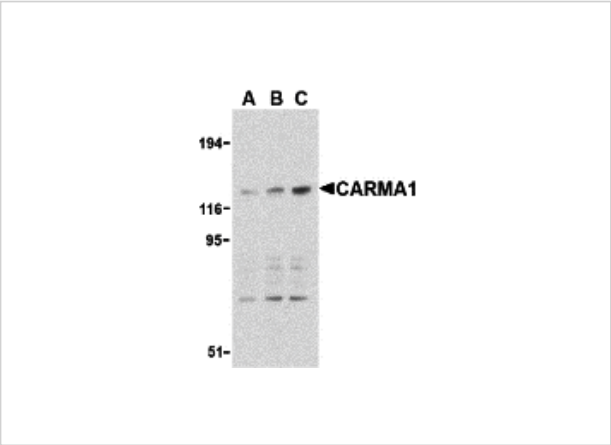
CATALOG NUMBER: 3189

Specifications

Host Species	Rabbit
Species Reactivity	Human, Mouse
Immunogen	CARMA1 antibody was raised against a synthetic peptide corresponding to amino acids at the C-terminus of human CARMA1. The immunogen is located within the last 50 amino acids of CARMA1.
Conjugate	Unconjugated
Tested Applications	ELISA, IF, IHC-P, WB
User Note	Optimal dilutions for each application to be determined by the researcher.

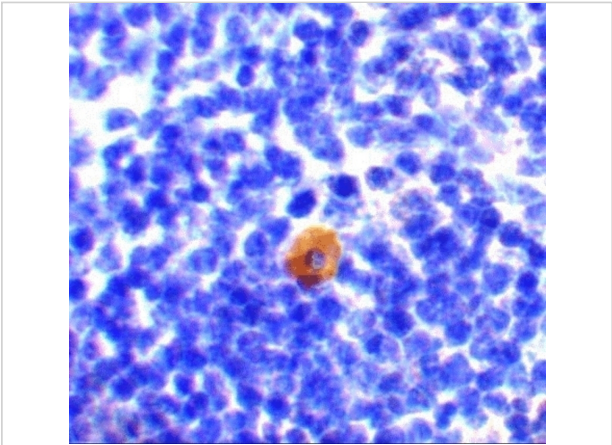
Properties

Purification	CARMA1 Antibody is affinity chromatography purified via peptide column.
Clonality	Polyclonal
Isotype	IgG
Physical State	Liquid
Buffer	CARMA1 Antibody is supplied in PBS containing 0.02% sodium azide.
Concentration	1 mg/mL
Storage Conditions	CARMA1 antibody can be stored at 4°C for three months and -20°C, stable for up to one year. As with all antibodies care should be taken to avoid repeated freeze thaw cycles. Antibodies should not be exposed to prolonged high temperatures.



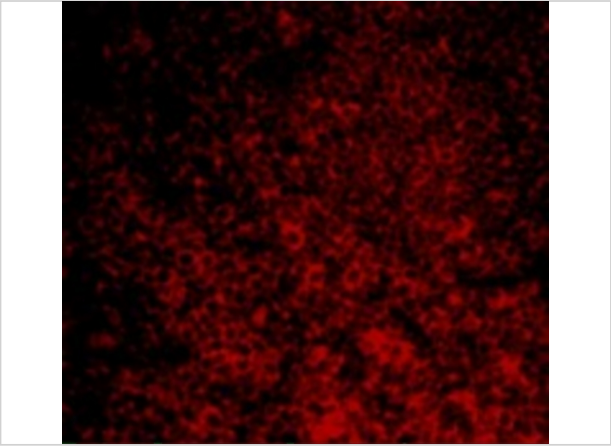
CARMA1 Antibody 1

Western blot analysis of CARMA1 expression in mouse thymus cell lysate with CARMA1 antibody at 0.5 (lane A), 1 (lane B), and 2 $\mu\text{g/ml}$ (lane C), respectively.



CARMA1 Antibody 2

Immunohistochemistry of CARMA1 in mouse thymus with CARMA1 antibody at 10 $\mu\text{g/mL}$.



CARMA1 Antibody 3

Immunofluorescence of CARMA1 in Mouse Spleen cells with CARMA1 antibody at 20 $\mu\text{g/mL}$.

Disclaimer

Disclaimer	Optimal dilutions/concentrations should be determined by the end user. The information provided is a guideline for product use. This product is for research use only.
------------	------------------------------------------------------------------------------------------------------------------------------------------------------------------------

For research use only. For additional information, visit ProSci's [Terms and Conditions Page](#).