

TRIM25 Antibody

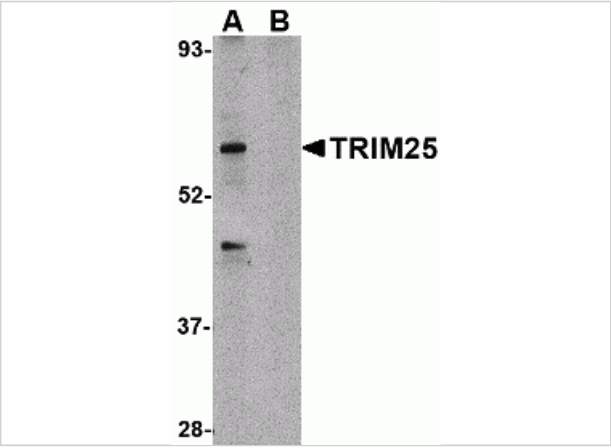
CATALOG NUMBER: 4315

Specifications

Host Species	Rabbit
Species Reactivity	Human, Mouse
Immunogen	TRIM25 antibody was raised against a 19 amino acid synthetic peptide from near the carboxy terminus of human TRIM25. The immunogen is located within amino acids 520 - 570 of TRIM25.
Conjugate	Unconjugated
Tested Applications	ELISA, ICC, IF, WB
User Note	Optimal dilutions for each application to be determined by the researcher.

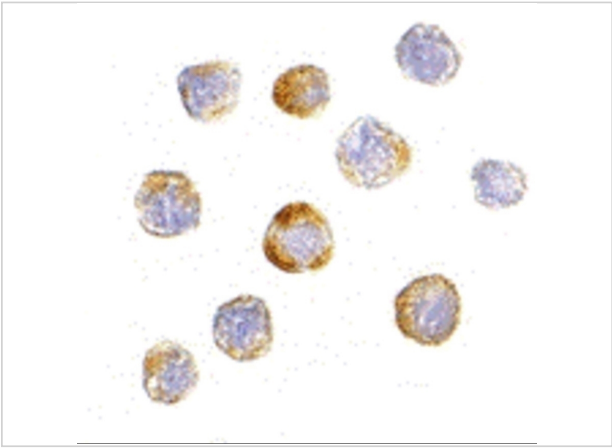
Properties

Purification	TRIM25 Antibody is affinity chromatography purified via peptide column.
Clonality	Polyclonal
Isotype	IgG
Physical State	Liquid
Buffer	TRIM25 Antibody is supplied in PBS containing 0.02% sodium azide.
Concentration	1 mg/mL
Storage Conditions	TRIM25 antibody can be stored at 4°C for three months and -20°C, stable for up to one year. As with all antibodies care should be taken to avoid repeated freeze thaw cycles. Antibodies should not be exposed to prolonged high temperatures.



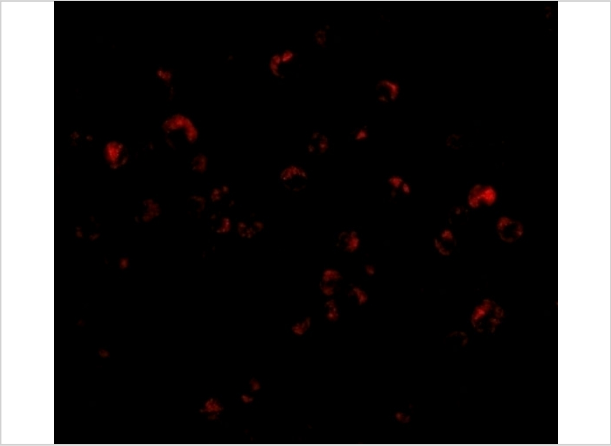
TRIM25 Antibody 1

Western blot analysis of TRIM25 in HeLa cell lysate in (A) the absence and (B) presence of blocking peptide with TRIM25 antibody at 1 µg/mL.



TRIM25 Antibody 2

Immunocytochemistry of TRIM25 in HeLa cells with TRIM25 antibody at 20 µg/mL.



TRIM25 Antibody 3

Immunofluorescence of TRIM25 in HeLa cells with TRIM25 antibody at 20 µg/mL.

Disclaimer

Disclaimer	Optimal dilutions/concentrations should be determined by the end user. The information provided is a guideline for product use. This product is for research use only.
------------	--

For research use only. For additional information, visit ProSci's [Terms and Conditions Page](#).