

TRIF Antibody

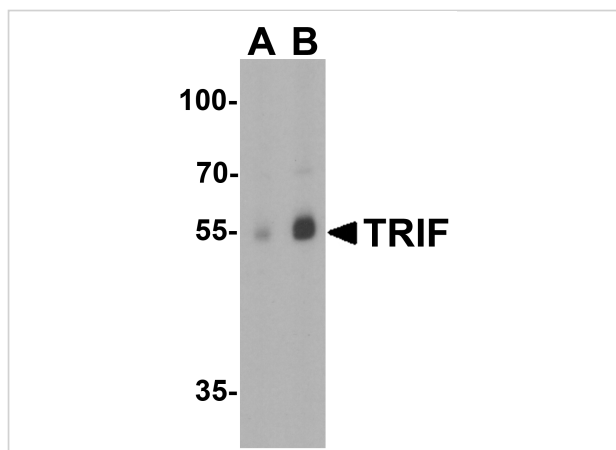
CATALOG NUMBER: 3173

Specifications

Host Species	Rabbit
Species Reactivity	Human
Immunogen	TRIF antibody was raised against a peptide corresponding to 14 amino acids near the C-terminus of human TRIF. The immunogen is located within the last 50 amino acids of TRIF.
Conjugate	Unconjugated
Tested Applications	ELISA, IF, IHC-P, WB
User Note	Optimal dilutions for each application to be determined by the researcher.
Predicted Molecular Weight	Predicted: 60 kDa Observed: 55 kDa

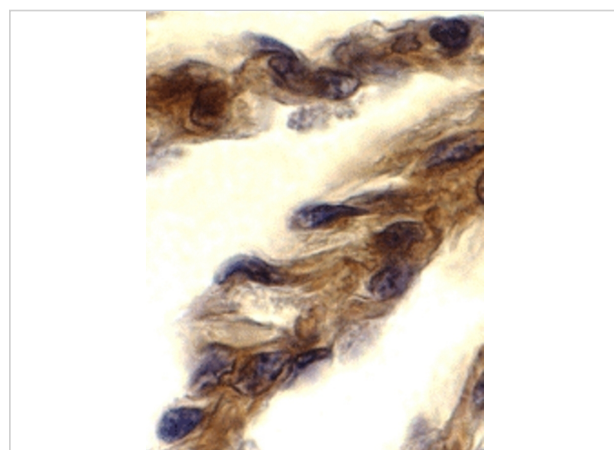
Properties

Purification	TRIF Antibody is Ion exchange chromatography purified.
Clonality	Polyclonal
Isotype	IgG
Physical State	Liquid
Buffer	TRIF Antibody is supplied in PBS containing 0.02% sodium azide.
Concentration	1 mg/mL
Storage Conditions	TRIF antibody can be stored at 4°C for three months and -20°C, stable for up to one year. As with all antibodies care should be taken to avoid repeated freeze thaw cycles. Antibodies should not be exposed to prolonged high temperatures.



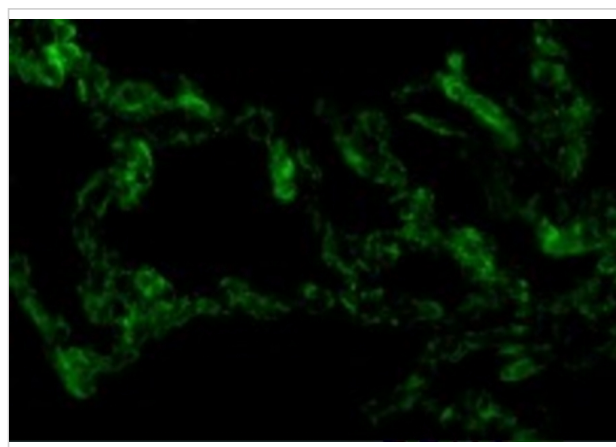
TRIF Antibody 1

Western blot analysis of TRIF in human lung lysate with TRIF antibody at (A) 1 and (B) 2 $\mu\text{g/mL}$.



TRIF Antibody 2

Immunohistochemistry of TRIF in human lung tissue with TRIF antibody at 10 $\mu\text{g/mL}$.



TRIF Antibody 3

Immunofluorescence of TRIF in Human Lung cells with TRIF antibody at 10 $\mu\text{g/mL}$.

Disclaimer

Disclaimer

Optimal dilutions/concentrations should be determined by the end user. The information provided is a guideline for product use. This product is for research use only.

For research use only. For additional information, visit ProSci's [Terms and Conditions Page](#).