

DISC1 Antibody

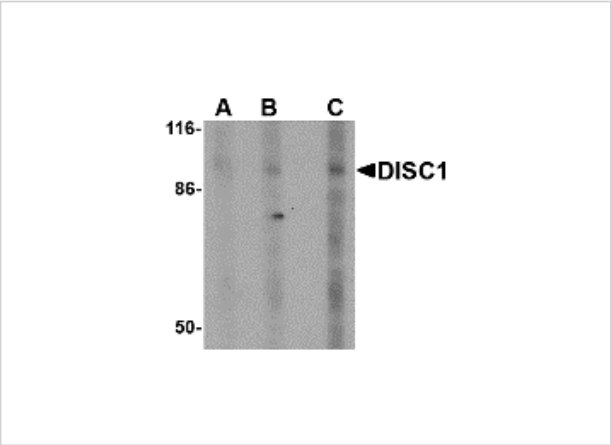
CATALOG NUMBER: 4295

Specifications

Host Species	Rabbit
Species Reactivity	Human, Mouse
Homology	Predicted species reactivity based on immunogen sequence: Rat: (88%)
Immunogen	DISC1 antibody was raised against an 18 amino acid synthetic peptide from near the center of human DISC1. The immunogen is located within amino acids 350 - 400 of DISC1.
Conjugate	Unconjugated
Tested Applications	ELISA, ICC, IF, WB
User Note	Optimal dilutions for each application to be determined by the researcher.
Specificity	At least four isoforms of DISC1 are known to exist; this antibody will detect the three longest isoforms.
Predicted Molecular Weight	Predicted: 72, 92, 94 kDa Observed: 94 kDa

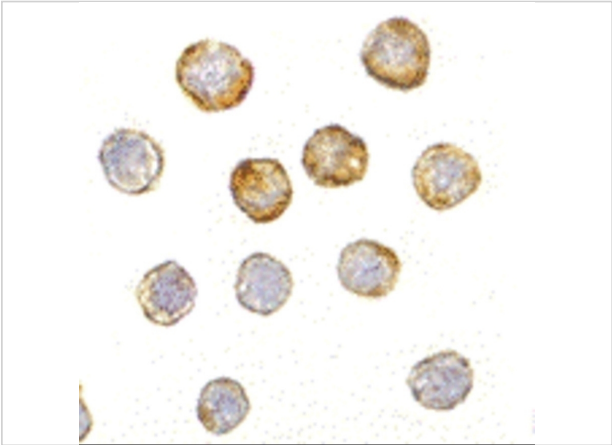
Properties

Purification	DISC1 Antibody is affinity chromatography purified via peptide column.
Clonality	Polyclonal
Isotype	IgG
Physical State	Liquid
Buffer	DISC1 Antibody is supplied in PBS containing 0.02% sodium azide.
Concentration	1 mg/mL
Storage Conditions	DISC1 antibody can be stored at 4°C for three months and -20°C, stable for up to one year. As with all antibodies care should be taken to avoid repeated freeze thaw cycles. Antibodies should not be exposed to prolonged high temperatures.



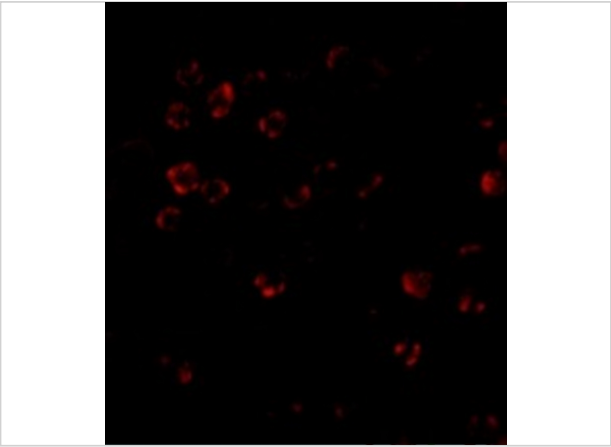
DISC1 Antibody 1

Western blot analysis of DISC1 in SK-N-SH cell lysate with DISC1 antibody at (A) 0.5, (B) 1 and (C) 2 $\mu\text{g/mL}$.



DISC1 Antibody 2

Immunocytochemistry of DISC1 in HeLa cells with DISC1 antibody at 5 $\mu\text{g/mL}$.



DISC1 Antibody 3

Immunofluorescence of DISC1 in HeLa cells with DISC1 antibody at 20 $\mu\text{g/mL}$.

Disclaimer

Disclaimer	Optimal dilutions/concentrations should be determined by the end user. The information provided is a guideline for product use. This product is for research use only.
------------	--

For research use only. For additional information, visit ProSci's [Terms and Conditions Page](#).