

TDP43 Antibody

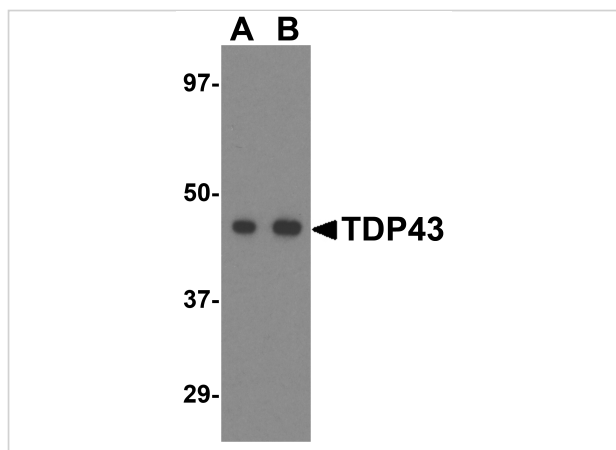
CATALOG NUMBER: 4285

Specifications

| | |
|----------------------------|-----------------------------------------------------------------------------------------------------------------------------------------------------------------------------|
| Host Species | Rabbit |
| Species Reactivity | Human, Mouse, Rat |
| Homology | Predicted species reactivity based on immunogen sequence: Chicken: (94%) |
| Immunogen | TDP43 antibody was raised against a 18 amino acid synthetic peptide from near the center of human TDP43. The immunogen is located within amino acids 160 - 210 of TDP43. |
| Conjugate | Unconjugated |
| Tested Applications | ELISA, ICC, IF, WB |
| User Note | Optimal dilutions for each application to be determined by the researcher. |
| Specificity | At least two isoforms are known to exist for this protein; this TDP43 antibody only recognizes the longer of the two isoforms. |
| Predicted Molecular Weight | Predicted: 46 kDa Observed: 46 kDa |

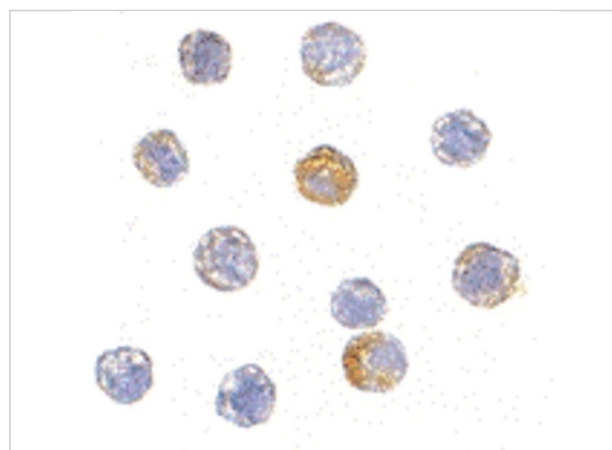
Properties

| | |
|--------------------|-----------------------------------------------------------------------------------------------------------------------------------------------------------------------------------------------------------------------------------------------------|
| Purification | TDP43 Antibody is affinity chromatography purified via peptide column. |
| Clonality | Polyclonal |
| Isotype | IgG |
| Physical State | Liquid |
| Buffer | TDP43 Antibody is supplied in PBS containing 0.02% sodium azide. |
| Concentration | 1 mg/mL |
| Storage Conditions | TDP43 antibody can be stored at 4°C for three months and -20°C, stable for up to one year. As with all antibodies care should be taken to avoid repeated freeze thaw cycles. Antibodies should not be exposed to prolonged high temperatures. |



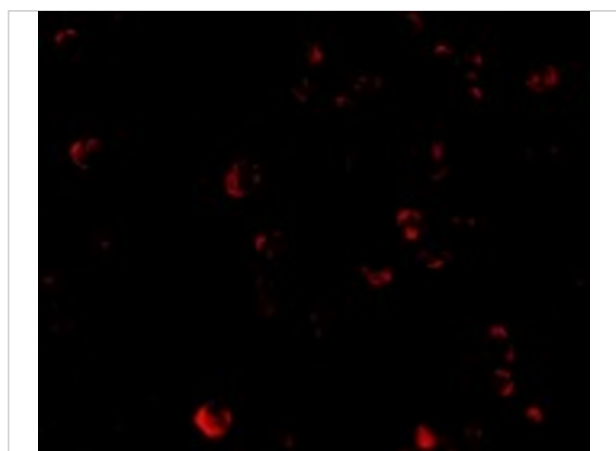
TDP43 Antibody 1

Western blot analysis of TDP43 in L1210 cell lysate with TDP43 antibody at (A) 0.5 and (B) 1 µg/mL.



TDP43 Antibody 2

Immunocytochemistry of TDP43 in HeLa cells with TDP43 antibody at 5 µg/mL.



TDP43 Antibody 3

Immunofluorescence of TDP43 in HeLa cells with TDP43 antibody at 20 µg/mL.

Disclaimer

Disclaimer

Optimal dilutions/concentrations should be determined by the end user. The information provided is a guideline for product use. This product is for research use only.

For research use only. For additional information, visit ProSci's [Terms and Conditions Page](#).