

ARF-BP1 Antibody

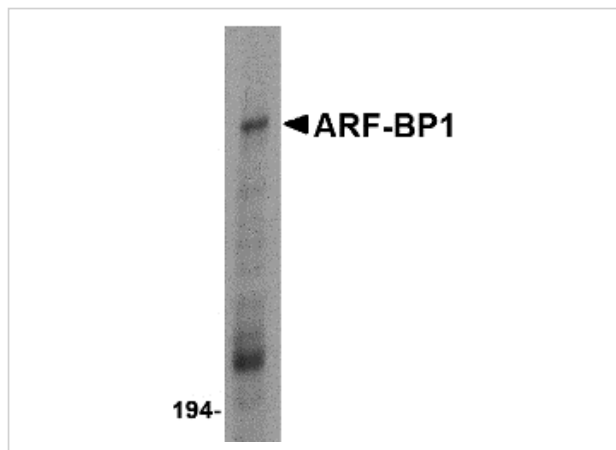
CATALOG NUMBER: 4213

Specifications

Host Species	Rabbit
Species Reactivity	Human, Mouse, Rat
Immunogen	ARF-BP1 antibody was raised against a 19 amino acid synthetic peptide from near the carboxy terminus of human ARF-BP1. The immunogen is located within amino acids 4250 - 4300 of ARF-BP1.
Conjugate	Unconjugated
Tested Applications	ELISA, ICC, IF, WB
User Note	Optimal dilutions for each application to be determined by the researcher.

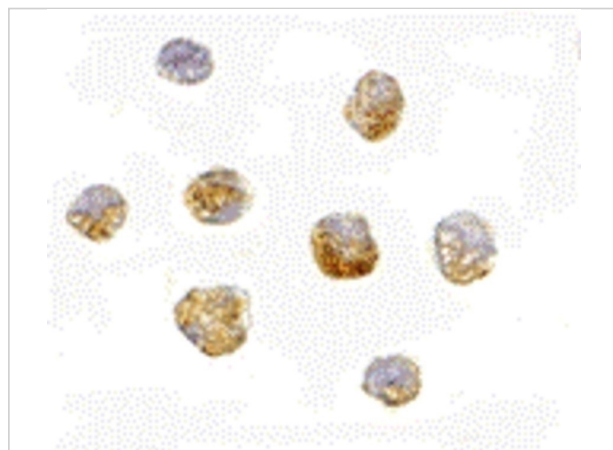
Properties

Purification	ARF-BP1 Antibody is affinity chromatography purified via peptide column.
Clonality	Polyclonal
Isotype	IgG
Physical State	Liquid
Buffer	ARF-BP1 Antibody is supplied in PBS containing 0.02% sodium azide.
Concentration	1 mg/mL
Storage Conditions	ARF-BP1 antibody can be stored at 4°C up to one year. Antibodies should not be exposed to prolonged high temperatures.



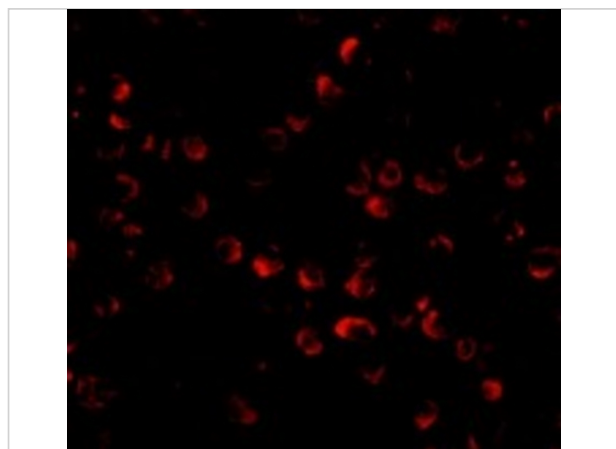
ARF-BP1 Antibody 1

Western blot analysis of ARF-BP1 in Daudi cell lysate with ARF-BP1 antibody at 1 µg/mL.



ARF-BP1 Antibody 2

Immunocytochemistry of ARF-BP1 in Daudi cells with ARF-BP1 antibody at 5 µg/mL.



ARF-BP1 Antibody 3

Immunofluorescence of ARF-BP1 in Daudi cells with ARF-BP1 antibody at 20 µg/mL.

Disclaimer

Disclaimer

Optimal dilutions/concentrations should be determined by the end user. The information provided is a guideline for product use. This product is for research use only.

For research use only. For additional information, visit ProSci's [Terms and Conditions Page](#).