

PHAP I Antibody

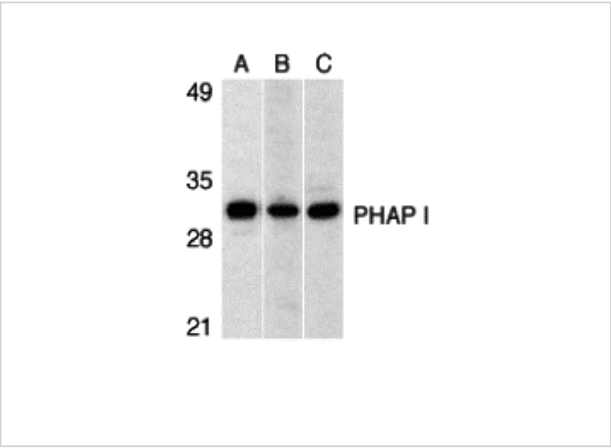
CATALOG NUMBER: 3151

Specifications

Host Species	Rabbit
Species Reactivity	Human, Mouse, Rat
Homology	Predicted species reactivity based on immunogen sequence: Bovine: (85%)
Immunogen	Anti-PHAP I antibody (3151) was raised against a peptide corresponding to 14 amino acids near the carboxy terminus of human PHAP I . The immunogen is located within the last 50 amino acids of PHAP I.
Conjugate	Unconjugated
Tested Applications	ELISA, IF, IHC-P, WB
User Note	Optimal dilutions for each application to be determined by the researcher.
Specificity	This polyclonal antibody has no cross-reaction to PHAP I2a and PHAP III.
Predicted Molecular Weight	Predicted: 29kD Observed: 29 kD

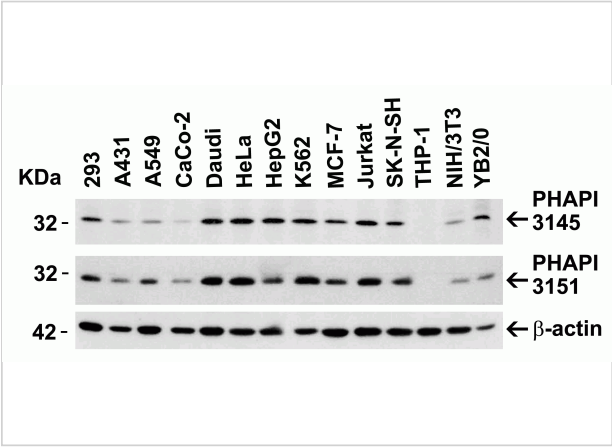
Properties

Purification	PHAP I Antibody is affinity chromatography purified via peptide column.
Clonality	Polyclonal
Isotype	IgG
Physical State	Liquid
Buffer	PHAP I Antibody is supplied in PBS containing 0.02% sodium azide.
Concentration	1 mg/mL
Storage Conditions	PHAP I antibody can be stored at 4°C up to one year. Antibodies should not be exposed to prolonged high temperatures.



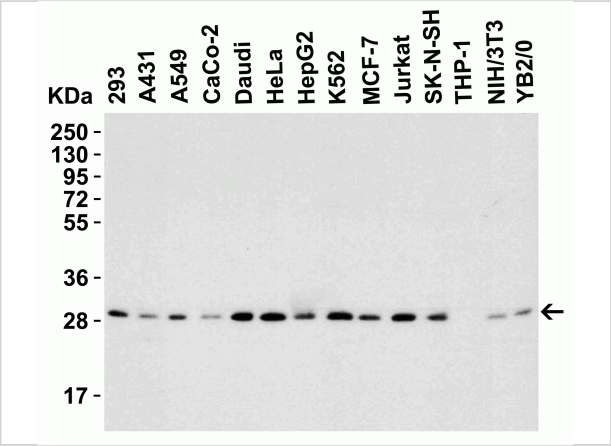
PHAP I Antibody 1

Figure 1 Western Blot Validation in (A) Human Raji Cells , (B) Mouse testis tissue lysate and (C) Rat testis tissue lysate
 Loading: 15 µg of lysates per lane.Antibodies: PHAP I ...



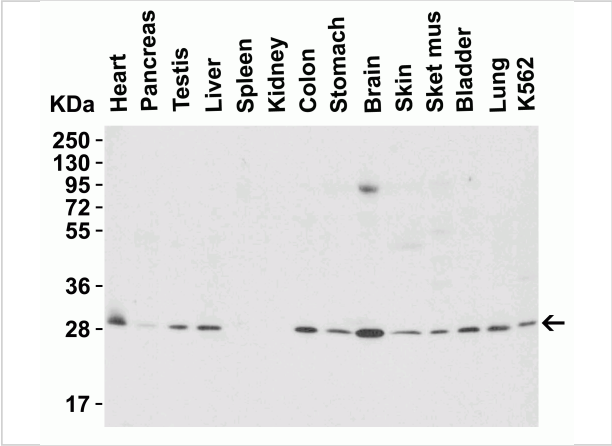
PHAP I Antibody 2

Figure 2 Independent Antibody Validation (IAV) via Protein Expression Profile in Cell Lines
 Loading: 15 µg of lysates per lane.Antibodies: PHAP I 3145 (2 µg/mL), PHAP I 3151 (...)



PHAP I Antibody 3

Figure 3 Western Blot Validation in Human, Mouse and Rat Cell Lines
 Loading: 15 µg of lysates per lane.Antibodies: PHAP I 3151 (1 µg/mL), 1h incubation at RT in 5% NFDm/TBST.Se...



PHAP I Antibody 4

Figure 4 Western Blot Validation in Mouse Tissues
 Loading: 15 µg of lysates per lane.Antibodies: PHAP I 3151 (1 µg/mL), 1h incubation at RT in 5% NFDm/TBST.Secondary: Goat anti...

Disclaimer

Disclaimer

Optimal dilutions/concentrations should be determined by the end user. The information provided is a guideline for product use. This product is for research use only.

For research use only. For additional information, visit ProSci's [Terms and Conditions Page](#).