

ORAI3 Antibody

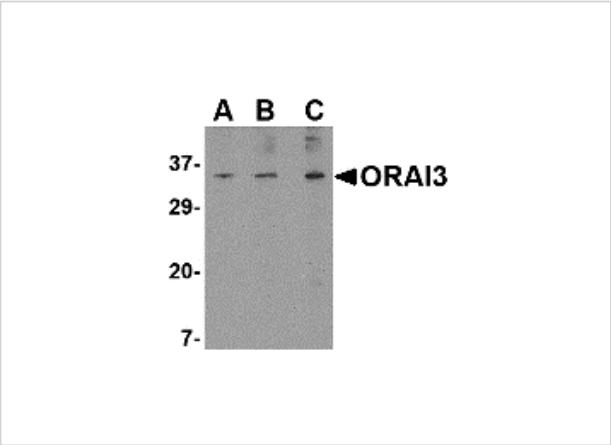
CATALOG NUMBER: 4117

Specifications

Host Species	Rabbit
Species Reactivity	Human, Mouse, Rat
Immunogen	ORAI3 antibody was raised against a 15 amino acid synthetic peptide from near the amino terminus of human ORAI3. The immunogen is located within the first 50 amino acids of ORAI3.
Conjugate	Unconjugated
Tested Applications	ELISA, ICC, IHC-P, WB
User Note	Optimal dilutions for each application to be determined by the researcher.
Specificity	This antibody is predicted to have no cross-reactivity to ORAI1 or ORAI2.

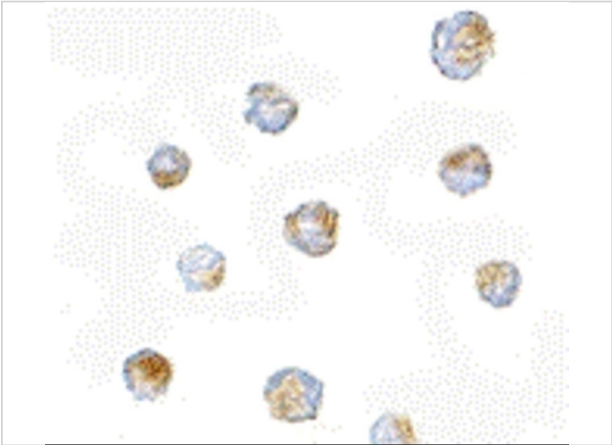
Properties

Purification	ORAI3 Antibody is affinity chromatography purified via peptide column.
Clonality	Polyclonal
Isotype	IgG
Physical State	Liquid
Buffer	ORAI3 Antibody is supplied in PBS containing 0.02% sodium azide.
Concentration	1 mg/mL
Storage Conditions	ORAI3 antibody can be stored at 4°C for three months and -20°C, stable for up to one year. As with all antibodies care should be taken to avoid repeated freeze thaw cycles. Antibodies should not be exposed to prolonged high temperatures.



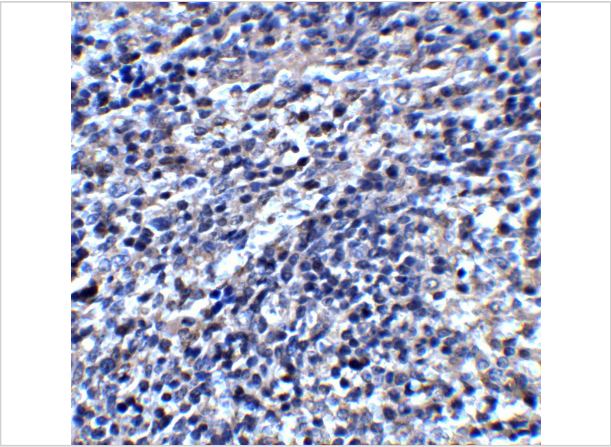
ORAI3 Antibody 1

Western blot analysis of ORAI3 in A20 cell lysate with ORAI3 antibody at (A) 1, (B) 2 and (C) 4 µg/mL.



ORAI3 Antibody 2

Immunocytochemistry of ORAI3 in A20 cells with ORAI3 antibody at 10 µg/mL.



ORAI3 Antibody 3

Immunohistochemistry of ORAI3 in mouse spleen tissue with ORAI3 antibody at 2 µg/mL.

Disclaimer

Disclaimer	Optimal dilutions/concentrations should be determined by the end user. The information provided is a guideline for product use. This product is for research use only.
-------------------	--

For research use only. For additional information, visit ProSci's [Terms and Conditions Page](#).