

Neurotrypsin Antibody

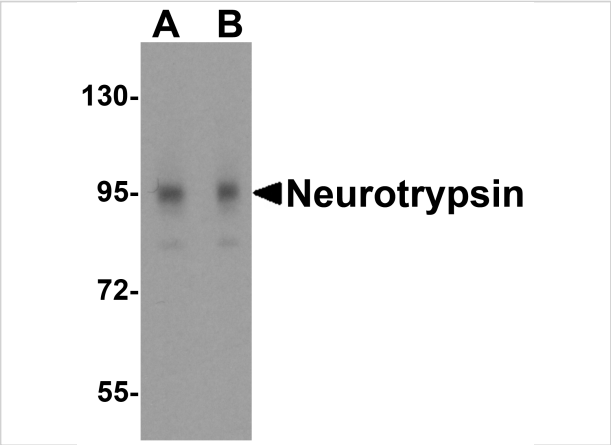
CATALOG NUMBER: 4105

Specifications

Host Species	Rabbit
Species Reactivity	Human, Mouse, Rat
Immunogen	Neurotrypsin antibody was raised against a 23 amino acid synthetic peptide from near the amino terminus of human neurotrypsin. The immunogen is located within amino acids 110 - 160 of Neurotrypsin.
Conjugate	Unconjugated
Tested Applications	ELISA, IF, IHC-P, WB
User Note	Optimal dilutions for each application to be determined by the researcher.
Predicted Molecular Weight	Predicted: 96 kDa Observed: 96 kDa

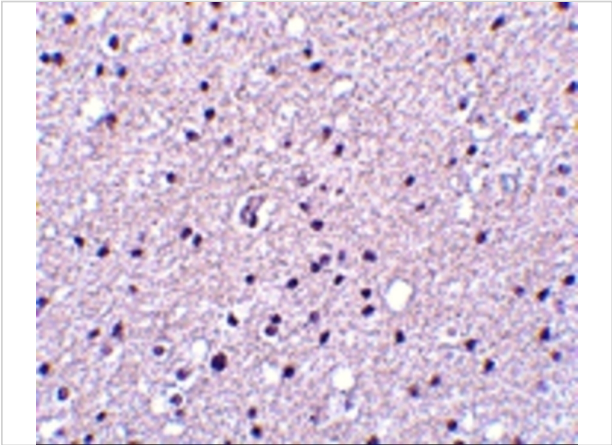
Properties

Purification	Neurotrypsin Antibody is affinity chromatography purified via peptide column.
Clonality	Polyclonal
Isotype	IgG
Physical State	Liquid
Buffer	Neurotrypsin Antibody is supplied in PBS containing 0.02% sodium azide.
Concentration	1 mg/mL
Storage Conditions	Neurotrypsin antibody can be stored at 4°C for three months and -20°C, stable for up to one year. As with all antibodies care should be taken to avoid repeated freeze thaw cycles. Antibodies should not be exposed to prolonged high temperatures.



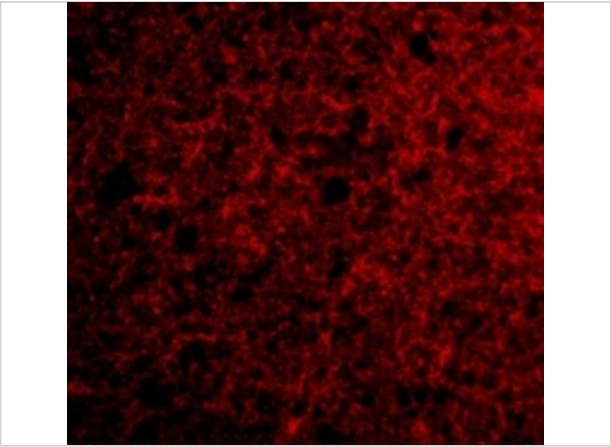
Neurotrypsin Antibody 1

Western blot analysis of neurotrypsin in 3T3 cell lysate with neurotrypsin antibody at (A) 0.25 and (B) 0.5 $\mu\text{g/mL}$.



Neurotrypsin Antibody 2

Immunohistochemistry of Neurotrypsin in human brain tissue with Neurotrypsin antibody at 2.5 $\mu\text{g/mL}$.



Neurotrypsin Antibody 3

Immunofluorescence of Neurotrypsin in Human Brain cells with Neurotrypsin antibody at 20 $\mu\text{g/mL}$.

Disclaimer

Disclaimer	Optimal dilutions/concentrations should be determined by the end user. The information provided is a guideline for product use. This product is for research use only.
------------	--

For research use only. For additional information, visit ProSci's [Terms and Conditions Page](#).