

Neuritin Antibody

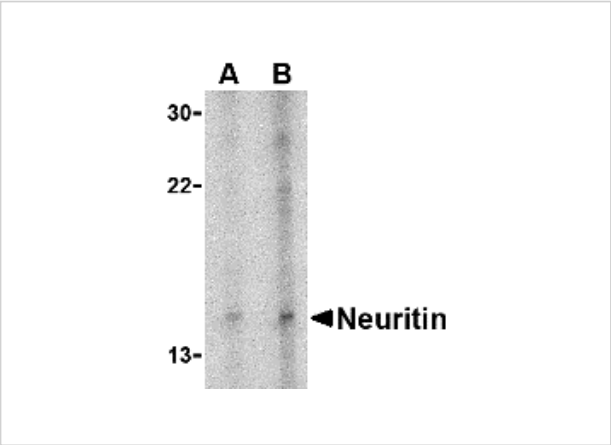
CATALOG NUMBER: 4101

Specifications

Host Species	Rabbit
Species Reactivity	Human, Mouse
Homology	Predicted species reactivity based on immunogen sequence: Bovine: (100%), Rat: (100%)
Immunogen	Neuritin antibody was raised against a 20 amino acid synthetic peptide from near the center of human neuritin. The immunogen is located within amino acids 70 - 120 of Neuritin.
Conjugate	Unconjugated
Tested Applications	ELISA, IF, IHC-P, WB
User Note	Optimal dilutions for each application to be determined by the researcher.
Predicted Molecular Weight	Predicted: 16 kDa Observed: 15 kDa

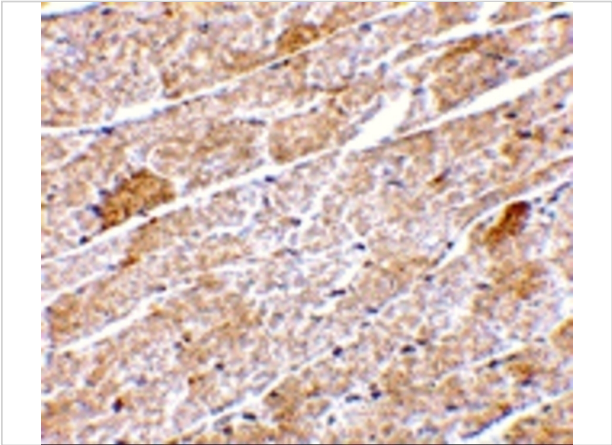
Properties

Purification	Neuritin Antibody is affinity chromatography purified via peptide column.
Clonality	Polyclonal
Isotype	IgG
Physical State	Liquid
Buffer	Neuritin Antibody is supplied in PBS containing 0.02% sodium azide.
Concentration	1 mg/mL
Storage Conditions	Neuritin antibody can be stored at 4°C for three months and -20°C, stable for up to one year. As with all antibodies care should be taken to avoid repeated freeze thaw cycles. Antibodies should not be exposed to prolonged high temperatures.



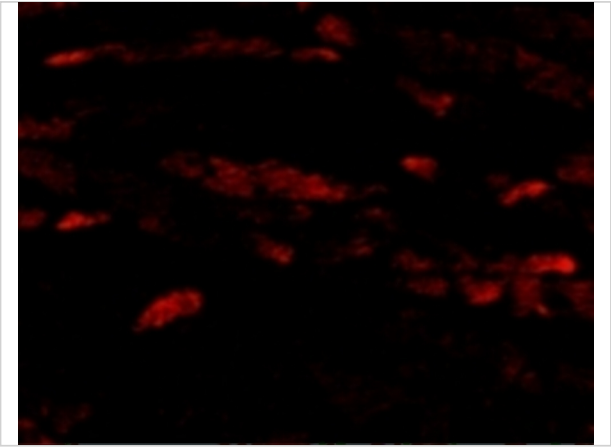
Neuritin Antibody 1

Western blot analysis of neuritin in Daudi cell lysate with neuritin antibody at (A) 5 and (B) 10 µg/mL.



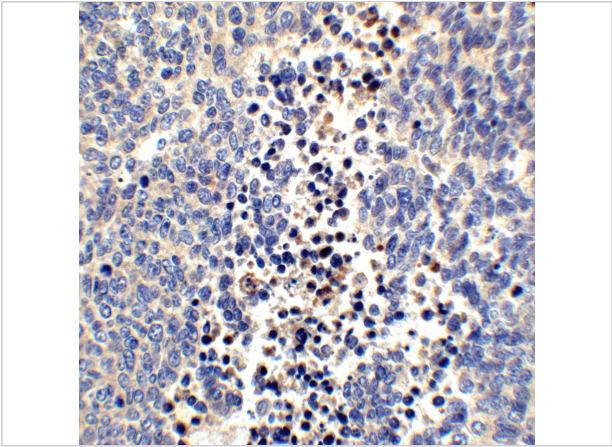
Neuritin Antibody 2

Immunohistochemistry of Neuritin in mouse heart tissue with Neuritin antibody at 5 µg/mL.



Neuritin Antibody 3

Immunofluorescence of Neuritin in Mouse Heart cells with Neuritin antibody at 20 µg/mL.



Neuritin Antibody 4

Immunohistochemistry of Neuritin in human brain tissue with Neuritin antibody at 2.5 µg/mL.

Disclaimer

Disclaimer	Optimal dilutions/concentrations should be determined by the end user. The information provided is a guideline for product use. This product is for research use only.
------------	--

For research use only. For additional information, visit ProSci's [Terms and Conditions Page](#).